



**Oregon Department of Fish and Wildlife
Fish Habitat Distribution Data Update Protocol**

September, 2005

Table of Contents

Introduction	3
Overarching Guidelines	4
Data Provider / Distribution Data Categories	5
Guidelines for Changing Distribution Data	6
Update Procedures for Additions and Deletions	10
Assigning / Changing Related Data	12
Glossary	13
Appendix A. Dispute Resolution Tree	15
Appendix B. Location Data Requirements	16
Appendix C. Species / Generation Length for Current Distribution	17
Appendix D. Update Flow Chart	18
Appendix E. Recommended Steps to Formulate a Concurrence of Professional Opinion	19
Appendix F. Concurrence of Professional Opinion Watershed / Agency List	20

Introduction

This document establishes a set of procedures to guide the update, modification, and further development of ODFW's Fish Habitat Distribution data (herein known as distribution data). These data have been developed by ODFW since 1994 and represent a compilation of fieldwork and professional knowledge. As the body of fish distribution knowledge grows, it is essential to keep these data current for informing resource management decisions.

The data reside in electronic form, but for ease of use by agency biologists and the public, the data can be converted into digital or hardcopy map format. The primary focus has been on developing anadromous salmonid distribution data, however, significant efforts have also been made toward the development of resident species distribution data. Due to the range of confidence in the data (from documented observations to professional opinion), the mix of data contributors (professional to non-professional) and the complexity of the information, a clear set of update protocols are essential to maintain and improve the comprehensiveness, consistency and quality of distribution data. These protocols and procedures can also be applied to other types of data that require continued maintenance.

Distribution Data Update Protocol

(All key terms and definitions are found in the *Glossary* section)

Overarching Guidelines

Modifications to the database will be evaluated based on 1) the completeness of the existing dataset, 2) the strength of supporting evidence or agreement, and 3) the agency/entity providing the data.

Category I – Comprehensive Datasets

Updates

Additions and deletions to distribution datasets that are considered to be comprehensive will require proof or concurrence of professional opinion¹. (Datasets are considered comprehensive when all potential habitat, for a particular species and run, has been reviewed by natural resource agency biologists and others who have knowledge of their current range. Datasets that are comprehensive only at the species management unit level (e.g. closed basins redband) will have only those geographic areas subject to Category I guidelines.) The information required for changing Category I data is explained in greater detail under the "Guidelines for Changing Distribution Data" section of this document. As of September, 2004, the species that fall into Category I include: coho, chinook (Spring and Fall runs), chum, all steelhead, redband (closed basins only), bull trout, Oregon chub, Lahontan and Westslope cutthroat, and all sturgeon.

Category II – Non-Comprehensive Datasets

Updates

In order to develop baseline distribution data for species that are not comprehensively mapped, changes to this category of data allow for the use of individual professional opinion. To qualify as professional opinion, individuals proposing changes must be employed in the capacity of a professional biologist by a recognized natural resource agency or tribal entity (see "Data Provider / Distribution Data Categories" section below). Professional opinion may be used to update the following species distributions until the information collected is sufficient to meet Category I parameters: coastal cutthroat, all non-closed basin resident *O. mykiss*, all non-native game species, and all native non-game species not listed above.

Historic Distribution

Professional opinion will also be allowed when developing historic distribution for all species until further notice.

¹ Concurrence of Professional Opinion: professional opinion will be sufficient to make changes to Category I data, but the opinion must be formulated by the biologists within whose jurisdiction the change has been proposed. This process will enable ODFW to accept input from other natural resource agencies and professional biologists as part of the further development of the distribution data. A list of potential jurisdictions in each 5th field watershed is provided in Appendix F of this document to clarify who should be considered when formulating the opinion. In areas where only one agency has jurisdiction, and adequate justification can be provided, the opinion of a single ODFW biologist will be accepted for making changes to Category I data.

Data Provider / Distribution Data Categories (Who can change what?)

For the purpose of proposing changes to the fish distribution data, data providers are divided into two separate groups:

- 1) State and Federal Natural Resource Agency, and Tribal Biologists (ODFW, ODF, USFS, BLM, USFWS, Tribes). The data provider must be employed by one of these entities at the time the observation was made.
- 2) Other Biologists and Non-biologists (e.g. university researchers, SWCD's, utilities, private corporation biologists, non-biologists such as ODFW EBA's or USFS / BLM equivalent positions, watershed council coordinators, and anyone else who does not fall into Group 1).

Observations made by Group 1 can be used to directly change Category I and II datasets. Observations made by Group 2 will require "sign-off" by an ODFW biologist in order to modify either Category I or II distribution datasets.

All professional opinion used to change the distribution data must be that of natural resource agency biologists (Group1).

The following table lists the data provider categories, the distribution data categories and the basic requirement for making a change under each combination.

Data Provider Group	Category I change	Category II change
1	Observation or Concurrence of Professional Opinion	Individual Professional Opinion with ODFW consultation
2	Requires a Group 1 data provider to lead a Concurrence of Opinion process	Requires ODFW "sign-off"

More specifics regarding the criteria and procedures for implementing changes can be found in subsequent sections of this document.

Guidelines for Changing Distribution Data

Adding to the Distribution:

Category I Criteria:

The existence of suitable habitat, which is the basis for establishing fish distribution, can be documented by:

- evidence of reproductive activity for anadromous species and/or
- the presence of a resident species at any life-stage within the area of interest,
- through concurrence of professional opinion.

Observation

Evidence of sustained reproductive activity provides the highest degree of confidence that habitat is suitable for a given species. Observance of an anadromous species, upstream of defined spawning and/or rearing areas, will also be accepted, but will be categorized as Use-type "unknown" if the activity of the fish is not specified. The following types of observations provide the clearest and most sufficient evidence:

For anadromous species:

- Adults in the act of spawning or guarding redds.
- Presence of juveniles (more than a single individual) of the same species.
- Presence of redds, where it is clear which species produced the redd (i.e. adults observed in the area, or no other species would be present at the time). This information must be clearly described with the data change submission. (See "Update Procedures for Additions and Deletions" section below.)

For resident species:

- Any observed life-stage.

Required content

1. Name of the body of water² according to the USGS Geographic Names Information System (found on 1:24,000 scale quad maps).
2. Date of the observation.
3. Species.
4. Run / life history stage observed – (for juvenile *O. mykiss*, unless certain of the run, report as "unknown *O. mykiss*." These observations will not be mapped on species/run-specific data layers if multiple runs exist, but would be available for non run-specific mapping).
5. Number and type or unit observed (redds, total live fish, etc.).
6. One of the following location descriptions (in priority order):
 - a. Specific location of the fish or redd(s) observed.

² Unnamed water bodies should be identified as "Unnamed tributary to <the name of the tributary into which the unnamed stream flows>". Unnamed lakes and ponds should be identified as, "Unnamed lake/pond <X feet <direction> from <the nearest named feature on the quad map>>

- i. The format must be in either Latitude/Longitude coordinates (geographic, decimal degree (geo-dd) coordinates), or
 - ii. Stream identifier (RouteID / LLID) and river mile measure to the nearest 1000th of a mile (see Appendix B), or
 - iii. If the first two options are not available, then UTM coordinates with zone and datum specified will be accepted.
 - b. Location of the survey, including the extent to which fish were observed throughout the surveyed area (either "throughout the reach" or "within the 1st, 2nd, 3rd, and/or 4th quarter of the surveyed area"). The beginning and ending locations of the survey must be collected in the following format:
 - i. The format must be in either Latitude/Longitude coordinates (geographic, decimal degree (geo-dd) coordinates), or
 - ii. Stream identifier (RouteID / LLID) and river mile measure to the nearest 1000th of a mile (see Appendix B), or
 - iii. If the first two options are not available, then UTM coordinates with zone and datum specified will be accepted.
7. The name, title, organization, and contact information of the person submitting the observation record. If the information is derived from an existing document then the title, author(s), publisher, year published and page number(s) must also be provided, otherwise the observation is referenced to the person submitting the record.

Optional, but encouraged content

- 8. Name of person or people who verified or made the observation.
- 9. Activity or habitat use of the fish: how were the fish using the habitat? (spawning, rearing, guarding redd, etc.). Refer to existing definitions to determine the appropriate use-type of the habitat that is added. If the use or activity is not designated, the observation will document "presence" only, rather than documenting the use-type, and will not meet the highest and most sufficient threshold of evidence.

Acceptable Observation Records

Observations must be recorded in a manner that can be referenced and cited. , Examples include recording data on a project data collection form, within a project database or spreadsheet used to capture routine data collections, or in a published, or recognized agency / entity project report.

Some examples of properly recorded observations:

- a. ODFW Incidental Fish Observation form
- b. established project data collection form
- c. established project database or spreadsheet used to capture routine data collections
- d. published or recognized agency/entity project report

Observations that have not been properly recorded, such as emails, memos, notes, etc., will not qualify for making changes.

Conflicting documented evidence will be dealt with through the dispute resolution process (Appendix A).

Observation/Survey types that typically do and do not provide suitable information

Suitable:

Spawning count surveys
Juvenile snorkel surveys
Redd count surveys
Stream habitat surveys ***
Fish presence/absence surveys ***
Tagging efforts ***
Smolt trap/weir ***
REMAP/EMAP surveys***
Estuary surveys***

Not suitable:

Existing distribution maps
Hatchery release data
Creel surveys
Voluntary angler reporting data
Water quality surveys

*** Dependent upon the quality and completeness of the information provided.

Concurrence of Professional Opinion (CPO)

The purpose of developing distribution data via a collaborative approach is to prevent the creation of conflicting data, as well as to develop confidence in the final product. If a biologist proposes a change to Category I data based solely on opinion, (s)he is responsible for coordinating with the representative biologists from other natural resource agencies to formulate a concurrence of professional opinion. The list of potential jurisdictions by 5th field watershed (Appendix F) should be considered when formulating a CPO. The initiating biologist should consult with those on the list during this process. Ultimately, we will defer to the judgment of the ODFW or other natural resource agency biologist regarding who should be included in the formulation of a CPO. However, the ODFW biologist must be included in the decision-making process, and there must be no dissenting opinions. Any exclusion of jurisdictions on the list provided must be justified on the change request form. Where ODFW has the only natural resource agency presence, ODFW's opinion will be sufficient to formulate a CPO. The process to garner a concurrence of professional opinion is described in Appendix E.

Category II Criteria:

In cases where documented observations are not required to make a change to the distribution data (see "Overarching Guidelines" section on page 4), suitable habitat may be determined by the professional opinion of an individual natural resource agency biologist, in consultation with an ODFW biologist. Supporting documentation, where available, should also be submitted in order to develop distribution data that is based on the highest possible level of confidence.

Specialized Criteria:

For *O. mykiss* observations not significantly removed from existing steelhead distribution, where the life history is unknown (e.g. juvenile observation and no known barrier between the observation location and existing steelhead distribution), distribution would be recorded as steelhead. The metadata that describe the steelhead distribution data will acknowledge that many eastside streams containing steelhead also contain non-anadromous *O. mykiss*, and certain westside streams do also. On the other hand, if the area is known to be inaccessible to anadromy, the observation will be recorded as Rainbow / Redband and an acknowledgement of the potential contribution to an anadromous population will be made in the metadata.

Deleting Existing Distribution:

Category I Criteria:

Existing distribution can be removed or reduced based on a number of factors:

- A habitat survey that indicates a lack of suitable habitat and a CPO that suitable habitat likely NEVER existed in that location. A protocol for designating habitat as "unsuitable" needs to be agreed upon by the agencies conducting these surveys in order for the surveys to result in deletions to the distribution data. The rationale for stating that habitat has never been suitable must be clearly explained on the change request form.
- Repeated observations/surveys indicating no-use over 5 generations for a given species (see Appendix C) would cause the distribution to be changed to "historic."
- In situations where fish are blocked by a newly created barrier, the distribution would immediately be changed to "historic." Information describing the location and nature of the barrier would be required.
- In situations where fish are blocked by a previously unknown natural, non-transitory barrier, the distribution would immediately be changed to "absent." If the barrier is non-natural or transitory, the distribution above the barrier would be changed to "historic." If the barrier is considered to be transitory (e.g. debris jam), then it must block access for 5 generations (see Appendix C) before the habitat will be mapped as "historic." Information describing the location and nature of the barrier would be required.

Required Documentation for Deleting Existing Distribution:

1. Name of the body of water³ (GNIS standard).
2. Target species (and run, if applicable).
3. A description of the target area using decimal degree (geo-dd) coordinates, UTM coordinates with zone and datum specified, or RouteID (LLID) and river mile measure to the nearest 1000th of a mile.
4. Observation records/Habitat surveys, including the dates over time, describing what was observed. (*Note: a single survey with no fish observed is not grounds for removal, or "historic" or "absent" designation.*)
5. If the recommended deletion is based on a concurrence of professional opinion, the names, respective agencies, and appropriate contact information for all the biologists involved in formulating the opinion are also required.

Category II Criteria:

The biologists who are responsible for a particular waterbody agree that the distribution should be removed based on a concurrence of their professional opinion. However, if the existing distribution is supported by observation information, the deletion criteria for Category I data will apply.

³ Unnamed water bodies should be identified as "Unnamed tributary to <the name of the tributary into which the unnamed stream flows>". Unnamed lakes and ponds should be identified as, "Unnamed lake/pond <X feet <direction> from <the nearest named feature on the quad map>>"

Update Procedures for Additions and Deletions

Steps for Requesting a Change to the Data

The following steps outline the process for requesting a change to the distribution data. This process assumes that either **proof** of fish presence / non-presence has been established OR that the necessary biologists for a particular area have reached a **concurrence of professional opinion** for the addition or removal of distribution data. The process to garner a concurrence of professional opinion is described in greater detail in Appendix E. A flow chart (Appendix D) has been compiled to provide an overview of the steps in the update process.

Step 1. Biologist requests a hardcopy or electronic copy of the Distribution Change Request (DCR) form from the distribution data steward or downloads an electronic version from the NRIMP Web site (<ftp://rainbow.dfw.state.or.us/pub/gis/UpdateProtocol/DistributionDataUpdateForm.dot>). Requesters are encouraged to check the online list of previously requested changes to avoid duplication of effort. *(insert web address here)*

The Distribution Change Request (DCR) Form

The DCR form exists in a "template" format and consequently is provided separately from the Update Protocol document. The form allows for input of coordinate data or stream route/measure information to describe the spatial extent (location) of the requested change(s). If the biologist requesting the change does not have the means to develop this coordinate information via GPS, GIS or other software, NRIMP staff will work with the biologist to develop this capacity.

Step 2. Determine whether the change fits under Category I or Category II, as per the descriptions in the criteria section. Depending upon the update category (see “Overarching Guidelines” section on page 4) and the type of change requested the information required will vary. The requirements for each update category are spelled out on the DCR form.

Step 3. Biologist fills out the DCR form with required information including location coordinates.

Step 4. Biologist e-mails the DCR form to the distribution database manager (currently Jon Bowers – Jon.K.Bowers@state.or.us).

Step 5. Distribution data steward notifies the submitting biologist that the request has been received and that a review is pending. The data manager then evaluates the information provided to determine whether it meets the criteria as spelled out in this Update Protocol document.

Step 6. If the criteria are met then the distribution data manager implements the requested change(s) (depending upon workload and available resources). The changes will be tracked within the database, including: date, old record snap shot, description of change, reason for change.

Step 6a. If the criteria are not met, the distribution data steward will identify the deficiencies of the request and will notify the submitting biologist(s). The biologist(s) will have the choice to

either submit a new/revised DCR form with the required information, or accept that a change will not be made at this time.

Step 7. Distribution data manager then creates a digital map displaying the updated information and provides this back to all contributing biologists for a final review.

Step 8. Biologists either confirm that the requested change was implemented properly, or additional input is provided to refine the change.

Step 9. If additional input is provided, the distribution data manager implements the refinement and repeats steps 6-8.

Step 10. Finally, the distribution data manager updates the distribution information that is available to the public.

Update Timeline

The frequency with which DCR forms are reviewed and changes are made will depend upon staff availability and the funding source(s) paying for the updates. For example, the current StreamNet funding for maintaining distribution data covers changes within the Columbia basin only. For change requests outside of the Columbia basin: we will attempt to implement these on an annual update cycle, but no guarantees can be made at this time. Provided that funding issues are addressed, proposed changes will be accepted at any time and processed as expeditiously as possible.

Recommended Steps to Formulate a Concurrence of Professional Opinion (CPO)

See Appendix E.

Note: Submissions of "bulk" numbers of electronic distribution records must meet the same criteria to result in changes to the distribution database. The procedures for implementing these changes will likely be developed on a case-by-case basis by the distribution data steward.

Assigning / Changing Related Data

Overview

Assigning/changing related data can be done in conjunction with changes to the spatial components of the dataset, or separately using the Data Change Request form. For example, species status can be changed separately from the distribution information for that species. For independent changes to related data, section B-3 on the Data Change Request form must be filled out.

Glossary

Absent: Areas that fish cannot access now, nor were they ever able to access. These areas will only be above a documented barrier, or will have been documented over a period of 5 generations for a given species, where no fish or suitable habitat were observed.

Anadromous: Populations that migrate from salt water to fresh water to spawn.

Category I data: Distribution datasets where targeted development efforts have been made by ODFW. These data development efforts have resulted in comprehensive distribution datasets. Some examples include the 24K Fish Habitat Distribution Mapping Project and the Closed Basin Redband distribution mapping efforts. The species that fall into this category are listed in the “Overarching Guidelines” section of this document.

Category II data: Distribution data for species that have not been comprehensively mapped statewide.

Concurrence of Professional Opinion (CPO): A joint opinion formulated by the natural resource agency and/or tribal biologists within whose jurisdiction a change has been proposed. This process will enable ODFW to accept input from other natural resource agencies and professional biologists as part of the further development of the distribution data.

Documentation: any written information describing the life stage and/or behavior of a given species and run of fish in a specific stream or area based on actual observation.

Fish habitat distribution: Areas of suitable habitat currently believed to be utilized by wild, natural, and/or hatchery fish populations. The term “currently” (as applies to fish runs) = existing in the area outlined within the past five reproductive cycles. The maximum range of one life-cycle by species: coho – 5x3 years, steelhead – 5x7 years, chinook – 5x6 years. See Appendix C. for a complete list.

Hatchery reproduction: Fish propagated in a hatchery and released into the wild.

Historic: ODFW's representation of previous species distribution will be defined as, "Areas of suitable habitat that fish no longer access and will not access in the foreseeable future without human intervention.”

Historic Origin: How the initial population came to exist within the subbasin.

Introduced production: Production resulting from the routine introduction of a species.

Mixed (hatchery and non-hatchery) reproduction: Hatchery, native, and/or Wild/Natural populations that have successfully reproduced in the wild.

Native: indigenous species that were present within the subbasin prior to European settlement.

Native reintroduced: A species native to the basin that has repopulated a specific area or subbasin.

Native reproduction: indigenous species present prior to European settlement successfully reproducing in the wild.

Non-Anadromous Fish: Populations that don't migrate from salt water to fresh water to spawn. This includes resident, adfluvial and fluvial populations.

Non-native introduced: Any species introduced to an area where it did not exist historically.

Non-native reintroduced: original stock within the subbasin went extinct, but non-natives (from outside the basin) were introduced to re-establish stock distribution.

O. mykiss: Juvenile populations that cannot be discerned between steelhead and resident rainbow.

Present Production: Means by which the population is currently sustained.

Proof: Is synonymous with documentation. Documentation is defined as written information describing the observed life stage and/or behavior of a given species and run (if available) of fish in a specific body of water.

Rearing: General time that fish are present for the purposes of feeding and self-preservation.

Resident: Populations that confine their migration within their natural stream or watershed. (includes estuaries for sturgeon)

Spawning: The time in which eggs are being deposited into redds and fertilized.

Wild/Natural reproduction: Native and Wild/Natural populations that have successfully reproduced in the wild.

Use-type Definitions:

Absent: see definition above.

Historic: see definition above.

Migration: is defined as areas where juvenile and/or adult fish pass through as they move between the ocean and spawning and rearing areas. While all migratory corridors provide some rearing opportunities, areas with this designation are distinguished by fish moving through fairly quickly making contributions to juvenile rearing insignificant. These areas are displayed in yellow on the maps.

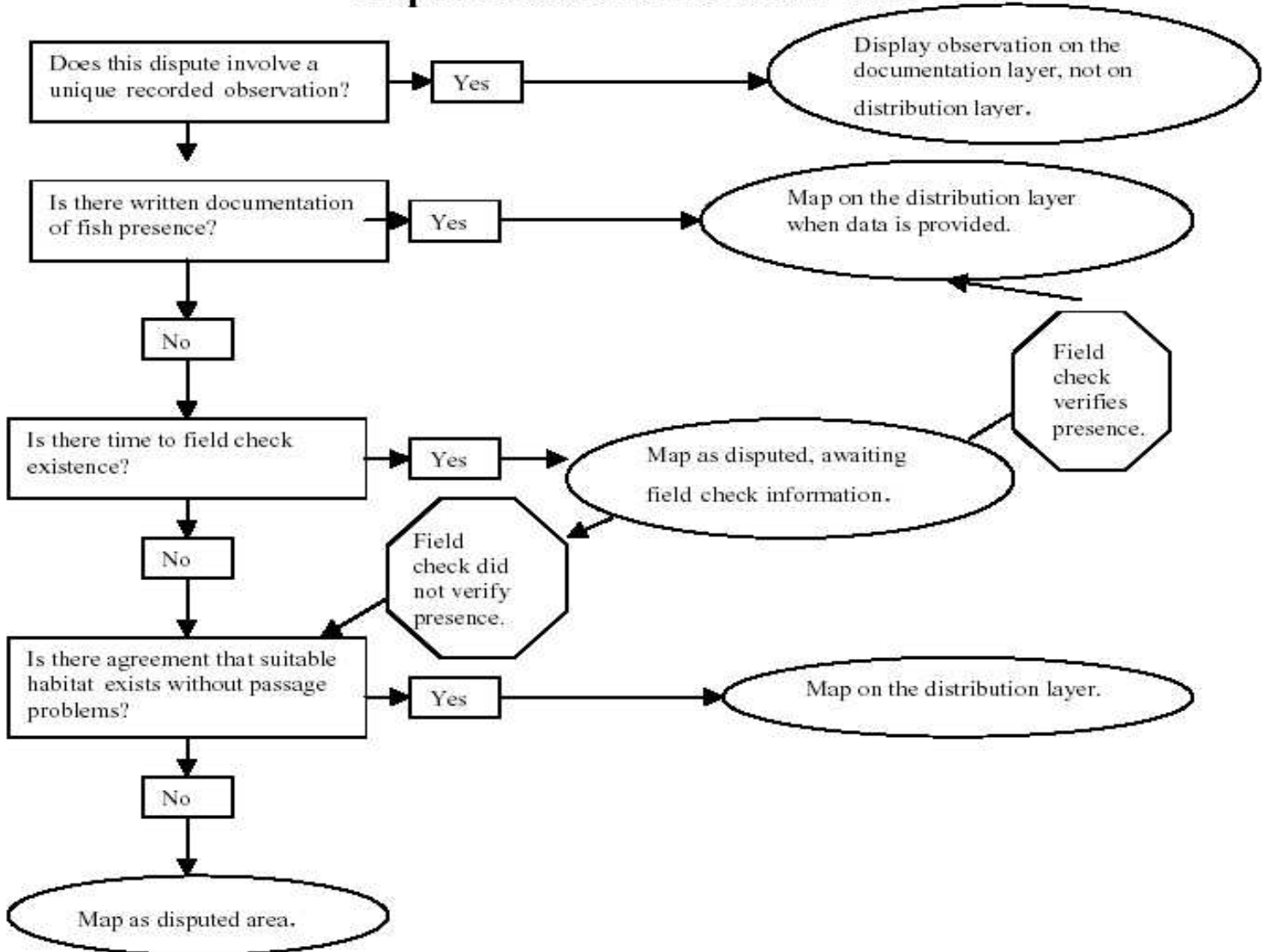
Present: is indicated where a specific use-type cannot be specified.

Rearing and Migration: is defined as areas outside primary spawning habitats where juvenile fish take up residence during some stage of juvenile development and utilize the area for feeding, shelter, and growth. Some migration also occurs as juvenile and adult fish move between the ocean and spawning areas. These areas are displayed in green on the maps.

Spawning and Rearing: is defined as areas where eggs are deposited and fertilized, where gravel emergence occurs, and where at least some juvenile development occurs. These areas are displayed in red on the maps.

Appendix A.

Dispute Resolution Decision Tree



Appendix B. Location Data Requirements

Geographic Decimal Degree (geo-dd) coordinates

This format is a variation of the common latitude/longitude (Degrees - Minutes - Seconds or DMS) format, based on the *geographic* projection. It can be collected directly via a GPS unit, or a lat/long value in DMS format can be converted to geo-dd format. See <http://rainbow.dfw.state.or.us/nrimp/tools/index.htm> for a DMS to geo-dd conversion calculator. Other coordinate formats (e.g. UTM) can be converted to geo-dd using GIS software projection utilities. An example of geo-dd coordinates and their corresponding DMS values follows:

Format	Latitude	Longitude	Datum
Geographic Decimal Degrees (geo-dd)	45.6061	-123.9994	NAD 83
Degrees-Minutes-Seconds (DMS)	45 36 22	-123 59 58	NAD 83

UTM (Universal Transverse Mercator) coordinates

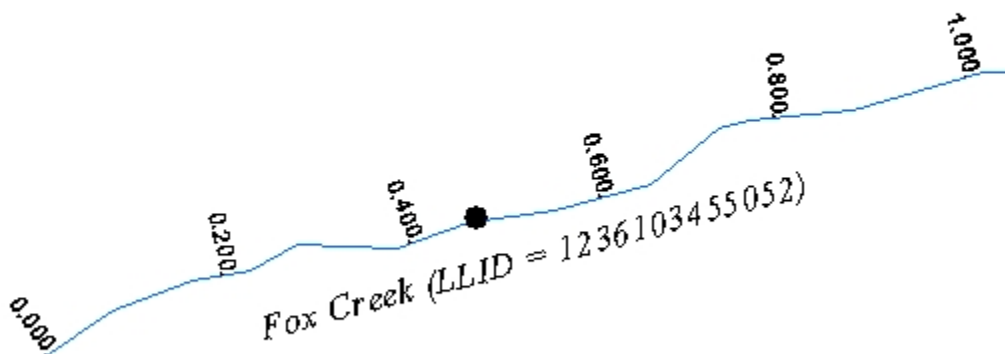
UTM coordinates can be collected directly from a GPS or derived from 7.5' quad maps. Be sure to record the datum and the zone. An example follows:

Format	Easting	Northing	Zone	Datum
UTM	432551	5020695	10	NAD 83

RouteID (LLID) and river mile measure to the nearest 1000th of a mile

The RouteID or LLID is a unique identifier for each stream found within the 1:100,000 scale Pacific Northwest River Reach GIS dataset. Each unique stream within this dataset has a built-in measure system starting from the mouth and extending to the headwaters. The combination of the 13 digit route identifier code and a measure value along the route references a specific location on the ground. Route measures are taken to 3 decimal places or 1/1000th of a mile. For biologists with the capacity to work with GIS data, the river reach dataset is available at: ftp://rainbow.dfw.state.or.us/pub/gis/k100/cover/rivers/str_100k.zip.

The following example shows a point location as LLID = 1236103455052, measure = 0.475.

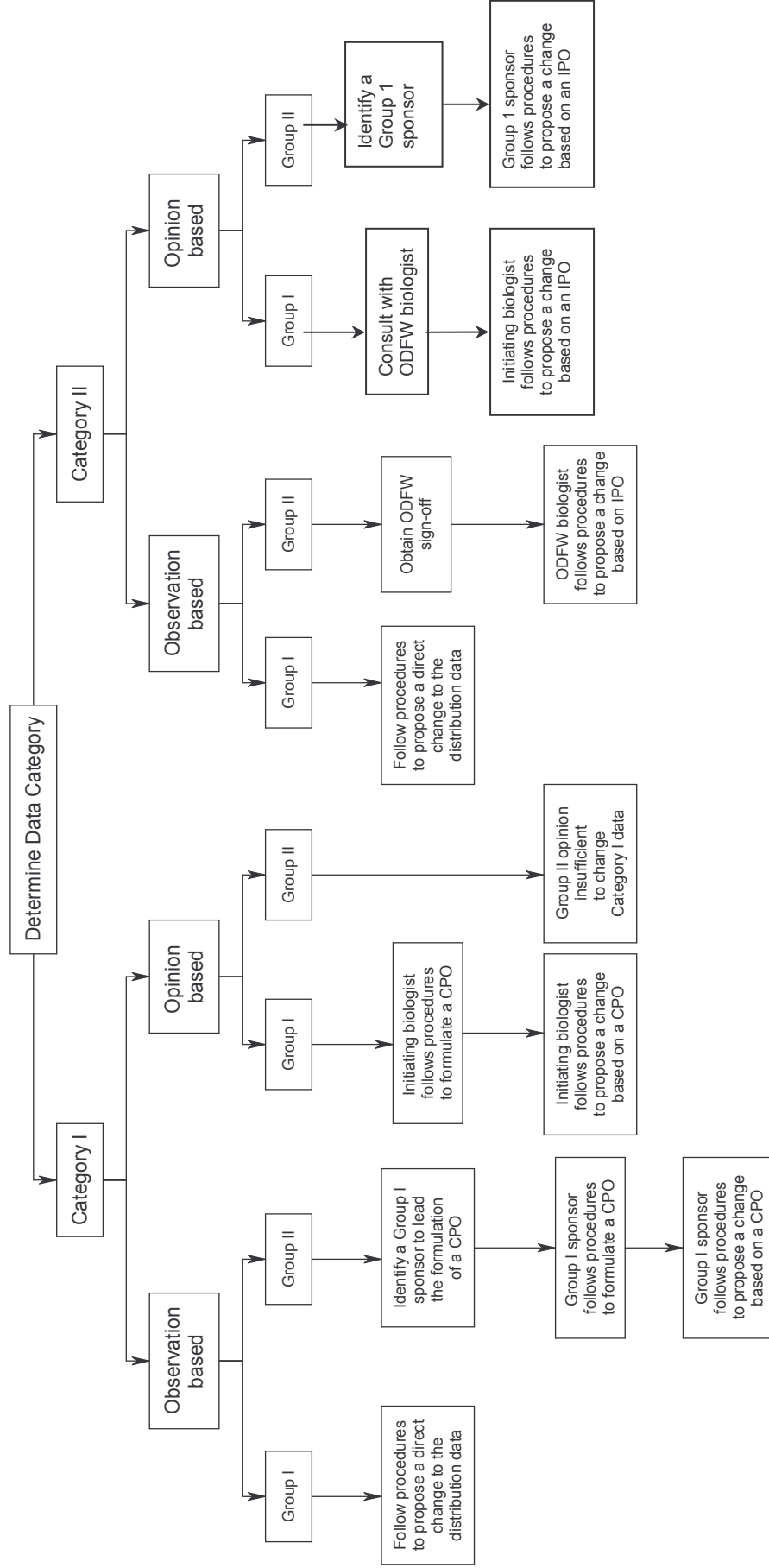


Appendix C. Species / Generation Length for Current Distribution

Species	# Generations	Generation Length (years)	Total Years	Comments
Coho	5	3	15	
Chinook	5	6	30	
Steelhead	5	7	35	
Chum	5	4	20	
Westslope Cutthroat	5	6 (typical)	30	Similar to Eastside rainbow/redband
Lahontan Cutthroat	5	6 (typical)	30	Similar to Eastside rainbow/redband
Coastal Cutthroat	5	6 (typical)	20	The reduction in total years, as compared to eastside species of cutthroat, is based on less variation in water conditions on the Westside resulting in the fish likely being more easily detected on a regular basis (Al Hemmingsen, pers. comm., 7/30/04).
Rainbow / Redband	5	6 (typical)	30	Eastside – wet/dry cycles affect length of absence, thus surveys should occur over a longer period than the Westside in order to prove absence (Al Hemmingsen, pers. comm., 7/30/04).
Bull Trout	5	7 (typical)	35	Previous observation(s) should include multiple age classes or many fish in order to prove that the habitat was occupied by more than one or two exploratory subadults.
Lamprey	5	10	50	Good information about lamprey generation times does not exist, but (depending on species) they could be as long as 10 years (Kathryn Kostow, pers. comm., 7/28/2004).
Oregon Chub	?	?	20	Twenty years minimum because it is unknown how long 5 generations is.

Appendix D.

Distribution Data Update Flow Chart



Determine Data Category.....page 4
 Determine Data Provider Group.....page 6
 Direct Update or IPO Procedures.....page 11
 Procedures to Formulate a CPO.....Page 11

CPO - Concurrence of Professional Opinion
 IPO – Individual Professional Opinion

Appendix E. Recommended Steps to Formulate a Concurrence of Professional Opinion (CPO)

The following steps outline a process for formulating a CPO amongst the biologists within a particular jurisdiction of the state. The need to request a change based on a CPO may be based on the discovery of an error or omission in the existing distribution data or it might originate from information provided by a non-professional. The biologist who initiates a change request using this approach will be responsible for coordinating the formulation of a CPO. S/he will henceforth be called the initiating biologist (IB) and those who have been solicited for their opinion will be called the representative biologists (RB).

Step 1. A professional biologist identifies a need to change Category I distribution data, but no documented observations (that prove presence) or surveys proving fish absence exist.

Step 2. The IB consults the list of jurisdictions by 5th field watershed (Appendix F), contacts the appropriate biologists and requests their professional opinion regarding the proposed change. The IB may use whatever form of communication (phone, fax, email, hardcopy map, electronic map, etc.) that works best to convey the proposed change. A standardized cover letter is available online at:

<ftp://rainbow.dfw.state.or.us/pub/gis/UpdateProtocol/DistributionDataUpdateForm.dot>

Depending upon land ownership or other details where the change is proposed, it may only be necessary to contact a subset of the biologists that are listed for the 5th field watershed. For example, a federal agency is listed as having jurisdiction within the watershed, but the particular stream in question is outside of their specific jurisdiction. The IB may use his/her discretion to determine which RB's need to be contacted, but must justify any exclusions on the change request form. The distribution data manager will determine whether the established criteria are met.

Step 3. The RB's are given a reasonable time frame to respond to the request (4 weeks recommended). If they do not respond within that time frame, the process will move forward. A simple communication stating their dissent will prevent the change from being implemented. In this situation, the dispute resolution process (Appendix A) should be initiated by the IB so that two (or more) biologists can resolve any disagreements, or the proposed change should be dropped.

Step 4. The IB assembles the various responses in order to satisfy the requirements of proposing a change based on a CPO, as well as a list of those representative biologists / watershed jurisdictions who were not contacted and why they were omitted. The names, agencies, contact information and opinions will be required for all the biologists/agencies involved in formulating the CPO. If no state or federal ownership or tribal representation occurs within the 5th field watershed then the opinion of the ODFW biologist will be adequate to satisfy the CPO requirement.

Step 5. The IB then completes the DCR form and e-mails it to the distribution data manager.

Step 6. Implement “[Steps for Requesting a Change to the Data](#)“, Steps 4 – 8 to complete the process. Digital maps displaying the "new" data will be provided to all of the contributing biologists for a final review.

Appendix F. Concurrence of Professional Opinion (CPO) Watershed / Agency List

Subbasin name	Subbasin	Watershed name	Watershed	Ownership		
				BLM	Forest Service	OR Dept. Forestry
ALSEA	17100205	BIG CREEK / VINGIE CREEK	1710020508	No	Yes	No
ALSEA	17100205	DRIFT CREEK	1710020503	Yes	Yes	No
ALSEA	17100205	CUMMINS CREEK/TENMILE CREEK/MERCER LAKE FRONTAL	1710020507	Yes	Yes	No
ALSEA	17100205	FIVE RIVERS/LOBSTER CREEK	1710020502	Yes	Yes	No
ALSEA	17100205	LOWER ALSEA RIVER	1710020504	Yes	Yes	No
ALSEA	17100205	UPPER ALSEA RIVER	1710020501	Yes	Yes	No
ALSEA	17100205	BEAVER CREEK/WALDPORT BAY	1710020505	Yes	Yes	Yes
ALSEA	17100205	YACHATS RIVER	1710020506	Yes	Yes	No
ALVORD LAKE	17120009	BIG ALVORD CREEK	1712000903	Yes	No	No
ALVORD LAKE	17120009	WILLOW CREEK	1712000908	Yes	No	No
ALVORD LAKE	17120009	TWELVEMILE CREEK	1712000906	Yes	No	No
ALVORD LAKE	17120009	WHITEHORSE CREEK	1712000907	Yes	No	No
ALVORD LAKE	17120009	SUMMIT CREEK	1712000905	Yes	No	No
ALVORD LAKE	17120009	ALVORD LAKE	1712000902	Yes	No	No
ALVORD LAKE	17120009	HEATH CREEK	1712000904	Yes	No	No
ALVORD LAKE	17120009	COTTONWOOD CREEK	1712000901	Yes	No	No
APPLEGATE	17100309	LITTLE APPELEGATE RIVER	1710030903	Yes	Yes	No
APPLEGATE	17100309	MIDDLE APPELEGATE RIVER	1710030904	Yes	Yes	No
APPLEGATE	17100309	UPPER APPELEGATE RIVER	1710030901	Yes	Yes	No
APPLEGATE	17100309	LOWER APPELEGATE RIVER	1710030906	Yes	Yes	No
APPLEGATE	17100309	WILLIAMS CREEK	1710030905	Yes	Yes	No
APPLEGATE	17100309	APPELEGATE RIVER/MCKEE BRIDGE	1710030902	Yes	Yes	No
BROWNLEE RESERVOIR	17050201	PINE CREEK	1705020106	Yes	Yes	No
BROWNLEE RESERVOIR	17050201	SNAKE RIVER/BIRCH CREEK	1705020102	Yes	No	No
BROWNLEE RESERVOIR	17050201	BROWNLEE	1705020104	Yes	No	No
BROWNLEE RESERVOIR	17050201	SNAKE RIVER/HOG CREEK	1705020101	Yes	No	No
BROWNLEE RESERVOIR	17050201	SNAKE RIVER/INDIAN CREEK	1705020107	Yes	Yes	No
BROWNLEE RESERVOIR	17050201	WOLF/CONNER	1705020103	Yes	No	No
BULLY	17050118	CLOVER CREEK	1705011802	Yes	No	No
BULLY	17050118	LOWER BULLY CREEK	1705011803	Yes	No	No
BULLY	17050118	UPPER BULLY CREEK	1705011801	Yes	No	No

BURNT RIVER	17050202	PRITCHARD CREEK	1705020207	Yes	No	No
BURNT RIVER	17050202	NORTH FORK BURNT RIVER	1705020201	Yes	Yes	No
BURNT RIVER	17050202	BURNT RIVER/AUBURN CREEK	1705020205	Yes	Yes	No
BURNT RIVER	17050202	LOWER BURNT RIVER	1705020208	Yes	No	No
BURNT RIVER	17050202	BURNT RIVER/BIG CREEK	1705020204	Yes	Yes	No
BURNT RIVER	17050202	BURNT RIVER/BRIDGEPORT	1705020206	Yes	Yes	No
BURNT RIVER	17050202	SOUTH FORK BURNT RIVER	1705020202	Yes	Yes	No
BURNT RIVER	17050202	CAMP CREEK	1705020203	Yes	Yes	No
BUTTE	18010205	MACDOEL/DORRIS	1801020503	Yes	No	Yes
CHETCO	17100312	PISTOL RIVER	1710031204	Yes	Yes	No
CHETCO	17100312	CAPE FERRELO FRONTAL	1710031206	Yes	No	No
CHETCO	17100312	HUNTER CREEK	1710031205	Yes	Yes	No
CHETCO	17100312	CHETCO RIVER	1710031201	Yes	Yes	No
CHETCO	17100312	WINCHUCK RIVER	1710031207	No	Yes	No
CLACKAMAS	17090011	MIDDLE CLACKAMAS RIVER	1709001104	Yes	Yes	No
CLACKAMAS	17090011	COLLAWASH RIVER	1709001101	Yes	Yes	No
CLACKAMAS	17090011	UPPER CLACKAMAS RIVER	1709001102	No	Yes	No
CLACKAMAS	17090011	OAK GROVE FORK CLACKAMAS RIVER	1709001103	No	Yes	No
CLACKAMAS	17090011	LOWER CLACKAMAS RIVER	1709001106	Yes	Yes	No
CLACKAMAS	17090011	EAGLE CREEK	1709001105	Yes	Yes	No
COAST FORK WILLAMETTE	17090002	UPPER COAST FORK WILLAMETTE RIVER	1709000203	Yes	No	No
COAST FORK WILLAMETTE	17090002	LOWER COAST FORK WILLAMETTE RIVER	1709000205	Yes	No	No
COAST FORK WILLAMETTE	17090002	ROW RIVER	1709000201	Yes	Yes	No
COAST FORK WILLAMETTE	17090002	MOSBY CREEK	1709000202	Yes	No	No
COOS	17100304	LAKESIDE FRONTAL	1710030403	Yes	Yes	Yes
COOS	17100304	COOS BAY	1710030404	Yes	Yes	Yes
COOS	17100304	SOUTH FORK COOS	1710030401	Yes	No	No
COOS	17100304	MILLICOMA RIVER	1710030402	No	No	Yes
COQUILLE	17100305	LOWER COQUILLE	1710030506	Yes	No	No
COQUILLE	17100305	MIDDLE MAIN COQUILLE	1710030503	Yes	No	No
COQUILLE	17100305	MIDDLE FORK COQUILLE	1710030502	Yes	Yes	No
COQUILLE	17100305	NORTH FORK COQUILLE	1710030505	Yes	No	No
COQUILLE	17100305	COQUILLE S FK LWR	1710030501	Yes	Yes	No
COQUILLE	17100305	EAST FORK COQUILLE	1710030504	Yes	No	No
CROOKED/RATTLESNAKE	17050109	DRY CREEK	1705010904	Yes	No	No
CROOKED/RATTLESNAKE	17050109	WILDCAT CREEK	1705010903	Yes	No	No
CROOKED/RATTLESNAKE	17050109	LOWER CROOKED CREEK	1705010905	Yes	No	No
CROOKED/RATTLESNAKE	17050109	RATTLESNAKE CREEK	1705010902	Yes	No	No
CROOKED/RATTLESNAKE	17050109	UPPER CROOKED CREEK	1705010901	Yes	No	No

DONNER UND BLITZEN	17120003	UPPER DONNER UND BLITZEN RIVER	1712000302	Yes	No	No
DONNER UND BLITZEN	17120003	MIDDLE DONNER UND BLITZEN RIVER	1712000303	Yes	No	No
DONNER UND BLITZEN	17120003	LOWER DONNER UND BLITZEN RIVER	1712000305	Yes	No	No
DONNER UND BLITZEN	17120003	HEADWATERS DONNER UND BLITZEN RIVER	1712000301	Yes	No	No
DONNER UND BLITZEN	17120003	CUCAMONGA CREEK	1712000304	Yes	No	No
EAST LITTLE OWYHEE	17050106	TENT CREEK	1705010607	Yes	No	No
EAST LITTLE OWYHEE	17050106	WILLOW CREEK	1705010606	Yes	No	No
GOOSE LAKE	18020001	GOOSE LAKE WEST SHORE	1802000104	Yes	Yes	No
GOOSE LAKE	18020001	THOMAS CREEK	1802000102	Yes	Yes	No
GOOSE LAKE	18020001	DREWS CREEK	1802000101	Yes	Yes	No
GOOSE LAKE	18020001	GOOSE LAKE	1802000105	No	No	No
GOOSE LAKE	18020001	GOOSE LAKE EAST SHORE	1802000103	Yes	Yes	No
GUANO	17120008	GUANO CREEK	1712000803	Yes	No	No
GUANO	17120008	LOWER GUANO SLOUGH	1712000805	Yes	No	No
GUANO	17120008	SKULL CREEK	1712000809	Yes	No	No
GUANO	17120008	UPPER GUANO SLOUGH	1712000804	Yes	No	No
GUANO	17120008	WALLS CREEK RESERVOIR	1712000807	Yes	No	No
GUANO	17120008	SHALLOW LAKE	1712000812	Yes	No	No
GUANO	17120008	SAGE HEN CREEK	1712000802	Yes	No	No
GUANO	17120008	DRY CREEK	1712000808	Yes	No	No
GUANO	17120008	ROCK CREEK	1712000806	Yes	No	No
GUANO	17120008	HOME CREEK	1712000810	Yes	No	No
HARNEY/MALHEUR LAKES	17120001	MALHEUR GAP	1712000107	Yes	No	No
HARNEY/MALHEUR LAKES	17120001	MALHEUR LAKE	1712000103	Yes	No	No
HARNEY/MALHEUR LAKES	17120001	RIDDLE CREEK	1712000106	Yes	Yes	No
HARNEY/MALHEUR LAKES	17120001	MALHEUR SLOUGH	1712000102	Yes	No	No
HARNEY/MALHEUR LAKES	17120001	CHAIN LAKES	1712000104	Yes	No	No
HARNEY/MALHEUR LAKES	17120001	JACKASS CREEK	1712000105	Yes	No	No
HARNEY/MALHEUR LAKES	17120001	NORTH BASIN	1712000101	Yes	Yes	No
HELLS CANYON	17060101	SNAKE RIVER/DIVIDE CREEK	1706010104	No	Yes	No
HELLS CANYON	17060101	SNAKE RIVER/GRANITE CREEK	1706010101	No	Yes	No
HELLS CANYON	17060101	SNAKE RIVER/GETTA CREEK	1706010102	No	Yes	No
ILLINOIS	17100311	EAST FORK ILLINOIS RIVER	1710031102	Yes	Yes	No
ILLINOIS	17100311	DEER CREEK	1710031105	Yes	Yes	No
ILLINOIS	17100311	WEST FORK ILLINOIS RIVER	1710031104	Yes	Yes	No
ILLINOIS	17100311	EAST FORK ILLINOIS RIVER	1710031101	Yes	Yes	No
ILLINOIS	17100311	SILVER CREEK	1710031109	Yes	Yes	No
ILLINOIS	17100311	BRIGGS CREEK	1710031107	No	Yes	No
ILLINOIS	17100311	ILLINOIS RIVER/LAWSON CREEK	1710031111	No	Yes	No

ILLINOIS	17100311	SUCKER CREEK	1710031103	Yes	Yes	No
ILLINOIS	17100311	ILLINOIS RIVER/KLONDIKE CREEK	1710031108	No	Yes	No
ILLINOIS	17100311	ILLINOIS RIVER/JOSEPHINE CREEK	1710031106	Yes	Yes	No
ILLINOIS	17100311	INDIGO CREEK	1710031110	Yes	Yes	No
IMNAHA RIVER	17060102	BIG SHEEP CREEK	1706010203	No	Yes	No
IMNAHA RIVER	17060102	MIDDLE IMNAHA RIVER	1706010202	No	Yes	No
IMNAHA RIVER	17060102	LITTLE SHEEP CREEK	1706010204	Yes	Yes	No
IMNAHA RIVER	17060102	LOWER IMNAHA RIVER	1706010205	Yes	Yes	No
IMNAHA RIVER	17060102	UPPER IMNAHA RIVER	1706010201	No	Yes	No
JORDAN	17050108	JORDAN CREEK/SHEEP SPRING CREEK	1705010805	Yes	No	No
JORDAN	17050108	UPPER COW CREEK	1705010806	Yes	No	No
JORDAN	17050108	JORDAN CREEK/DRY CREEK	1705010808	Yes	No	No
JORDAN	17050108	LOWER COW CREEK	1705010807	Yes	No	No
JORDAN	17050108	JORDAN CREEK/TROUT CREEK	1705010804	Yes	No	No
LAKE ABERT	17120006	LAKE ABERT	1712000605	Yes	No	No
LAKE ABERT	17120006	CROOKED CREEK	1712000603	Yes	Yes	No
LAKE ABERT	17120006	MIDDLE CHEWAUCAN RIVER	1712000602	Yes	Yes	No
LAKE ABERT	17120006	LOWER CHEWAUCAN RIVER	1712000604	Yes	Yes	No
LAKE ABERT	17120006	TWIN LAKES	1712000606	Yes	No	No
LAKE ABERT	17120006	UPPER CHEWAUCAN RIVER	1712000601	No	Yes	No
LOST RIVER	18010204	LOWER KLAMATH LAKE	1801020414	Yes	No	Yes
LOST RIVER	18010204	COPIC BAY	1801020411	No	No	No
LOST RIVER	18010204	UPPER LOST RIVER	1801020404	Yes	Yes	No
LOST RIVER	18010204	NORTH FORK WILLOW CREEK	1801020402	Yes	Yes	No
LOST RIVER	18010204	LANGELL VALLEY	1801020406	Yes	Yes	Yes
LOST RIVER	18010204	POE VALLEY/YONNA VALLEY	1801020407	Yes	Yes	No
LOST RIVER	18010204	LAKE EWAUNA/UPPER KLAMATH RIVER	1801020412	Yes	Yes	Yes
LOST RIVER	18010204	LOWER LOST RIVER	1801020409	Yes	No	No
LOST RIVER	18010204	GERBER RESERVOIR	1801020405	Yes	Yes	Yes
LOST RIVER	18010204	SWAN LAKE VALLEY	1801020408	Yes	Yes	No
LOWER COLUMBIA	17080006	BIG CREEK	1708000602	No	No	Yes
LOWER COLUMBIA	17080006	YOUNGS RIVER	1708000601	No	No	Yes
LOWER COLUMBIA/CLATSKANIE	17080003	CLATSKANIE RIVER	1708000303	Yes	No	Yes
LOWER COLUMBIA/CLATSKANIE	17080003	BEAVER CREEK/COLUMBIA RIVER	1708000302	No	No	Yes
LOWER COLUMBIA/CLATSKANIE	17080003	PLYMPTON CREEK	1708000306	No	No	Yes
LOWER COLUMBIA/SANDY	17080001	SALMON RIVER	1708000101	Yes	Yes	No
LOWER COLUMBIA/SANDY	17080001	UPPER SANDY RIVER	1708000103	Yes	Yes	No
LOWER COLUMBIA/SANDY	17080001	ZIGZAG RIVER	1708000102	No	Yes	No
LOWER COLUMBIA/SANDY	17080001	BULL RUN RIVER	1708000105	Yes	Yes	No

LOWER COLUMBIA/SANDY	17080001	MIDDLE SANDY RIVER	1708000104	Yes	Yes	No
LOWER COLUMBIA/SANDY	17080001	LOWER SANDY RIVER	1708000108	Yes	Yes	No
LOWER COLUMBIA/SANDY	17080001	COLUMBIA GORGE TRIBUTARIES	1708000107	Yes	Yes	No
LOWER CROOKED	17070305	BADLANDS	1707030506	Yes	Yes	No
LOWER CROOKED	17070305	MILL CREEK	1707030503	No	Yes	No
LOWER CROOKED	17070305	LOWER OCHOCO CREEK	1707030504	Yes	Yes	No
LOWER CROOKED	17070305	MCKAY CREEK	1707030505	Yes	Yes	No
LOWER CROOKED	17070305	LOWER DRY RIVER	1707030508	Yes	Yes	No
LOWER CROOKED	17070305	CROOKED RIVER VALLEY	1707030510	Yes	Yes	No
LOWER CROOKED	17070305	CROOKED RIVER IRRIGATION CANALS	1707030509	Yes	No	No
LOWER CROOKED	17070305	CROOKED RIVER GRASSLAND	1707030511	Yes	Yes	No
LOWER CROOKED	17070305	UPPER OCHOCO CREEK	1707030502	No	Yes	No
LOWER CROOKED	17070305	UPPER DRY RIVER	1707030507	Yes	Yes	No
LOWER CROOKED	17070305	CHIMNEY ROCK	1707030501	Yes	No	No
LOWER DESCHUTES	17070306	LOWER DESCHUTES RIVER	1707030612	Yes	No	No
LOWER DESCHUTES	17070306	MIDDLE DESCHUTES RIVER	1707030607	Yes	Yes	No
LOWER DESCHUTES	17070306	HEADWATERS DESCHUTES RIVER	1707030601	Yes	Yes	No
LOWER DESCHUTES	17070306	TYGH CREEK	1707030609	Yes	Yes	No
LOWER DESCHUTES	17070306	WILLOW CREEK	1707030602	Yes	Yes	No
LOWER DESCHUTES	17070306	BAKEOVEN CREEK	1707030608	Yes	No	No
LOWER DESCHUTES	17070306	BEAVER CREEK	1707030605	No	Yes	No
LOWER DESCHUTES	17070306	UPPER DESCHUTES RIVER	1707030603	Yes	Yes	No
LOWER DESCHUTES	17070306	BUCK HOLLOW CREEK	1707030611	Yes	No	No
LOWER DESCHUTES	17070306	WHITE RIVER	1707030610	Yes	Yes	No
LOWER DESCHUTES	17070306	WARM SPRINGS RIVER	1707030606	No	Yes	No
LOWER DESCHUTES	17070306	MILL CREEK	1707030604	No	Yes	No
LOWER GRANDE RONDE	17060106	UPPER JOSEPH CREEK	1706010605	Yes	Yes	No
LOWER GRANDE RONDE	17060106	GRANDE RONDE RIVER/MUD CREEK	1706010602	Yes	Yes	No
LOWER GRANDE RONDE	17060106	LOWER JOSEPH CREEK	1706010606	Yes	Yes	No
LOWER GRANDE RONDE	17060106	LOWER GRANDE RONDE RIVER/MEINATCHE CREEK	1706010607	Yes	No	No
LOWER GRANDE RONDE	17060106	GRANDE RONDE RIVER/RONDOWA	1706010601	Yes	Yes	No
LOWER GRANDE RONDE	17060106	CHESNIMNUS CREEK	1706010604	No	Yes	No
LOWER GRANDE RONDE	17060106	WENEHA RIVER	1706010603	Yes	Yes	No
LOWER JOHN DAY	17070204	LOWER ROCK CREEK	1707020412	Yes	No	No
LOWER JOHN DAY	17070204	PINE HOLLOW	1707020407	Yes	No	No
LOWER JOHN DAY	17070204	LOWER JOHN DAY RIVER/SERVICE CREEK	1707020402	Yes	No	No
LOWER JOHN DAY	17070204	LOWER JOHN DAY RIVER/SCOTT CANYON	1707020410	Yes	No	No
LOWER JOHN DAY	17070204	LOWER JOHN DAY RIVER/MUDDY CREEK	1707020404	Yes	No	No

LOWER JOHN DAY	17070204	LOWER JOHN DAY RIVER/MCDONALD FERRY	1707020414	Yes	No	No
LOWER JOHN DAY	17070204	LOWER JOHN DAY RIVER/KAHLER CREEK	1707020401	Yes	Yes	No
LOWER JOHN DAY	17070204	LOWER JOHN DAY RIVER/FERRY CANYON	1707020409	Yes	No	No
LOWER JOHN DAY	17070204	LOWER JOHN DAY RIVER/CIARNO	1707020405	Yes	No	No
LOWER JOHN DAY	17070204	BRIDGE CREEK	1707020403	Yes	Yes	No
LOWER JOHN DAY	17070204	THIRTYMILE CREEK	1707020408	Yes	No	No
LOWER JOHN DAY	17070204	BUTTE CREEK	1707020406	Yes	No	No
LOWER JOHN DAY	17070204	UPPER ROCK CREEK	1707020411	Yes	Yes	No
LOWER JOHN DAY	17070204	GRASS VALLEY CANYON	1707020413	Yes	No	No
LOWER KLAMATH RIVER	18010209	CHINA PEAK	1801020901	No	Yes	No
LOWER KLAMATH RIVER	18010209	INDIAN CREEK	1801020902	No	Yes	No
LOWER MALHEUR	17050117	COTTONWOOD CREEK	1705011703	Yes	No	No
LOWER MALHEUR	17050117	LOWER MALHEUR RIVER/HUNTER CREEK	1705011701	Yes	No	No
LOWER MALHEUR	17050117	LOWER MALHEUR RIVER/JOHNSTON GULCH RESERVOIR	1705011706	Yes	No	No
LOWER MALHEUR	17050117	LOWER MALHEUR RIVER/LITTLE SANDY RESERVOIR	1705011704	Yes	No	No
LOWER MALHEUR	17050117	SAND HOLLOW CREEK	1705011705	Yes	No	No
LOWER MALHEUR	17050117	LOWER MALHEUR RIVER/HOG CREEK	1705011702	Yes	No	No
LOWER OWYHEE	17050110	UPPER DRY CREEK	1705011004	Yes	No	No
LOWER OWYHEE	17050110	OWYHEE RIVER/THREE FINGERS GULCH	1705011006	Yes	No	No
LOWER OWYHEE	17050110	OWYHEE RIVER/SAND HOLLOW CREEK	1705011007	Yes	No	No
LOWER OWYHEE	17050110	OWYHEE RIVER/JACKSON CREEK	1705011002	Yes	No	No
LOWER OWYHEE	17050110	OWYHEE RIVER/RYEGRASS CREEK	1705011001	Yes	No	No
LOWER OWYHEE	17050110	CROWLEY CREEK	1705011003	Yes	No	No
LOWER OWYHEE	17050110	LOWER DRY CREEK	1705011005	Yes	No	No
LOWER ROGUE	17100310	LOWER ROGUE	1710031008	Yes	Yes	No
LOWER ROGUE	17100310	JUMPOFF JOE CREEK	1710031002	Yes	No	No
LOWER ROGUE	17100310	LOBSTER CREEK	1710031007	Yes	Yes	No
LOWER ROGUE	17100310	GRAVE CREEK	1710031003	Yes	No	Yes
LOWER ROGUE	17100310	ROGUE RIVER/STAIR CREEK	1710031005	Yes	Yes	No
LOWER ROGUE	17100310	ROGUE RIVER/ILLAHE CREEK	1710031006	No	Yes	No
LOWER ROGUE	17100310	ROGUE RIVER/HORSESHOE BEND	1710031004	Yes	Yes	No
LOWER ROGUE	17100310	ROGUE RIVER/HELLGATE	1710031001	Yes	Yes	No
LOWER SNAKE/ASOTIN	17060103	SNAKE RIVER/ROGERSBURG	1706010301	No	Yes	No
LOWER WILLAMETTE	17090012	JOHNSON CREEK	1709001201	No	No	No
LOWER WILLAMETTE	17090012	COLUMBIA SLOUGH/WILLAMETTE RIVER	1709001203	No	No	No
LOWER WILLAMETTE	17090012	SCAPPOOSE CREEK	1709001202	Yes	No	Yes
MCKENZIE	17090004	SOUTH FORK MCKENZIE RIVER	1709000403	No	Yes	No

MCKENZIE	17090004	MOHAWK RIVER	1709000406	Yes	No	No
MCKENZIE	17090004	BLUE RIVER	1709000404	No	Yes	No
MCKENZIE	17090004	LOWER MCKENZIE RIVER	1709000407	Yes	Yes	No
MCKENZIE	17090004	UPPER MCKENZIE RIVER	1709000401	No	Yes	No
MCKENZIE	17090004	MCKENZIE RIVER/QUARTZ CREEK	1709000405	No	Yes	No
MCKENZIE	17090004	HORSE CREEK	1709000402	No	Yes	No
MIDDLE COLUMBIA/HOOD	17070105	EAST FORK HOOD RIVER	1707010506	Yes	Yes	No
MIDDLE COLUMBIA/HOOD	17070105	MIDDLE COLUMBIA/EAGLE CREEK	1707010513	No	Yes	No
MIDDLE COLUMBIA/HOOD	17070105	MOSIER CREEK	1707010505	Yes	Yes	No
MIDDLE COLUMBIA/HOOD	17070105	MIDDLE COLUMBIA/MILL CREEK	1707010504	Yes	Yes	No
MIDDLE COLUMBIA/HOOD	17070105	WEST FORK HOOD RIVER	1707010507	No	Yes	No
MIDDLE COLUMBIA/HOOD	17070105	FIFTEENMILE CREEK	1707010502	Yes	Yes	No
MIDDLE COLUMBIA/HOOD	17070105	FIVEMILE CREEK	1707010503	Yes	Yes	No
MIDDLE COLUMBIA/HOOD	17070105	HOOD RIVER	1707010508	Yes	Yes	No
MIDDLE COLUMBIA/HOOD	17070105	UPPER MIDDLE COLUMBIA/HOOD	1707010501	Yes	Yes	No
MIDDLE COLUMBIA/HOOD	17070105	MIDDLE COLUMBIA/GRAYS CREEK	1707010512	No	Yes	No
MIDDLE COLUMBIA/LAKE	17070101	JUNIPER CANYON	1707010107	No	No	No
WALLULA	17070101	LOWER LAKE WALLULA	1707010102	Yes	No	No
WALLULA	17070101	MIDDLE LAKE UMATILLA	1707010109	No	No	No
MIDDLE COLUMBIA/LAKE	17070101	UPPER LAKE UMATILLA	1707010106	Yes	No	No
MIDDLE COLUMBIA/LAKE	17070101	LOWER LAKE UMATILLA	1707010114	Yes	No	No
MIDDLE COLUMBIA/LAKE	17070101	SIXMILE CANYON	1707010108	No	No	No
MIDDLE FORK JOHN DAY	17070203	BIG CREEK	1707020303	Yes	Yes	No
MIDDLE FORK JOHN DAY	17070203	UPPER MIDDLE FORK JOHN DAY RIVER	1707020301	Yes	Yes	No
MIDDLE FORK JOHN DAY	17070203	CAMP CREEK	1707020302	No	Yes	No
MIDDLE FORK JOHN DAY	17070203	LONG CREEK	1707020304	Yes	Yes	No
MIDDLE FORK JOHN DAY	17070203	LOWER MIDDLE FORK JOHN DAY RIVER	1707020305	Yes	Yes	No
MIDDLE FORK WILLAMETTE	17090001	LOWER MIDDLE FORK OF WILLAMETTE RIVER	1709000110	Yes	No	No
MIDDLE FORK WILLAMETTE	17090001	UPPER MIDDLE FORK WILLAMETTE RIVER	1709000101	No	Yes	No
MIDDLE FORK WILLAMETTE	17090001	SALMON CREEK	1709000104	No	Yes	No
MIDDLE FORK WILLAMETTE	17090001	SALT CREEK/WILLAMETTE RIVER	1709000103	No	Yes	No
MIDDLE FORK WILLAMETTE	17090001	LITTLE FALL CREEK	1709000108	Yes	Yes	No
MIDDLE FORK WILLAMETTE	17090001	HILLS CREEK RESERVOIR	1709000105	No	Yes	No

MIDDLE FORK WILLAMETTE	170900001	MIDDLE FORK WILLAMETTE/LOOKOUT POINT	1709000107	Yes	Yes	No
MIDDLE FORK WILLAMETTE	170900001	HILLS CREEK	1709000102	No	Yes	No
MIDDLE FORK WILLAMETTE	170900001	NORTH FORK OF MIDDLE FORK WILLAMETTE RIVER	1709000106	No	Yes	No
MIDDLE FORK WILLAMETTE	170900001	FALL CREEK	1709000109	Yes	Yes	No
MIDDLE OWYHEE	17050107	ANTELOPE CREEK	1705010702	Yes	No	No
MIDDLE OWYHEE	17050107	OWYHEE RIVER/SKULL CREEK	1705010707	Yes	No	No
MIDDLE OWYHEE	17050107	WEST LITTLE OWYHEE RIVER	1705010701	Yes	No	No
MIDDLE OWYHEE	17050107	SOLDIER CREEK	1705010706	Yes	No	No
MIDDLE OWYHEE	17050107	NORTH FORK OWYHEE RIVER	1705010704	Yes	No	No
MIDDLE OWYHEE	17050107	OWYHEE RIVER/OREGON LAKE	1705010705	Yes	No	No
MIDDLE OWYHEE	17050107	MIDDLE FORK OWYHEE RIVER	1705010703	Yes	No	No
MIDDLE ROGUE	17100308	ROGUE RIVER/GOLD HILL	1710030802	Yes	No	No
MIDDLE ROGUE	17100308	ROGUE RIVER/GRANTS PASS	1710030804	Yes	No	No
MIDDLE ROGUE	17100308	BEAR CREEK	1710030801	Yes	Yes	No
MIDDLE ROGUE	17100308	EVANS CREEK	1710030803	Yes	Yes	No
MIDDLE SNAKE/PAYETTE	17050115	SNAKE RIVER/JACOBSEN GULCH	1705011502	Yes	No	No
MIDDLE SNAKE/PAYETTE	17050115	SNAKE RIVER/LOCKET GULCH	1705011501	Yes	No	No
MIDDLE SNAKE/SUCCOR	17050103	SNAKE RIVER/NORTH ALKALI CREEK	1705010315	Yes	No	No
MIDDLE SNAKE/SUCCOR	17050103	LOWER SUCCOR CREEK	1705010313	Yes	No	No
MIDDLE SNAKE/SUCCOR	17050103	SNAKE RIVER/JUMP CREEK	1705010314	Yes	No	No
MIDDLE SNAKE/SUCCOR	17050103	UPPER SUCCOR CREEK	1705010312	Yes	No	No
MIDDLE WILLAMETTE	17090007	MILL CREEK/WILLAMETTE RIVER	1709000701	Yes	No	Yes
MIDDLE WILLAMETTE	17090007	WILLAMETTE RIVER/CHEHALEM CREEK	1709000703	No	No	Yes
MIDDLE WILLAMETTE	17090007	RICKREALL CREEK	1709000702	Yes	Yes	Yes
MIDDLE WILLAMETTE	17090007	ABERNETHY CREEK	1709000704	Yes	No	No
MOLALLA/PUDDING	17090009	LOWER MOLALLA RIVER	1709000906	Yes	Yes	No
MOLALLA/PUDDING	17090009	BUTTE CREEK/PUDDING RIVER	1709000902	Yes	No	Yes
MOLALLA/PUDDING	17090009	ROCK CREEK/PUDDING RIVER	1709000903	Yes	No	No
MOLALLA/PUDDING	17090009	UPPER MOLALLA RIVER	1709000905	Yes	Yes	Yes
MOLALLA/PUDDING	17090009	SENECAL CREEK/MILL CREEK	1709000904	No	No	No
MOLALLA/PUDDING	17090009	ABIQUA CREEK/PUDDING RIVER	1709000901	Yes	No	Yes
NECANICUM	17100201	NECANICUM RIVER	1710020101	No	No	Yes
NEHALEM	17100202	SALMONBERRY RIVER	1710020204	No	No	Yes
NEHALEM	17100202	LOWER NEHALEM RIVER	1710020203	Yes	No	Yes
NEHALEM	17100202	LOWER NEHALEM RIVER/COOK CREEK	1710020206	No	No	Yes
NEHALEM	17100202	MIDDLE NEHALEM RIVER	1710020202	No	No	Yes
NEHALEM	17100202	UPPER NEHALEM RIVER	1710020201	Yes	No	Yes
NEHALEM	17100202	NORTH FORK OF NEHALEM RIVER	1710020205	No	No	Yes

NORTH FORK JOHN DAY	17070202	GRANITE CREEK	1707020202	No	Yes	No
NORTH FORK JOHN DAY	17070202	UPPER NORTH FORK JOHN DAY RIVER	1707020201	No	Yes	No
NORTH FORK JOHN DAY	17070202	LOWER CAMAS CREEK	1707020206	Yes	Yes	No
NORTH FORK JOHN DAY	17070202	LOWER NORTH FORK JOHN DAY RIVER	1707020210	Yes	Yes	No
NORTH FORK JOHN DAY	17070202	NORTH FORK JOHN DAY RIVER/POTAMUS CREEK	1707020207	Yes	Yes	No
NORTH FORK JOHN DAY	17070202	UPPER CAMAS CREEK	1707020205	Yes	Yes	No
NORTH FORK JOHN DAY	17070202	COTTONWOOD CREEK	1707020209	Yes	Yes	No
NORTH FORK JOHN DAY	17070202	WALL CREEK	1707020208	Yes	Yes	No
NORTH FORK JOHN DAY	17070202	DESOLATION CREEK	1707020204	Yes	Yes	No
NORTH FORK JOHN DAY	17070202	NORTH FORK JOHN DAY RIVER/BIG CREEK	1707020203	Yes	Yes	No
NORTH SANTIAM	17090005	LOWER NORTH SANTIAM RIVER	1709000506	Yes	No	Yes
NORTH SANTIAM	17090005	UPPER NORTH SANTIAM RIVER	1709000501	No	Yes	Yes
NORTH SANTIAM	17090005	NORTH FORK BREITENBUSH RIVER	1709000502	No	Yes	No
NORTH SANTIAM	17090005	LITTLE NORTH SANTIAM RIVER	1709000505	Yes	Yes	Yes
NORTH SANTIAM	17090005	DETROIT RESERVOIR/BLOW OUT DIVIDE CREEK	1709000503	Yes	Yes	Yes
NORTH SANTIAM	17090005	MIDDLE NORTH SANTIAM RIVER	1709000504	Yes	Yes	Yes
NORTH UMPQUA	17100301	LOWER NORTH UMPQUA RIVER	1710030112	Yes	No	No
NORTH UMPQUA	17100301	ROCK CREEK/NORTH UMPQUA RIVER	1710030110	Yes	Yes	No
NORTH UMPQUA	17100301	UPPER NORTH UMPQUA	1710030103	No	Yes	No
NORTH UMPQUA	17100301	CANTON CREEK	1710030109	Yes	Yes	No
NORTH UMPQUA	17100301	LITTLE RIVER	1710030111	Yes	Yes	No
NORTH UMPQUA	17100301	BOULDER CREEK	1710030106	No	Yes	No
NORTH UMPQUA	17100301	CLEARWATER	1710030104	No	Yes	No
NORTH UMPQUA	17100301	FISH CREEK	1710030105	No	Yes	No
NORTH UMPQUA	17100301	DIAMOND LAKE	1710030101	No	Yes	No
NORTH UMPQUA	17100301	LEMOLO LAKE	1710030102	No	Yes	No
NORTH UMPQUA	17100301	MIDDLE NORTH UMPQUA	1710030107	Yes	Yes	No
NORTH UMPQUA	17100301	STEAMBOAT CREEK	1710030108	No	Yes	No
POWDER RIVER	17050203	LOWER POWDER RIVER	1705020312	Yes	Yes	No
POWDER RIVER	17050203	MIDDLE POWDER RIVER	1705020308	Yes	Yes	No
POWDER RIVER	17050203	UPPER EAGLE CREEK	1705020310	Yes	Yes	No
POWDER RIVER	17050203	POWDER RIVER/WOLF CREEK	1705020306	Yes	Yes	No
POWDER RIVER	17050203	POWDER RIVER/SALISBURY	1705020302	Yes	Yes	No
POWDER RIVER	17050203	POWDER RIVER/ROCK CREEK	1705020304	Yes	Yes	No
POWDER RIVER	17050203	UPPER POWDER RIVER	1705020301	Yes	Yes	No
POWDER RIVER	17050203	NORTH POWDER RIVER	1705020305	Yes	Yes	No
POWDER RIVER	17050203	POWDER RIVER/LOVE CREEK	1705020309	Yes	No	No

POWDER RIVER	17050203	POWDER RIVER/BIG CREEK	1705020307	Yes	Yes	No
POWDER RIVER	17050203	POWDER RIVER/HAINES	1705020303	Yes	Yes	No
SILETZ/YAQUINA	17100204	ROCK CREEK/SILETZ RIVER	1710020406	Yes	No	Yes
SILETZ/YAQUINA	17100204	UPPER YAQUINA RIVER	1710020401	Yes	No	Yes
SILETZ/YAQUINA	17100204	UPPER SILETZ RIVER	1710020404	Yes	No	No
SILETZ/YAQUINA	17100204	BIG ELK CREEK	1710020402	Yes	Yes	Yes
SILETZ/YAQUINA	17100204	LOWER YAQUINA RIVER	1710020403	Yes	Yes	No
SILETZ/YAQUINA	17100204	LOWER SILETZ RIVER	1710020407	Yes	Yes	Yes
SILETZ/YAQUINA	17100204	DEVILS LAKE/MOOLACK FRONTAL	1710020409	Yes	Yes	No
SILETZ/YAQUINA	17100204	SALMON RIVER/SILETZ/YAQUINA BAY	1710020408	Yes	Yes	No
SILETZ/YAQUINA	17100204	MIDDLE SILETZ RIVER	1710020405	Yes	No	Yes
SILTCOOS	17100207	WAOHINK RIVER/SILTCOOS RIVER/TAHKENITCH LAKE FRONTAL	1710020701	Yes	Yes	No
SILVER	17120004	BIG TANK CREEK	1712000411	Yes	No	No
SILVER	17120004	MIDDLE SILVER CREEK	1712000405	Yes	No	No
SILVER	17120004	HEADWATERS SILVER CREEK	1712000401	Yes	Yes	No
SILVER	17120004	CAPEHART LAKE	1712000407	Yes	No	No
SILVER	17120004	CLAW CREEK	1712000402	Yes	Yes	No
SILVER	17120004	WHEATGRASS LAKE	1712000413	Yes	No	No
SILVER	17120004	WILSON CREEK	1712000410	Yes	No	No
SILVER	17120004	FLYBEE LAKE	1712000409	Yes	No	No
SILVER	17120004	LOWER SILVER CREEK	1712000406	Yes	No	No
SILVER	17120004	UPPER SILVER CREEK	1712000403	Yes	Yes	No
SILVER	17120004	BUZZARD CREEK	1712000408	Yes	No	No
SILVER	17120004	BIG STICK CREEK	1712000412	Yes	No	No
SILVIES	17120002	UPPER SILVIES	1712000201	No	Yes	No
SILVIES	17120002	SILVIES RIVER/WEST FORK SILVIES RIVER	1712000208	Yes	Yes	No
SILVIES	17120002	EMIGRANT CREEK	1712000206	Yes	Yes	No
SILVIES	17120002	SILVIES CANYON	1712000205	Yes	Yes	No
SILVIES	17120002	WILLOW CREEK	1712000207	Yes	Yes	No
SILVIES	17120002	BEAR CREEK	1712000202	No	Yes	No
SILVIES	17120002	TROUT CREEK	1712000203	Yes	Yes	No
SIUSLAW	17100206	NORTH FORK SIUSLAW RIVER	1710020607	Yes	Yes	No
SIUSLAW	17100206	LOWER SIUSLAW RIVER	1710020608	Yes	Yes	Yes
SIUSLAW	17100206	WILDCAT CREEK	1710020603	Yes	No	Yes
SIUSLAW	17100206	UPPER SIUSLAW RIVER	1710020601	Yes	No	Yes
SIUSLAW	17100206	LAKE CREEK	1710020604	Yes	Yes	Yes
SIUSLAW	17100206	WOLF CREEK	1710020602	Yes	No	Yes
SIUSLAW	17100206	INDIAN CREEK/LAKE CREEK	1710020606	No	Yes	No

SIUSLAW	17100206	DEADWOOD CREEK	1710020605	Yes	Yes	Yes	Yes
SIXES	17100306	ELK RIVER	1710030602	Yes	Yes	Yes	No
SIXES	17100306	HUMBUG NESIKA FRONTAL	1710030601	Yes	Yes	Yes	No
SIXES	17100306	NEW RIVER FRONTAL	1710030604	Yes	Yes	Yes	No
SIXES	17100306	SIXES RIVER	1710030603	Yes	Yes	Yes	No
SMITH RIVER	18010101	NORTH FORK SMITH RIVER	1801010101	No	Yes	Yes	No
SMITH RIVER	18010101	LOWER SMITH RIVER	1801010104	No	Yes	Yes	No
SMITH RIVER	18010101	MIDDLE FORK SMITH RIVER	1801010102	No	Yes	Yes	No
SOUTH FORK CROOKED	17070303	UPPER SOUTH FORK CROOKED RIVER	1707030302	Yes	No	No	No
SOUTH FORK CROOKED	17070303	GRINDSTONE CREEK	1707030306	Yes	Yes	Yes	No
SOUTH FORK CROOKED	17070303	LOWER BEAVER CREEK	1707030310	Yes	Yes	Yes	No
SOUTH FORK CROOKED	17070303	TWELVEMILE CREEK	1707030305	Yes	Yes	Yes	No
SOUTH FORK CROOKED	17070303	UPPER BEAVER CREEK	1707030308	Yes	Yes	Yes	No
SOUTH FORK CROOKED	17070303	SOLDIER CAP	1707030301	Yes	No	No	No
SOUTH FORK CROOKED	17070303	BUCK CREEK	1707030303	Yes	Yes	Yes	No
SOUTH FORK CROOKED	17070303	PAULINA CREEK	1707030309	Yes	Yes	Yes	No
SOUTH FORK CROOKED	17070303	LOWER SOUTH FORK CROOKED RIVER	1707030304	Yes	No	No	No
SOUTH FORK CROOKED	17070303	SOUTH FORK BEAVER CREEK	1707030307	Yes	Yes	Yes	No
SOUTH FORK OWYHEE	17050105	LOWER SOUTH FORK OWYHEE RIVER	1705010599	Yes	No	No	No
SOUTH SANTIAM	17090006	THOMAS CREEK	1709000603	Yes	Yes	Yes	Yes
SOUTH SANTIAM	17090006	SOUTH SANTIAM RIVER	1709000606	No	Yes	Yes	No
SOUTH SANTIAM	17090006	MIDDLE SANTIAM RIVER	1709000605	Yes	Yes	Yes	No
SOUTH SANTIAM	17090006	WILEY CREEK	1709000608	Yes	Yes	Yes	No
SOUTH SANTIAM	17090006	HAMILTON CREEK/SOUTH SANTIAM RIVER	1709000601	Yes	No	Yes	Yes
SOUTH SANTIAM	17090006	QUARTZVILLE CREEK	1709000604	Yes	Yes	Yes	Yes
SOUTH SANTIAM	17090006	CRABTREE CREEK	1709000602	Yes	No	Yes	Yes
SOUTH SANTIAM	17090006	SOUTH SANTIAM RIVER / FOSTER RESERVOIR	1709000607	Yes	Yes	Yes	Yes
SOUTH UMPQUA	17100302	MYRTLE CREEK	1710030211	Yes	Yes	Yes	No
SOUTH UMPQUA	17100302	UPPER SOUTH UMPQUA RIVER	1710030201	No	Yes	Yes	No
SOUTH UMPQUA	17100302	MIDDLE COW CREEK	1710030207	Yes	No	No	Yes
SOUTH UMPQUA	17100302	MIDDLE SOUTH UMPQUA RIVER	1710030210	Yes	No	No	No
SOUTH UMPQUA	17100302	WEST FORK COW CREEK	1710030208	Yes	Yes	Yes	No
SOUTH UMPQUA	17100302	LOWER SOUTH UMPQUA RIVER	1710030213	Yes	No	No	No
SOUTH UMPQUA	17100302	JACKSON CREEK	1710030202	No	Yes	Yes	No
SOUTH UMPQUA	17100302	MIDDLE SOUTH UMPQUA RIVER	1710030203	Yes	Yes	Yes	No
SOUTH UMPQUA	17100302	ELK CREEK/SOUTH UMPQUA	1710030204	Yes	Yes	Yes	No
SOUTH UMPQUA	17100302	UPPER COW CREEK	1710030206	Yes	Yes	Yes	No
SOUTH UMPQUA	17100302	LOWER COW CREEK	1710030209	Yes	No	No	Yes

SOUTH UMPQUA	17100302	OLLALA CREEK/LOOKINGGLASS	1710030212	Yes	No	No
SOUTH UMPQUA	17100302	SOUTH UMPQUA RIVER	1710030205	Yes	Yes	Yes
SPRAGUE	18010202	SPRAGUE RIVER ABOVE WILLIAMSON RIVER	1801020207	Yes	Yes	Yes
SPRAGUE	18010202	SOUTH FORK SPRAGUE RIVER	1801020205	Yes	Yes	Yes
SPRAGUE	18010202	SPRAGUE RIVER VALLEY	1801020208	Yes	Yes	Yes
SPRAGUE	18010202	NORTH FORK SPRAGUE RIVER	1801020204	No	Yes	Yes
SPRAGUE	18010202	SYCAN RIVER ABOVE SPRAGUE RIVER	1801020203	No	Yes	Yes
SPRAGUE	18010202	SYCAN RIVER ABOVE SYCAN MARSH	1801020201	No	Yes	No
SPRAGUE	18010202	SYCAN RIVER AT SYCAN MARSH	1801020202	No	Yes	No
SPRAGUE	18010202	SPRAGUE RIVER ABOVE SYCAN RIVER	1801020206	Yes	Yes	Yes
SUMMER LAKE	17120005	SILVER CREEK	1712000502	Yes	Yes	No
SUMMER LAKE	17120005	CHRISTMAS LAKE VALLEY	1712000512	Yes	No	No
SUMMER LAKE	17120005	SILVER LAKE	1712000503	Yes	Yes	No
SUMMER LAKE	17120005	HORSE MOUNTAIN SPRING	1712000519	Yes	Yes	No
SUMMER LAKE	17120005	POST LAKE	1712000511	Yes	No	No
SUMMER LAKE	17120005	TIRED HORSE LAKE	1712000514	Yes	No	No
SUMMER LAKE	17120005	BUCK CREEK	1712000501	Yes	Yes	No
SUMMER LAKE	17120005	DEVILS GARDEN	1712000507	Yes	Yes	No
SUMMER LAKE	17120005	PETERS CREEK	1712000509	Yes	No	No
SUMMER LAKE	17120005	MC CARTY	1712000505	Yes	Yes	No
SUMMER LAKE	17120005	ALKALI LAKE	1712000518	Yes	No	No
SUMMER LAKE	17120005	WALKER CREEK	1712000508	Yes	Yes	No
SUMMER LAKE	17120005	SAGEHEN WATERHOLE	1712000513	Yes	No	No
SUMMER LAKE	17120005	FIRE LAKE	1712000517	Yes	No	No
SUMMER LAKE	17120005	PACKSADDLE DRAW	1712000520	Yes	No	No
SUMMER LAKE	17120005	SUMMER LAKE	1712000510	Yes	Yes	No
SUMMER LAKE	17120005	HIDDEN LAKE	1712000515	Yes	No	No
SUMMER LAKE	17120005	POVERTY BASIN	1712000516	Yes	No	No
SUMMER LAKE	17120005	PINE	1712000506	Yes	Yes	No
SUMMER LAKE	17120005	THORN LAKE	1712000504	Yes	No	No
THOUSAND/VIRGIN	16040205	BIG SPRING CREEK	1604020501	Yes	No	No
THOUSAND/VIRGIN	16040205	LOWER RINCON CREEK	1604020506	Yes	No	No
THOUSAND/VIRGIN	16040205	LONG DRAW	1604020502	Yes	No	No
THOUSAND/VIRGIN	16040205	UPPER RINCON CREEK	1604020505	Yes	No	No
TROUT	17070307	UPPER TROUT CREEK	1707030701	Yes	Yes	No
TROUT	17070307	HAY CREEK	1707030703	Yes	Yes	No
TROUT	17070307	ANTELOPE CREEK	1707030702	Yes	No	No
TROUT	17070307	LOWER TROUT CREEK	1707030705	Yes	No	No
TROUT	17070307	MUD SPRINGS CREEK	1707030704	Yes	Yes	No

TUALATIN	17090010	GALES CREEK		1709001002	No	No	Yes
TUALATIN	17090010	DAIRY CREEK		1709001001	Yes	No	Yes
TUALATIN	17090010	ROCK CREEK/TUALATIN RIVER		1709001004	Yes	No	No
TUALATIN	17090010	LOWER TUALATIN RIVER		1709001005	No	No	No
TUALATIN	17090010	SCOGGINS CREEK		1709001003	Yes	No	Yes
UMATILLA	17070103	UMATILLA RIVER/MISSION CREEK		1707010303	Yes	Yes	No
UMATILLA	17070103	MEACHAM CREEK		1707010302	Yes	Yes	No
UMATILLA	17070103	UPPER UMATILLA RIVER		1707010301	Yes	Yes	No
UMATILLA	17070103	MCKAY CREEK		1707010305	Yes	Yes	No
UMATILLA	17070103	LOWER BUTTER CREEK		1707010310	Yes	No	No
UMATILLA	17070103	COLD SPRINGS CANYON		1707010312	Yes	No	No
UMATILLA	17070103	LOWER UMATILLA RIVER		1707010313	Yes	No	No
UMATILLA	17070103	SAND HOLLOW		1707010311	Yes	No	No
UMATILLA	17070103	UPPER BUTTER CREEK		1707010309	Yes	Yes	No
UMATILLA	17070103	STAGE GULCH		1707010308	No	No	No
UMATILLA	17070103	WILDHORSE CREEK		1707010304	No	No	No
UMATILLA	17070103	BIRCH CREEK		1707010306	Yes	Yes	No
UMATILLA	17070103	UMATILLA RIVER/ALKALI CANYON		1707010307	No	No	No
UMPQUA	17100303	ELK CREEK		1710030303	Yes	No	No
UMPQUA	17100303	MIDDLE UMPQUA RIVER		1710030304	Yes	Yes	Yes
UMPQUA	17100303	LAKE CREEK		1710030305	Yes	No	Yes
UMPQUA	17100303	UPPER SMITH RIVER		1710030306	Yes	No	Yes
UMPQUA	17100303	CALAPOOYA CREEK		1710030302	Yes	No	No
UMPQUA	17100303	UPPER UMPQUA RIVER		1710030301	Yes	No	No
UMPQUA	17100303	LOWER SMITH RIVER		1710030307	Yes	Yes	No
UMPQUA	17100303	LOWER UMPQUA RIVER		1710030308	Yes	Yes	Yes
UPPER CROOKED	17070304	CAMP CREEK		1707030402	Yes	Yes	No
UPPER CROOKED	17070304	UPPER NORTH FORK CROOKED RIVER		1707030403	Yes	Yes	No
UPPER CROOKED	17070304	DEEP CREEK		1707030404	No	Yes	No
UPPER CROOKED	17070304	BEAR CREEK		1707030407	Yes	Yes	No
UPPER CROOKED	17070304	PRINEVILLE RESERVOIR		1707030408	Yes	Yes	No
UPPER CROOKED	17070304	CROOKED RIVER ABOVE NORTH FORK		1707030401	Yes	Yes	No
UPPER CROOKED	17070304	LOWER NORTH FORK CROOKED RIVER		1707030405	Yes	Yes	No
UPPER CROOKED	17070304	UPPER CROOKED RIVER		1707030406	Yes	Yes	No
UPPER DESCHUTES	17070302	SELLERS CREEK		1707030204	Yes	Yes	No
UPPER DESCHUTES	17070302	CRESCENT CREEK		1707030202	Yes	Yes	Yes
UPPER DESCHUTES	17070302	LITTLE WALKER MOUNTAIN		1707030205	Yes	Yes	Yes
UPPER DESCHUTES	17070301	LOWER METOLIUS RIVER		1707030110	Yes	Yes	No
UPPER DESCHUTES	17070301	DESCHUTES RIVER/MCKENZIE CANYON		1707030107	Yes	Yes	No

UPPER DESCHUTES	17070301	SQUAW CREEK	1707030108	Yes	Yes	No
UPPER DESCHUTES	17070302	LOWER LITTLE DESCHUTES RIVER	1707030207	Yes	Yes	No
UPPER DESCHUTES	17070301	DESCHUTES RIVER/HAYSTACK	1707030111	Yes	Yes	No
UPPER DESCHUTES	17070301	DESCHUTES RIVER/FALL RIVER	1707030103	Yes	Yes	No
UPPER DESCHUTES	17070301	DESCHUTES RIVER/PILOT BUTTE	1707030104	Yes	Yes	No
UPPER DESCHUTES	17070301	TUMALO CREEK	1707030105	No	Yes	No
UPPER DESCHUTES	17070301	DESCHUTES RIVER/CHARLETON CREEK	1707030101	No	Yes	No
UPPER DESCHUTES	17070301	DEEP CANYON	1707030106	Yes	Yes	No
UPPER DESCHUTES	17070301	UPPER METOLIUS RIVER	1707030109	No	Yes	No
UPPER DESCHUTES	17070302	LONG PRAIRIE	1707030206	Yes	Yes	No
UPPER DESCHUTES	17070301	DESCHUTES RIVER/BROWNS CREEK	1707030102	No	Yes	No
UPPER DESCHUTES	17070302	MIDDLE LITTLE DESCHUTES RIVER	1707030203	Yes	Yes	No
UPPER DESCHUTES	17070302	UPPER LITTLE DESCHUTES RIVER	1707030201	Yes	Yes	Yes
UPPER GRANDE RONDE RIVER	17060104	GRANDE RONDE RIVER/MILL CREEK	1706010407	Yes	Yes	No
UPPER GRANDE RONDE RIVER	17060104	GRANDE RONDE RIVER/INDIAN CREEK	1706010409	No	Yes	No
UPPER GRANDE RONDE RIVER	17060104	LADD CREEK	1706010406	Yes	Yes	No
UPPER GRANDE RONDE RIVER	17060104	PHILLIPS CREEK/WILLOW CREEK	1706010408	Yes	Yes	No
UPPER GRANDE RONDE RIVER	17060104	GRANDE RONDE RIVER/FIVE POINTS CREEK	1706010404	Yes	Yes	No
UPPER GRANDE RONDE RIVER	17060104	GRANDE RONDE RIVER/CABIN CREEK	1706010411	Yes	Yes	No
UPPER GRANDE RONDE RIVER	17060104	CATHERINE CREEK	1706010405	Yes	Yes	No
UPPER GRANDE RONDE RIVER	17060104	MEADOW CREEK	1706010402	Yes	Yes	No
UPPER GRANDE RONDE RIVER	17060104	LOOKINGGLASS CREEK	1706010410	No	Yes	No
UPPER GRANDE RONDE RIVER	17060104	UPPER GRANDE RONDE RIVER	1706010401	Yes	Yes	No
UPPER GRANDE RONDE RIVER	17060104	GRANDE RONDE RIVER/BEAVER CREEK	1706010403	Yes	Yes	No
UPPER JOHN DAY	17070201	UPPER JOHN DAY RIVER	1707020106	Yes	Yes	No
UPPER JOHN DAY	17070201	UPPER MIDDLE JOHN DAY	1707020112	Yes	Yes	No
UPPER JOHN DAY	17070201	LOWER SOUTH FORK JOHN DAY	1707020101	Yes	Yes	No
UPPER JOHN DAY	17070201	MIDDLE SOUTH FORK JOHN DAY	1707020103	Yes	Yes	No
UPPER JOHN DAY	17070201	BEECH CREEK	1707020109	Yes	Yes	No
UPPER JOHN DAY	17070201	JOHN DAY RIVER/JOHNSON CREEK	1707020115	Yes	No	No
UPPER JOHN DAY	17070201	ROCK CREEK	1707020114	Yes	Yes	No
UPPER JOHN DAY	17070201	STRAWBERRY CREEK	1707020108	Yes	Yes	No
UPPER JOHN DAY	17070201	LOWER SOUTH FORK JOHN DAY	1707020105	Yes	Yes	No
UPPER JOHN DAY	17070201	MURDERERS CREEK	1707020104	Yes	Yes	No
UPPER JOHN DAY	17070201	FIELDS CREEK	1707020111	Yes	Yes	No
UPPER JOHN DAY	17070201	MOUNTAIN CREEK	1707020113	Yes	Yes	No
UPPER JOHN DAY	17070201	CANYON CREEK	1707020107	Yes	Yes	No
UPPER JOHN DAY	17070201	LAYCOCK CREEK	1707020110	Yes	Yes	No
UPPER KLAMATH LAKE	18010203	KLAMATH LAKE	1801020302	Yes	Yes	Yes

UPPER KLAMATH LAKE	18010203	FOURMILE CREEK	1801020303	No	Yes	No
UPPER KLAMATH LAKE	18010203	WOOD RIVER	1801020301	Yes	Yes	Yes
UPPER KLAMATH RIVER	18010206	SPENCER CREEK	1801020601	Yes	Yes	No
UPPER KLAMATH RIVER	18010206	COTTONWOOD CREEK	1801020607	Yes	Yes	No
UPPER KLAMATH RIVER	18010206	KLAMATH/COPCO	1801020603	Yes	No	Yes
UPPER KLAMATH RIVER	18010206	JENNY CREEK	1801020604	Yes	Yes	Yes
UPPER KLAMATH RIVER	18010206	WEST FORK BEAVER CREEK	1801020609	Yes	Yes	No
UPPER KLAMATH RIVER	18010206	KLAMATH RIVER/IRON GATE	1801020605	Yes	No	No
UPPER KLAMATH RIVER	18010206	MIDDLE UPPER KLAMATH RIVER	1801020602	Yes	No	Yes
UPPER MALHEUR	17050116	UPPER NORTH FORK MALHEUR RIVER	1705011611	Yes	Yes	No
UPPER MALHEUR	17050116	UPPER MALHEUR RIVER/WARM SPRINGS RESERVOIR	1705011607	Yes	No	No
UPPER MALHEUR	17050116	UPPER MALHEUR RIVER/JUNIPER BASIN CREEK	1705011614	Yes	No	No
UPPER MALHEUR	17050116	UPPER MALHEUR RIVER/GRIFFIN CREEK	1705011605	Yes	Yes	No
UPPER MALHEUR	17050116	LOWER SOUTH FORK MALHEUR RIVER	1705011610	Yes	No	No
UPPER MALHEUR	17050116	LOWER NORTH FORK MALHEUR RIVER	1705011613	Yes	No	No
UPPER MALHEUR	17050116	UPPER SOUTH FORK MALHEUR RIVER	1705011608	Yes	No	No
UPPER MALHEUR	17050116	WOLF CREEK	1705011602	Yes	Yes	No
UPPER MALHEUR	17050116	UPPER MALHEUR RIVER	1705011601	Yes	Yes	No
UPPER MALHEUR	17050116	PINE CREEK	1705011603	Yes	Yes	No
UPPER MALHEUR	17050116	STINKINGWATER CREEK	1705011604	Yes	No	No
UPPER MALHEUR	17050116	OTIS CREEK	1705011606	Yes	Yes	No
UPPER MALHEUR	17050116	CRANE CREEK	1705011609	Yes	No	No
UPPER MALHEUR	17050116	LITTLE MALHEUR RIVER	1705011612	Yes	Yes	No
UPPER QUINN	16040201	MC DERMITT CREEK	1604020102	Yes	No	No
UPPER QUINN	16040201	EAST FORK QUINN RIVER	1604020103	Yes	No	No
UPPER QUINN	16040201	OREGON CANYON CREEK	1604020101	Yes	No	No
UPPER ROGUE	17100307	UPPER ROGUE RIVER	1710030701	Yes	Yes	No
UPPER ROGUE	17100307	LITTLE BUTTE CREEK	1710030708	Yes	Yes	No
UPPER ROGUE	17100307	ROGUE RIVER/SHADY COVE	1710030707	Yes	No	No
UPPER ROGUE	17100307	TRAIL CREEK	1710030706	Yes	Yes	No
UPPER ROGUE	17100307	ROGUE RIVER/LOST CREEK	1710030703	Yes	Yes	No
UPPER ROGUE	17100307	SOUTH FORK ROGUE RIVER	1710030702	Yes	Yes	No
UPPER ROGUE	17100307	BIG BUTTE CREEK	1710030704	Yes	Yes	No
UPPER ROGUE	17100307	ELK CREEK/ROGUE RIVER	1710030705	Yes	Yes	No
UPPER WILLAMETTE	17090003	LUCKIAMUTE RIVER	1709000306	Yes	No	Yes
UPPER WILLAMETTE	17090003	LONG TOM RIVER	1709000301	Yes	Yes	Yes
UPPER WILLAMETTE	17090003	CALAPOOIA RIVER	1709000303	Yes	Yes	No

UPPER WILLAMETTE	17090003	MUDDY CREEK	1709000302	Yes	No	No
UPPER WILLAMETTE	17090003	OAK CREEK	1709000304	No	No	No
UPPER WILLAMETTE	17090003	MARYS RIVER	1709000305	Yes	Yes	Yes
WALLA WALLA	17070102	UPPER WALLA WALLA RIVER	1707010201	Yes	Yes	No
WALLA WALLA	17070102	MILL CREEK	1707010202	No	Yes	No
WALLA WALLA	17070102	COTTONWOOD CREEK	1707010208	No	No	No
WALLA WALLA	17070102	PINE CREEK	1707010209	No	No	No
WALLA WALLA	17070102	LOWER WALLA WALLA RIVER	1707010211	Yes	No	No
WALLOWA RIVER	17060105	MINAM RIVER	1706010505	Yes	Yes	No
WALLOWA RIVER	17060105	BEAR CREEK	1706010504	No	Yes	No
WALLOWA RIVER	17060105	MIDDLE WALLOWA RIVER	1706010503	No	Yes	No
WALLOWA RIVER	17060105	UPPER WALLOWA RIVER	1706010501	No	Yes	No
WALLOWA RIVER	17060105	LOWER WALLOWA RIVER	1706010506	Yes	Yes	No
WALLOWA RIVER	17060105	LOSTINE RIVER	1706010502	No	Yes	No
WARNER LAKES	17120007	COLEMAN CREEK	1712000702	Yes	No	No
WARNER LAKES	17120007	LAST CHANCE LAKES	1712000708	Yes	No	No
WARNER LAKES	17120007	CAMPBELL LAKE	1712000706	Yes	No	No
WARNER LAKES	17120007	RABBIT CREEK	1712000707	Yes	No	No
WARNER LAKES	17120007	CRUMP LAKE	1712000703	Yes	No	No
WARNER LAKES	17120007	HONEY/FISH CREEK	1712000705	Yes	Yes	No
WARNER LAKES	17120007	DEEP CREEK	1712000704	Yes	Yes	No
WARNER LAKES	17120007	TWENTYMILE CREEK	1712000701	Yes	Yes	No
WILLIAMSON	18010201	WILLIAMSON RIVER ABOVE KLAMATH MARSH	1801020101	No	Yes	No
WILLIAMSON	18010201	WEST OF KLAMATH MARSH	1801020104	No	Yes	No
WILLIAMSON	18010201	NORTHWEST OF KLAMATH LAKE	1801020103	No	Yes	Yes
WILLIAMSON	18010201	WILLIAMSON RIVER BELOW KLAMATH MARSH	1801020105	No	Yes	Yes
WILLIAMSON	18010201	KLAMATH MARSH/JACK CREEK	1801020102	No	Yes	No
WILLOW	17070104	RHEA CREEK	1707010403	Yes	Yes	No
WILLOW	17050119	COW CREEK	1705011903	Yes	No	No
WILLOW	17070104	EIGHTMILE CANYON	1707010404	Yes	No	No
WILLOW	17070104	MIDDLE WILLOW CREEK	1707010402	No	No	No
WILLOW	17050119	SOUTH WILLOW CREEK	1705011901	Yes	Yes	No
WILLOW	17050119	UPPER WILLOW CREEK	1705011902	Yes	No	No
WILLOW	17050119	WEST TUB MOUNTAIN RESERVOIR	1705011905	Yes	No	No
WILLOW	17050119	MIDDLE WILLOW CREEK	1705011904	Yes	No	No
WILLOW	17070104	UPPER WILLOW CREEK	1707010401	Yes	Yes	No
WILLOW	17070104	LOWER WILLOW CREEK	1707010405	Yes	No	No
WILLOW	17050119	LOWER WILLOW CREEK	1705011906	Yes	No	No
WILSON/TRASK/NESTUCCA	17100203	NESTUCCA RIVER	1710020302	Yes	Yes	Yes

WILSON/TRASK/NESTUCCA	17100203	TILLAMOOK BAY	1710020308	No	No	Yes
WILSON/TRASK/NESTUCCA	17100203	LITTLE NESTUCCA RIVER	1710020301	Yes	Yes	Yes
WILSON/TRASK/NESTUCCA	17100203	TRASK RIVER	1710020304	Yes	No	Yes
WILSON/TRASK/NESTUCCA	17100203	TILLAMOOK RIVER	1710020303	Yes	Yes	Yes
WILSON/TRASK/NESTUCCA	17100203	WILSON RIVER	1710020305	Yes	No	Yes
WILSON/TRASK/NESTUCCA	17100203	KILCHIS RIVER	1710020306	Yes	No	Yes
WILSON/TRASK/NESTUCCA	17100203	SPRING CREEK/SAND LAKE/NESKOWIN CREEK FRONTAL	1710020309	Yes	Yes	No
WILSON/TRASK/NESTUCCA	17100203	MIAMI RIVER	1710020307	No	No	Yes
YAMHILL	17090008	WILLAMINA CREEK	1709000802	Yes	Yes	Yes
YAMHILL	17090008	MILL CREEK/SOUTH YAMHILL RIVER	1709000803	Yes	Yes	No
YAMHILL	17090008	SALT CREEK/SOUTH YAMHILL RIVER	1709000805	Yes	No	No
YAMHILL	17090008	YAMHILL RIVER	1709000807	No	No	No
YAMHILL	17090008	UPPER SOUTH YAMHILL RIVER	1709000801	Yes	Yes	No
YAMHILL	17090008	LOWER SOUTH YAMHILL RIVER	1709000804	Yes	No	No
YAMHILL	17090008	NORTH YAMHILL RIVER	1709000806	Yes	No	No

