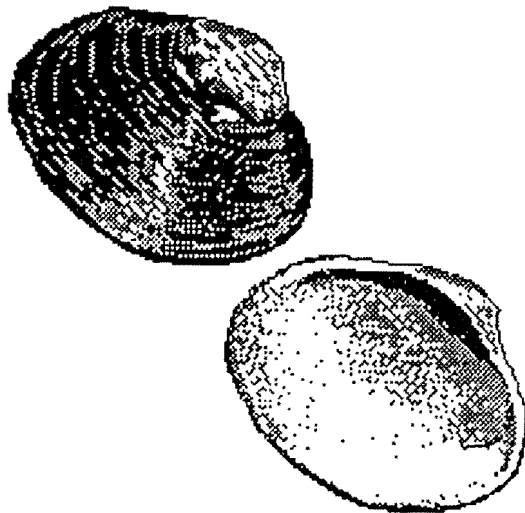


OREGON DEPARTMENT
OF
FISH AND WILDLIFE

BAY CLAM
DATA SERIES REPORT

1986



1986 BAY CLAM DATA SERIES REPORT

by

Thomas F. Gaumer

Oregon Department of Fish and Wildlife
Marine Region
Newport, Oregon

March 1990

CONTENTS

	<u>Page</u>
INTRODUCTION.....	1
RECREATIONAL CLAM FISHERY.....	1
COMMERCIAL CLAM HARVEST.....	4
SPECIAL STUDIES.....	5
Hatchery Stock Enhancement.....	5
Nehalem Bay.....	5
Tillamook Bay.....	5
Yaquina Bay.....	6
Coos Bay.....	7
Natural Recruitment Studies.....	7
Yaquina Bay.....	7
SIGN REPLACEMENT.....	8
ACKNOWLEDGMENTS.....	8
APPENDIX.....	9

TABLES

<u>Number</u>		<u>Page</u>
1	Annual summary of recreational interview data; Garibaldi Flat, Tillamook Bay.....	10
2	Annual summary of recreational interview data; Bay Ocean, Tillamook Bay.....	11
3	Annual summary of recreational interview data; Boat Basin, Tillamook Bay.....	12
4	Annual summary of recreational interview data; Happy Camp, Netarts Bay.....	13
5	Annual summary of recreational interview data; Cape Lookout Sand Spit, Netarts Bay.....	14
6	Annual summary of recreational interview data; Little Nestucca Flat, Nestucca Bay.....	15
7	Annual summary of recreational interview data; Bridge Bed, Yaquina Bay.....	16
8	Annual summary of recreational interview data; Breakwater Bed, Yaquina Bay.....	17
9	Annual summary of recreational interview data; Idaho Point, Yaquina Bay.....	18
10	Annual summary of recreational interview data; Northwest Gas Plant, Yaquina Bay.....	19
11	Annual summary of recreational interview data; Coquille Point, Yaquina Bay.....	20
12	Annual summary of recreational interview data; Critser's Island, Yaquina Bay.....	21
13	Annual summary of recreational interview data; North Bank Softshell, Yaquina Bay.....	22
14	Annual summary of recreational interview data; North Shore, Alsea Bay.....	23
15	Annual summary of recreational interview data; Bayshore, Alsea Bay.....	24
16	Annual summary of recreational interview data; Breakwater, Alsea Bay.....	25
17	Annual summary of recreational interview data; Softshell, Alsea Bay.....	26
18	Annual summary of recreational interview data; North Fork, Siuslaw Bay.....	27

TABLES (continued)

<u>Number</u>		<u>Page</u>
19	Annual summary of recreational interview data; Bolin Island, Umpqua Bay.....	28
20	Annual summary of recreational interview data; Hanson's Marina - South Slough, Coos Bay.....	29
21	Annual summary of recreational interview data; Charleston Triangle, Coos Bay.....	30
22	Annual summary of recreational interview data; Charleston Flat, Coos Bay.....	31
23	Annual summary of recreational interview data; Peterson Flat, Coos Bay.....	32
24	Annual summary of recreational interview data; Pigeon Point, Coos Bay.....	33
25	Annual summary of recreational interview data; Sitka Flat, Coos Bay.....	34
26	Annual summary of recreational interview data; Empire Flat, Coos Bay.....	35
27	Annual summary of recreational interview data; North Spit, Coos Bay.....	36
28	Annual summary of recreational interview data; Clam Island, Coos Bay.....	37
29	Annual summary of recreational interview data; Bandon Softshell, Coquille Bay.....	38
30	Annual summary of recreational interview data; all estuaries combined.....	39
31	Peak counts of clam diggers.....	40
32	Summary of pounds of bay clams reported commercially harvested in Oregon by species, 1970-86.....	42
33	Summary of pounds of bay clams reported commercially harvested in major Oregon estuaries, 1970-86.....	43
34	Summary of experimental Manila littleneck clam plants in Tillamook Bay, 1971-86.....	47
35	Test plots and substrate types for Manila clam plants, Yaquina Bay, 1986.....	50
36	Population and biomass estimates (95% CI) for gaper clams in Yaquina Bay, Area 2, 1975-86.....	54

FIGURES

<u>Number</u>		<u>Page</u>
1	Size composition of recreationally harvested by clams, all bays combined, 1975-86.	41
2	Age composition of commercial subtidal native littleneck clam harvest, Nehalem Bay, 1984-86.	44
3	Age composition of commercial subtidal gaper clam harvest, Pigeon Point, Coos Bay, 1983-86.	45
4	Location of Manila littleneck clams released in Nehalem Bay, 1986.	46
5	Location of Manila littleneck clams released in Yaquina Bay, 1986.	49
6	Location of Manila littleneck clams released in Coos Bay, 1986.	51
7	Subtidal clam survey area in Yaquina Bay, 1986.....	52
8	Percent of 1975 year class gaper clams in subtidal samples, Yaquina Bay, area 2, 1975-86.	53

1986 BAY CLAM DATA SERIES REPORT

INTRODUCTION

This report summarizes the results of our bay clam studies in 1986. Activities summarized include recreational and commercial clam fishery monitoring, hatchery stock enhancement, and natural recruitment studies. This report is presented as a series of tables and figures with a minimum of discussion; other reports will evaluate the data presented here. The tables and figures included give a historical overview of clam harvesting activities and are presented in a manner to allow future analysis to show trends or changes in stock status and fishing activities. This report is intended primarily to be an internal document, to be used as a reference by the shellfish staff.

RECREATIONAL CLAM FISHERY

Recreational clam digger interviews are conducted annually on each of the major clam harvesting tideflats of the Tillamook, Netarts, Nestucca, Yaquina, Alsea, Siuslaw, Coos, and Coquille estuaries. Interviews are usually conducted by two shellfish staff members. A count of diggers is made on each tideflat at low tide; this provides a peak digger count for that day. Currently, an effort is made to visit each tideflat at least two times per season, in the spring and again in midsummer. This is about half of the sampling effort that we expended annually from 1975 to 1984 to collect recreational use data.

We attempt to measure and age a minimum of 100 clams of each species for each tideflat. We measure the height of the cockle clam and the length of the butter, gaper, littleneck, and

softshell clams. We age the various species of clams by counting annulli on the shell surface. The total number of annual checks is back-calculated to give year of recruitment.

Interview data collected included catch/effort, digger origin, species, age, and length composition. These data are presented for each tideflat in Appendix Tables 1-29. Table 30 summarizes the recreational activities presented in Tables 1-29 and Table 31 shows the peak counts of clam diggers taken at low tide for each of the surveyed tideflats.

In 1986, we interviewed 1,392 clam diggers that expended 2,129 hours of effort to harvest 24,691 clams (Table 30). The clam diggers averaged 17.7 clams/trip or 11.6 clams/hour. Digging success was slightly better in 1986 than in 1985 when 16.3 clams/trip were taken. This increase was influenced by better digging success on several major clam beds in Yaquina and Siuslaw bays. Since 1977, when the Commission approved a reduction in bag limit from 36 to 20, clam digger harvest has ranged between 14.7 and 18.8 clams/trip. In 1976, prior to the reduced bag limit, clam diggers averaged 20.9 clams/trip.

As in previous years, most clam diggers traveled some distance to harvest clams. In 1986, 36.9% of the diggers were local county residents, 56.7% were from Oregon but living outside the county of harvest, and 6.4% were out-of-state residents (Table 30). These figures were generally the same as in 1985. Since 1976, there has been a gradual increase in the percentage of local diggers participating in the fishery, whereas the percentage of out-of-state residents has remained nearly the same.

The cockle clam was the most frequently observed species in the recreational fishery representing 40.7% of the 1986 harvest (Table 30). Gaper, softshell, butter, and littleneck clams comprised 20.8, 17.1, 13.3, and 6.7% of the bag, respectively. These values fluctuate annually but the general trend shows a gradual decline in the gaper and softshell harvest and an increase in the take of cockle and butter clams. The reduced occurrence of gaper clams can be partially attributed to poor recruitment of this species in a number of our more popular clam beds, especially at Happy Camp in Netarts Bay and the tideflat under the Yaquina Bay bridge.

Length composition data collected for each species shows a gradual increase in mean size for the gaper clam since 1982, the softshell since 1984, and the butter clam since 1985 (Table 30). Both the cockle and littleneck clams showed a decrease in mean size since 1985. Data collected on length composition since 1979 revealed only minor variations in overall mean size for each species (Figure 1). Gaper, softshell, butter, cockle, and littleneck clams averaged 111.6 mm, 91.0 mm, 79.8 mm, 63.3 mm, and 47.7 mm in 1986, respectively.

Changes in digging effort through time as reflected by peak digger counts revealed a general increase in digging effort from 1985 for most of the surveyed tideflats (Table 31). The largest increase in peak digger counts was observed for Garibaldi Flat on Tillamook Bay (118 to 380 diggers). There was no apparent reason observed for this increase in digging activity, although razor clam digging in Clatsop County was poor in 1986 compared to 1985, and some of those diggers might have traveled instead to Tillamook Bay to dig bay clams.

COMMERCIAL CLAM HARVEST

In 1986, we issued 65 permits to commercial fishermen to harvest bay clams. Of this total 32 reported landing 82,609 lb of clams (Table 32). This is a slightly lower harvest level than 1985 when 40 clam diggers reported landing 99,254 lb of clams. Of the total clams landed in 1986, 38.2% (31,681 lb) were cockles. Tillamook Bay was the major producer with 78.2% (24,781 lb) of the total cockle harvest. Other clams harvested coastwide were littlenecks (27,487 lb), gapers (17,021 lb), softshells (3,558 lb), and butters (2,862 lb). The continuous decline in harvest of gaper clams since 1982, when 106,440 lb were taken, again illustrates poor recruitment of this species in several of our bays.

Nehalem Bay produced the most clams in 1986 with 30,545 lb reported (Table 33). Tillamook and Coos bays produced 28,737 lb, and 19,557 lb, respectively. Netarts, Yaquina, Coquille, and Siuslaw bays produced minor poundages of clams.

We collected age and length composition data for native littleneck clams in Nehalem Bay and gaper clams in Coos Bay. Data were collected for these two species in these two bays since they have been the focus of an intense subtidal commercial fishery for a number of years. Figure 2 shows that the 1981 and 1982 year-class littleneck clams dominated the Nehalem Bay commercial harvest in 1986. The harvested clams averaged 41.8 mm in length. In 1985, the clams averaged 42.6 mm in length. In 1986, gaper clams harvested in Coos Bay were primarily of the 1974 and 1975 year-classes and averaged 130.8 mm in length (Figure 3). Gapers harvested in 1985 also averaged 130.8 mm.

Coastwide, littleneck clams brought an average of \$1.03/lb to the fishermen. Gapers, cockles, butters, and softshells averaged \$0.21/lb, \$0.60/lb, \$0.54/lb, and \$0.89/lb, respectively.

SPECIAL STUDIES

Hatchery Stock Enhancement

Nehalem Bay

In September 1986, we introduced an estimated 4,000 Manila clams into a subtidal test plot in Nehalem Bay (Figure 4). The clams averaged 10.0 mm in length and were planted in the channel at a density of 83/sq ft; water depth was 20 ft below MLLW. The clams were covered with 1/2-in. mesh Vexar netting to exclude predators. Immediately after leaving the newly released clams we observed a large school of perch swimming above the test plot and many of the fish were seen pushing the mesh down to reach the clams. Later observations revealed no survival of the released clams.

Tillamook Bay

No Manila clams were planted in the bay in 1986. Clams planted in test plots in 1984 and 1985 were sampled for growth and survival. Table 34 summarizes the results of our Manila clam plants in Tillamook Bay since 1971. Of particular interest was the difference in survival of clams placed under Vexar netting as compared to uncovered clams. Covered clams showed a 15% survival of juvenile clams, 15 months after release, as compared to 1% survival for clams planted with no protection. Clams planted as adults in 1985 had survival rates ranging from 78 to 97%, 13

months after release. These clams were planted without protection of Vexar netting.

Yaquina Bay

Manila clam set, planted under Vexar netting near King Slough in 1985, revealed a survival rate of 49% one year later. These clams, 18.1 mm when planted, averaged 35.3 mm in length.

During 1986, we established 16 new test plots in Yaquina Bay to test for growth and survival of laboratory produced Manila clams in different sediment regimes at the same tidal and temperature levels (Figure 5). Ten of the test plots were prepared with a variety of introduced substrate types (Table 35). Each test plot measured 6 ft x 6 ft and were placed end to end in a row parallel to the direction of the channel. Each plot was bordered with a 1 x 6 lumber frame and each side was secured with several stakes driven into the substrate. Oregon Oyster Company provided the cleaned, seasoned oyster shell. A portion of the shell was ground up by placing it on the pavement and driving a truck back and forth over it. Morse Bros. Sand and Gravel in Toledo donated the river washed pea gravel. We placed about 2 in. of introduced material over the natural substrate surface of each prepared test plot. Clams for each test plot were mixed with dry sand to facilitate ease of scattering the set uniformly. Without the dry sand, the young, moist, clams had a tendency to stick together. Each test plot was set up in duplicate and half of these were covered with Vexar netting. The Vexar netting was stretched over the plots and secured with a strip of lathe nailed to the 1 x 6 border. Six of the test plots were left as natural substrates. We released a total of

145,000 clams, averaging 6.7 mm in length, in the test plots at a density of 100/sq ft.

Coos Bay

We sampled the test plots planted in 1984 and 1985 and found 10% of the 1984 release and 100% of the 1985 release had survived. The clams planted in 1984 averaged 31.0 mm in length when released, whereas the clams planted in 1985 averaged 12.2 mm in length. Ten months after release, the clams planted in 1985 averaged 23.2 mm in length. These clams were covered with Vexar netting.

We established five new natural substrate test plots in South Slough of Coos Bay in 1986 and planted an estimated 133,300 Manila clams (Figure 6). Clams in plot numbers 5 and 8 were covered with Vexar netting.

NATURAL RECRUITMENT STUDIES

Yaquina Bay

We collected 20 subtidal dredge samples from an 18.4 acre area in Yaquina Bay in September 1986 to determine year-class strength, recruitment success, and population and biomass estimates (Figure 7). Each sample covered 1 sq ft of surface area; depth of samples averaged 12-14 in.

The 20 samples produced 148 gaper clams (7.4/sq ft) that averaged 102.4 mm in length. Some evidence of recruitment of gaper clams was observed; 10.7% of the clams were of the 1986 year-class. The 1975 year-class continued to dominate the standing crop comprising 63.1% of the 1986 sample (Figure 8). We estimated that 5.9 million gapers, weighing 4.4 million lb, inhabited the area (Table 36).

SIGN REPLACEMENT

In 1986, the shellfish staff continued a coastwide project of repairing or replacing regulation signs. We currently are maintaining 187 signs along the Oregon coast.

ACKNOWLEDGMENTS

I wish to thank Darrell Demory, Jean McCrae, Neil Richmond, Mark Saelens and Rick Starr for their assistance in gathering the data that was used in this report.

APPENDIX

Table 1. Annual summary of recreational interview data; Garibaldi Flat, Tillamook Bay.

	1962	1963	1965	1971	1975	1976	1977 ¹	1978	1979	1980	1981	1982	1983	1984	1985	1986
No. Diggers Sampled	149	758	319	13,048	104	207	252	239	597	456	359	219	132	200	107	290
No. Clams Sampled	3,296	19,053	8,414	389,946	2,472	4,825	4,647	4,631	11,104	8,728	6,558	4,249	2,471	3,729	2,128	5,598
No. Digger Hours	-	-	-	20,439	-	283	336	261	715	549	443	220	158	243	143	311
Hours/trip	-	-	-	1.6	-	1.4	1.3	1.1	1.2	1.2	1.2	1.3	1.2	1.2	1.3	1.1
Clams/trip	22.1	25.1	22.9	29.9	23.8	23.3	18.4	19.4	18.6	19.1	18.3	19.4	18.7	18.7	19.9	19.3
Clams/hour	-	-	-	19.1	-	17.0	13.8	17.7	15.5	15.9	14.0	14.6	15.6	15.4	14.9	18.0
Digger Origin (%)																
Local	-	-	38.0	21.0	-	32.9	27.8	33.1	30.2	22.4	27.6	38.8	37.7	30.0	28.0	17.9
State	-	-	62.0	73.0	-	57.0	57.3	55.2	64.7	72.6	63.5	57.1	46.9	67.5	66.4	78.6
Non-state	-	-	-	-	-	-	-	-	-	-	-	4.1	15.4	2.5	5.6	3.4
Species Comp. (%)																
Butter	31.9	27.0	-	16.3	20.7	18.2	10.5	11.5	13.5	28.7	42.8	45.8	39.7	38.8	39.5	32.9
Cockle	38.2	45.0	-	16.8	43.4	28.5	46.7	66.6	64.0	46.5	24.2	27.4	27.4	28.5	43.2	51.0
Gaper	6.3	7.0	-	5.4	5.3	18.5	17.2	7.1	9.6	7.1	5.7	6.0	4.5	0.7	1.8	1.0
Littleneck	23.6	21.0	-	60.8	29.7	34.7	24.9	14.7	12.7	17.7	27.2	20.8	28.4	32.1	15.4	15.1
Softshell	-	-	-	-	-	-	-	-	-	-	-	-	-	-	-	-
Clams/trip																
Butter	7.1	6.8	-	5.0	4.9	4.2	1.9	2.2	2.5	5.5	7.8	8.9	7.4	7.2	7.9	6.3
Cockle	8.4	11.3	-	4.9	10.3	6.6	8.6	12.9	11.9	8.9	4.4	5.3	5.1	5.3	8.6	9.9
Gaper	1.4	1.8	-	1.6	1.3	4.3	3.2	1.4	1.8	1.4	1.4	1.2	0.9	0.1	0.4	0.2
Littleneck	5.2	5.3	-	18.4	7.0	8.1	4.6	2.8	2.4	3.4	5.0	4.0	5.3	6.0	3.1	2.9
Softshell	-	-	-	-	-	-	-	-	-	-	-	-	-	-	-	-
Clams/hour																
Butter	-	-	-	3.2	-	3.1	1.5	2.0	2.1	4.6	6.3	6.7	6.2	6.0	5.9	5.9
Cockle	-	-	-	3.1	-	4.9	6.5	11.8	9.9	7.4	3.6	4.0	4.3	4.4	6.5	9.2
Gaper	-	-	-	1.1	-	3.2	2.4	1.3	1.5	1.1	0.9	0.9	0.7	0.1	0.3	0.2
Littleneck	-	-	-	11.7	-	5.9	3.5	2.6	2.0	2.8	4.0	3.0	4.4	4.9	2.3	2.7
Softshell	-	-	-	-	-	-	-	-	-	-	-	-	-	-	-	-
Size Comp. (\bar{x} size)																
Butter	-	-	-	-	77.3	81.6	83.8	83.0	72.3	64.8	70.6	70.3	68.8	78.4	71.4	75.5
Cockle	-	-	-	-	63.9	64.3	55.9	55.2	60.9	55.0	56.9	60.1	54.0	52.8	58.9	58.7
Gaper	-	-	-	-	67.5	56.8	69.3	82.0	84.2	90.2	91.3	114.1	107.9	108.0	106.9	99.4
Littleneck	-	-	-	-	36.7	36.8	39.4	38.2	38.5	36.5	39.5	38.0	37.0	38.3	39.5	39.9
Softshell	-	-	-	-	-	-	-	-	-	-	-	-	-	-	-	-
No. Clams Measured																
Butter	-	-	-	-	219	536	394	145	555	304	413	379	481	203	241	231
Cockle	-	-	-	-	290	978	1,517	637	1,501	535	254	389	407	240	267	360
Gaper	-	-	-	-	74	349	538	84	327	111	81	7	21	2	17	5
Littleneck	-	-	-	-	297	518	862	233	171	187	251	392	461	236	131	322
Softshell	-	-	-	-	-	-	-	-	-	-	-	-	-	-	-	-

¹ Regulation change in bag limit; effective January 1, 1977.

Table 2. Annual summary of recreational interview data; Bay Ocean, Tillamook Bay.

	1971	1976	1977 ¹	1978	1979	1980	1981	1982	1983	1984	1985	1986
No. Diggers Sampled	10,379	94	170	38	79	119	34	13	11	11	17	31
No. Clams Sampled	216,728	2,242	2,664	574	1,063	1,465	314	1	63	161	314	557
No. Digger Hours	16,156	171	333	70	146	216	58	17	16	12	23	38
Hours/trip	1.6	1.8	2.0	1.9	1.8	1.8	1.7	1.3	1.6	1.1	1.4	1.2
Clams/trip	20.9	23.9	15.7	15.1	13.5	12.3	9.2	<0.1	5.7	14.6	18.5	18.0
Clams/hour	13.4	13.1	8.0	8.2	7.3	6.8	5.5	<0.1	3.9	13.4	13.7	14.7
Digger Origin (%)												
Local	21.0	20.2	14.7	13.2	10.1	21.8	20.6	15.4	-	18.2	11.8	25.8
State	73.0	74.5	79.0	76.3	89.9	73.1	70.6	84.6	72.7	81.8	88.2	64.5
Non-state	16.0	5.3	6.5	10.5	-	5.0	8.8	-	27.3	-	-	9.7
Species Comp. (%)												
Butter	<0.1	0.1	0.6	-	-	0.4	-	-	-	-	21.7	27.8
Cockle	85.0	85.8	78.5	87.2	91.4	89.6	74.2	-	95.2	100.0	45.2	49.2
Gaper	8.8	12.3	17.5	12.2	8.0	7.1	1.3	-	-	-	33.1	20.1
Littleneck	1.3	0.1	0.8	-	0.1	0.5	1.3	-	-	-	-	2.9
Softshell	-	-	-	-	-	-	-	100.0	-	-	-	-
Clams/trip												
Butter	<0.1	<0.1	0.1	-	-	<0.1	-	-	-	-	4.0	5.0
Cockle	17.1	20.5	12.3	13.2	12.3	11.0	6.9	-	5.5	14.6	8.4	8.8
Gaper	1.8	2.9	2.7	1.8	1.1	0.9	0.1	-	-	-	6.1	3.6
Littleneck	0.3	<0.1	0.1	-	<0.1	<0.1	0.1	-	-	-	-	0.5
Softshell	-	-	-	-	-	-	-	<0.1	-	-	-	-
Clams/hour												
Butter	<0.1	<0.1	<0.1	-	-	<0.1	-	-	-	-	3.0	4.1
Cockle	11.0	11.3	6.3	7.1	6.7	6.1	4.1	-	3.8	13.4	6.2	7.2
Gaper	1.1	1.6	1.4	1.0	0.6	0.5	0.1	-	-	-	4.5	2.9
Littleneck	0.2	<0.1	0.1	-	<0.1	0.1	-	-	-	-	-	0.4
Softshell	-	-	-	-	-	-	-	<0.1	-	-	-	-
Size Comp. (\bar{x} size)												
Butter	-	-	-	-	-	-	-	-	-	-	78.2	75.4
Cockle	-	66.0	66.1	64.0	68.4	71.2	60.6	-	67.6	69.8	68.6	71.0
Gaper	-	110.6	107.9	104.7	109.3	106.2	105.5	-	-	95.0	110.6	101.4
Littleneck	-	-	-	-	42.0	-	37.0	-	-	38.0	-	46.0
Softshell	-	-	-	-	-	-	-	-	-	-	-	-
No. Clams Measured												
Butter	-	-	-	-	-	-	-	-	-	-	17	165
Cockle	-	1,075	781	318	525	277	213	-	59	77	122	182
Gaper	-	224	118	68	79	44	4	-	-	24	70	98
Littleneck	-	-	-	-	-	-	4	-	-	2	-	16
Softshell	-	-	-	-	-	-	-	1	-	-	-	-

¹ Regulation change in bag limit; effective January 1, 1977.

Table 3. Annual summary of recreational interview data; Boat Basin, Tillamook Bay.

	1983	1984	1985	1986
No. Diggers Sampled	9	57	14	27
No. Clams Sampled	224	1,033	273	539
No. Digger Hours	22	78	21	57
Hours/trip	2.4	1.4	1.5	2.1
Clams/trip	24.9	18.1	19.5	20.0
Clams/hour	10.4	13.3	13.3	9.5
Digger Origin (%)				
Local	22.2	21.1	50.0	7.4
State	77.8	71.9	50.0	92.6
Non-state	-	7.0	-	-
Species Comp. (%)				
Butter	24.6	17.8	-	25.6
Cockle	34.8	28.3	98.9	73.1
Gaper	8.5	26.9	1.1	1.3
Littleneck	32.1	27.0	-	-
Softshell	-	-	-	-
Clams/trip				
Butter	6.1	3.2	-	5.1
Cockle	8.7	5.1	19.3	14.6
Gaper	2.1	4.9	0.2	0.3
Littleneck	8.0	4.9	-	-
Softshell	-	-	-	-
Clams/hour				
Butter	2.6	2.4	-	2.6
Cockle	3.6	3.8	13.2	6.9
Gaper	0.9	3.6	0.1	0.1
Littleneck	3.3	3.6	-	-
Softshell	-	-	-	-
Size Comp. (\bar{x} size)				
Butter	-	75.6	-	97.2
Cockle	69.2	60.5	101.7	70.4
Gaper	98.8	98.4	105.5	-
Littleneck	37.8	42.1	-	-
Softshell	-	-	-	-
No. Clams Measured				
Butter	-	47	-	21
Cockle	78	59	205	39
Gaper	18	14	2	-
Littleneck	67	28	-	-
Softshell	-	-	-	-

Table 4. Annual summary of recreational interview data; Happy Camp, Netarts Bay.

	1971	1975	1976	1977 ¹	1978	1979	1980	1981	1982	1983	1984	1985	1986
No. Diggers Sampled	5,106	18	141	187	146	222	106	71	168	280	84	99	60
No. Clams Sampled	85,230	164	1,709	2,727	1,747	2,823	1,293	991	2,020	2,994	1,009	1,010	579
No. Digger Hours	6,613	-	193	254	149	204	68	67	151	290	84	124	92
Hours/trip	1.3	-	1.4	1.4	1.0	0.9	0.6	0.9	0.9	1.0	1.0	1.3	1.5
Clams/trip	16.7	9.1	12.1	14.6	12.0	12.7	12.2	12.9	12.0	10.7	12.0	10.2	9.7
Clams/hour	12.9	-	8.9	10.7	11.7	13.8	19.1	14.8	13.4	10.3	12.0	8.1	6.3
Digger Origin (%)													
Local	17.6	-	29.1	14.9	11.0	28.4	17.9	40.3	48.2	22.5	29.8	32.3	31.7
State	74.8	-	66.0	75.9	71.2	59.9	73.6	50.6	44.0	72.9	64.3	53.5	66.7
Non-state	7.6	-	5.0	9.1	17.8	11.7	8.5	9.1	7.7	4.6	6.0	14.1	1.7
Species Comp. (%)													
Butter	2.6	47.1	20.8	9.2	5.8	7.7	5.4	13.7	5.0	0.7	3.7	4.0	7.9
Cockle	1.0	-	0.1	21.9	-	-	0.1	-	<0.1	0.1	4.0	0.4	2.1
Gaper	95.7	36.6	73.6	62.5	91.0	90.3	92.5	82.7	94.3	98.5	89.5	93.6	84.6
Littleneck	0.8	15.9	5.3	5.4	3.1	0.2	2.0	3.4	0.6	0.8	2.9	2.1	5.4
Softshell	-	-	-	-	-	-	-	-	-	-	-	-	-
Clams/trip													
Butter	0.4	3.3	2.5	1.3	0.7	1.0	0.7	1.8	0.6	0.1	0.4	0.4	0.8
Cockle	0.2	-	<0.1	3.2	-	-	<0.1	-	<0.1	<0.1	0.5	<0.1	0.2
Gaper	16.0	4.3	8.9	9.1	10.9	11.5	11.3	10.6	11.3	10.5	10.8	9.5	8.2
Littleneck	0.1	1.4	0.6	0.8	0.4	0.2	0.2	0.4	0.1	0.1	0.4	0.2	0.5
Softshell	-	-	-	-	-	-	-	-	-	-	-	-	-
Clams/hour													
Butter	0.3	-	1.8	1.0	0.7	1.1	1.0	2.0	0.7	0.1	0.4	0.3	0.5
Cockle	0.1	-	<0.1	2.3	-	-	<0.1	-	<0.1	<0.1	0.5	<0.1	0.1
Gaper	12.3	-	6.5	6.7	10.7	12.5	17.7	12.3	12.7	10.2	10.8	7.6	5.3
Littleneck	0.1	-	0.5	0.6	0.4	0.3	0.4	0.5	0.1	0.1	0.4	0.2	0.3
Softshell	-	-	-	-	-	-	-	-	-	-	-	-	-
Size Comp. (\bar{x} size)													
Butter	-	102.8	100.2	103.0	103.2	107.2	105.9	109.7	102.5	82.0	101.8	103.5	105.2
Cockle	-	-	-	-	-	-	-	-	-	31.0	-	54.0	47.6
Gaper	93.2	112.1	96.3	86.1	87.5	92.1	93.6	98.9	97.7	101.9	100.3	106.6	111.7
Littleneck	-	65.3	67.6	70.0	70.1	73.6	66.7	71.3	70.7	55.8	70.2	67.2	65.6
Softshell	-	-	-	-	-	-	-	-	-	-	-	-	-
No. Clams Measured													
Butter	-	66	219	-	-	-	24	109	62	6	32	20	45
Cockle	-	190	-	-	-	-	-	-	-	1	-	1	8
Gaper	282	190	643	557	921	417	468	454	565	338	240	436	405
Littleneck	-	43	99	28	54	34	3	22	9	4	29	12	28
Softshell	-	-	-	-	-	-	-	-	-	-	-	-	-

¹ Regulation change in bag limit; effective January 1, 1977.

Table 5. Annual summary of recreational interview data; Cape Lookout Sand Spit, Netarts Bay.

	1971	1975	1976	1977 ¹	1978	1979	1980	1981	1982	1983	1984	1985	1986
No. Diggers Sampled	6,473	43	76	509	72	85	63	80	56	118	71	52	42
No. Clams Sampled	115,811	1,038	2,433	9,293	1,324	1,560	1,074	1,397	1,029	2,174	1,362	1,040	819
No. Digger Hours	8,656	-	148	1,055	149	178	89	150	83	197	87	85	92
Hours/trip	1.3	-	1.9	2.1	2.1	2.1	1.4	1.9	1.5	1.7	1.2	1.6	2.2
Clams/trip	17.9	24.1	32.0	18.3	18.4	18.4	17.0	17.5	18.4	18.4	19.2	20.0	19.5
Clams/hour	13.4	-	16.5	8.8	8.9	8.8	12.1	9.3	12.4	11.1	15.8	12.2	9.0
Digger Origin (%)													
Local	17.6	-	23.7	23.1	22.2	36.5	17.5	12.5	44.6	38.1	43.7	53.8	31.0
State	74.8	-	76.3	66.6	77.8	61.2	76.2	81.3	51.8	53.4	52.1	44.2	40.5
Non-state	7.6	-	-	10.6	-	2.3	6.3	7.5	3.6	8.5	4.2	1.9	28.6
Species Comp. (%)													
Butter	38.4	49.0	15.8	6.6	2.0	5.5	1.9	7.7	0.3	11.0	11.0	16.0	7.0
Cockle	44.4	46.0	76.9	72.3	72.7	74.4	93.3	76.7	84.9	80.4	78.0	82.1	89.5
Gaper	8.9	2.7	3.7	15.3	22.4	16.0	4.8	13.3	12.1	5.9	9.0	0.2	3.4
Littleneck	6.9	1.3	3.2	2.1	1.3	3.8	-	1.9	2.6	2.6	0.1	1.7	0.1
Softshell	-	-	-	-	-	-	-	-	-	-	1.8	-	-
Clams/trip													
Butter	6.9	11.8	5.1	1.2	0.4	1.0	0.3	1.4	0.1	2.0	2.1	3.2	1.4
Cockle	8.0	11.1	24.6	13.2	13.4	13.6	15.9	13.4	15.6	14.8	15.0	16.4	17.5
Gaper	1.6	0.7	1.2	2.8	4.1	2.9	0.8	2.3	2.2	1.1	1.7	-	0.7
Littleneck	1.2	0.3	1.0	0.4	0.2	0.7	-	0.3	0.5	0.5	<0.1	0.3	-
Softshell	-	-	-	-	-	-	-	-	-	-	0.4	-	-
Clams/hour													
Butter	5.1	-	2.6	0.6	0.2	0.5	0.2	0.7	<0.1	1.2	1.7	2.0	0.6
Cockle	5.9	-	12.7	6.4	6.5	6.5	11.3	7.2	10.5	8.9	12.3	10.0	8.0
Gaper	1.2	-	0.6	1.3	2.0	1.4	0.6	1.2	1.5	0.7	1.4	-	0.3
Littleneck	0.9	-	0.5	0.2	0.1	0.3	-	0.2	0.3	0.3	<0.1	0.2	-
Softshell	-	-	-	-	-	-	-	-	-	-	0.3	-	-
Size Comp. (\bar{x} size)													
Butter	84.5	80.3	71.8	74.1	76.9	80.4	75.6	74.2	67.7	68.8	72.2	68.8	69.0
Cockle	65.4	73.3	73.0	75.7	72.7	75.2	72.2	72.0	71.3	69.5	70.0	75.2	72.3
Gaper	108.1	80.4	87.4	103.4	100.5	91.7	110.7	104.7	119.0	117.7	75.1	-	128.0
Littleneck	-	57.8	-	-	57.9	53.7	-	53.3	49.5	42.2	52.5	57.1	47.0
Softshell	-	-	-	-	-	-	-	-	-	-	-	-	-
No. Clams Measured													
Butter	32	237	294	80	11	86	20	49	3	27	133	110	49
Cockle	245	257	674	851	555	812	525	486	534	238	240	542	277
Gaper	52	257	36	170	144	191	44	48	71	15	18	-	12
Littleneck	-	31	-	-	12	60	-	13	26	53	2	14	1
Softshell	-	-	-	-	-	-	-	-	-	-	-	-	-

¹ Regulation change in bag limit; effective January 1, 1977.

Table 6. Annual summary of recreational interview data; Little Nestucca Flat, Nestucca Bay.

	1971	1977 ¹	1979	1980	1981	1982	1983	1984	1985	1986
No. Diggers Sampled	1,466	34	16	38	23	22	22	62	23	14
No. Clams Sampled	23,211	1,049	484	1,120	357	653	623	1,386	561	431
No. Digger Hours	1,584	43	21	72	27	31	34	94	38	27
Hours/trip	1.1	1.3	1.3	1.9	1.2	1.4	1.5	1.5	1.7	1.9
Clams/trip	15.8	30.9	30.3	29.5	15.5	29.7	28.3	22.4	24.4	30.8
Clams/hour	14.7	24.4	23.2	15.6	13.2	21.4	18.6	14.7	14.8	16.3
Digger Origin (%)										
Local	12.4	52.9	18.8	-	13.0	4.5	18.2	21.0	4.3	42.9
State	73.5	47.1	62.5	86.8	87.0	86.4	77.3	59.7	52.2	57.1
Non-state	14.1	-	18.8	13.2	-	9.1	4.6	19.4	43.5	-
Species Comp. (%)										
Butter	-	-	-	-	-	-	-	-	-	-
Cockle	-	-	-	-	-	-	-	-	-	-
Gaper	-	-	-	-	-	-	-	-	-	-
Littleneck	-	-	-	-	-	-	-	-	-	-
Softshell	100	100	100	100	100	100	100	100	100	100
Clams/trip										
Butter	-	-	-	-	-	-	-	-	-	-
Cockle	-	-	-	-	-	-	-	-	-	-
Gaper	-	-	-	-	-	-	-	-	-	-
Littleneck	-	-	-	-	-	-	-	-	-	-
Softshell	15.8	30.9	30.3	29.5	15.5	29.7	28.3	22.4	24.4	30.8
Clams/hour										
Butter	-	-	-	-	-	-	-	-	-	-
Cockle	-	-	-	-	-	-	-	-	-	-
Gaper	-	-	-	-	-	-	-	-	-	-
Littleneck	-	-	-	-	-	-	-	-	-	-
Softshell	14.7	24.4	23.2	15.6	13.2	21.4	18.6	14.7	14.8	16.3
Size Comp. (\bar{x} size)										
Butter	-	-	-	-	-	-	-	-	-	-
Cockle	-	-	-	-	-	-	-	-	-	-
Gaper	-	-	-	-	-	-	-	-	-	-
Littleneck	-	-	-	-	-	-	-	-	-	-
Softshell	-	86.0	84.2	79.9	78.3	75.6	80.5	76.6	76.8	72.9
No. Clams Measured										
Butter	-	-	-	-	-	-	-	-	-	-
Cockle	-	-	-	-	-	-	-	-	-	-
Gaper	-	-	-	-	-	-	-	-	-	-
Littleneck	-	-	-	-	-	-	-	-	-	-
Softshell	-	250	332	254	163	547	300	240	132	116

¹ Regulation change in bag limit; effective January 1, 1977.

Table 7. Annual summary of recreational interview data; Bridge Bed, Yaquina Bay.

	1971	1975	1976	1977 ¹	1978	1979	1980	1981	1982	1983	1984	1985	1986
No. Diggers Sampled	4,518	88	29	357	89	143	142	342	149	202	191	207	120
No. Clams Sampled	41,769	694	414	2,838	892	1,313	1,222	3,773	1,609	1,543	1,383	1,765	1,363
No. Digger Hours	6,769	-	36	488	110	120	160	354	154	274	265	304	153
Hours/trip	1.5	-	1.2	1.4	1.2	0.8	1.1	1.0	1.0	1.4	1.4	1.5	1.3
Clams/trip	9.2	7.9	14.3	7.9	10.0	9.2	8.6	11.0	10.8	7.6	7.2	8.5	11.4
Clams/hour	6.2	-	11.7	5.8	8.1	10.9	7.7	10.7	10.4	5.6	5.2	5.8	8.9
Digger Origin (%)													
Local	-	-	31.0	19.6	24.7	22.4	18.3	44.7	48.3	32.2	45.5	34.3	25.8
State	-	-	48.3	70.9	69.7	76.2	70.4	49.1	48.3	67.8	49.7	62.8	72.5
Non-state	-	-	20.7	9.5	4.5	1.4	11.3	6.1	3.4	-	4.7	2.9	1.7
Species Comp. (%) other ²	-	-	-	-	-	-	-	-	-	-	7.8	13.2	-
Butter	0.2	0.8	0.2	0.8	0.6	0.2	1.7	0.8	1.9	3.2	2.4	5.8	4.3
Cockle	79.4	42.1	72.2	45.4	24.6	7.9	1.4	15.7	7.2	12.9	5.2	11.2	14.4
Gaper	19.5	54.8	24.6	43.6	72.1	89.6	94.8	81.0	85.4	72.9	80.1	62.4	65.1
Littleneck	0.8	2.3	1.4	1.4	1.1	0.4	2.1	1.7	4.5	2.8	4.5	7.4	2.6
Softshell	-	-	-	-	-	-	-	-	-	-	-	-	-
Clams/trip													
Butter	<0.1	<0.1	<0.1	<0.1	<0.1	<0.1	<0.1	0.1	0.2	0.3	0.2	0.5	0.5
Cockle	7.3	3.3	10.3	3.6	2.5	0.7	<0.1	1.7	0.8	1.0	0.4	1.0	1.6
Gaper	1.8	4.3	3.5	3.5	7.2	8.2	8.2	8.9	9.2	5.6	5.8	5.3	7.4
Littleneck	<0.1	0.2	0.2	0.1	0.1	0.1	0.2	0.2	0.5	0.2	0.3	0.6	0.3
Softshell	-	-	-	-	-	-	-	-	-	-	-	-	-
Clams/hour													
Butter	<0.1	-	<0.1	<0.1	0.1	<0.1	0.1	0.1	0.2	0.2	0.1	0.3	0.4
Cockle	4.9	-	8.4	2.6	2.0	0.9	0.1	1.1	0.8	0.7	0.3	0.6	1.3
Gaper	1.2	-	2.9	2.5	5.9	9.8	7.3	8.6	8.9	4.1	4.2	3.6	5.8
Littleneck	-	-	-	-	-	-	-	-	-	0.2	0.2	0.4	0.2
Softshell	-	-	-	-	-	-	-	-	-	-	-	-	-
Size Comp. (\bar{x} size)													
Butter	-	-	-	-	-	67.5	71.9	72.5	80.4	74.0	78.9	81.0	84.1
Cockle	60.5	49.3	46.7	57.5	69.9	66.8	55.8	57.4	65.1	66.9	73.2	56.4	64.4
Gaper	-	107.1	115.5	95.0	101.7	96.8	100.0	107.7	105.9	104.6	105.6	108.9	106.3
Littleneck	-	60.3	-	-	-	51.5	62.2	54.7	54.7	52.4	55.9	64.0	62.3
Softshell	-	-	-	-	-	-	-	-	-	-	-	-	-
No. Clams Measured													
Butter	-	-	-	-	-	-	14	20	5	35	12	23	22
Cockle	-	276	205	592	202	51	6	536	86	138	41	67	57
Gaper	-	316	62	593	154	279	419	1,370	308	406	200	266	362
Littleneck	-	12	-	-	-	2	19	55	9	34	24	49	18
Softshell	-	-	-	-	-	-	-	-	-	-	-	-	-

¹ Regulation change in bag limit; effective January 1, 1977.

² Bentnose 7.0%, Inquinata 0.2%, other 0.6%.

Table 8. Annual summary of recreational interview data; Breakwater Bed, Yaquina Bay.

	1971	1975	1977 ¹	1978	1979	1980	1981	1982	1983	1984	1985	1986
No. Diggers Sampled	1,455	46	48	20	10	21	16	14	17	63	39	31
No. Clams Sampled	22,175	515	511	270	142	261	166	157	190	654	489	303
No. Digger Hours	2,179	-	69	22	20	44	27	21	24	103	51	34
Hours/trip	1.5	-	1.4	1.1	2.0	2.1	1.7	1.5	1.4	1.6	1.3	1.1
Clams/trip	15.2	11.2	10.6	13.5	14.2	12.4	10.4	11.2	11.2	10.4	12.5	9.8
Clams/hour	10.2	-	7.4	12.6	7.1	5.9	6.1	7.7	7.9	6.4	9.7	8.9
Digger Origin (%)												
Local	-	-	35.4	55.0	30.0	28.6	18.8	71.4	52.9	30.2	61.5	32.3
State	-	-	64.6	45.0	-	71.4	50.0	28.6	47.1	66.7	33.3	67.7
Non-state	-	-	-	-	-	-	31.3	-	-	3.2	5.1	-
Species Comp. (%) other ²	-	-	-	-	-	-	-	-	-	15.9	2.9	-
Butter	1.2	1.5	1.4	0.7	-	6.5	1.8	2.5	1.1	5.8	3.7	7.3
Cockle	15.3	3.9	18.2	13.7	7.0	11.1	19.9	1.9	8.4	4.0	4.1	3.6
Gaper	83.0	95.0	78.9	84.4	84.5	81.2	75.3	94.9	85.8	71.6	87.5	82.8
Littleneck	0.4	0.2	0.8	0.4	-	1.1	1.2	0.6	0.5	2.8	1.8	5.9
Softshell	-	-	-	-	-	-	-	-	-	-	-	-
Clams/trip												
Butter	0.2	<0.1	0.1	0.1	-	0.8	0.2	0.3	0.1	0.6	0.5	0.7
Cockle	2.3	0.4	1.9	1.8	1.0	1.4	2.1	0.2	0.9	0.4	0.5	0.4
Gaper	12.7	10.6	-	-	-	10.1	7.8	10.6	9.6	7.4	11.0	8.1
Littleneck	<0.1	<0.1	0.1	0.1	-	0.1	0.1	0.1	0.1	0.3	0.2	0.6
Softshell	-	-	-	-	-	-	-	-	-	-	-	-
Clams/hour												
Butter	0.1	-	0.1	0.1	-	0.4	0.1	0.2	0.1	0.4	0.4	0.6
Cockle	1.6	-	1.3	1.7	0.5	0.6	1.2	0.1	0.7	0.3	0.4	0.3
Gaper	8.4	-	5.8	10.6	6.0	4.8	4.6	7.3	6.8	4.6	8.5	7.4
Littleneck	<0.1	-	0.1	0.1	-	0.1	0.1	<0.1	<0.1	0.2	0.2	0.5
Softshell	-	-	-	-	-	-	-	-	-	-	-	-
Size Comp. (\bar{x} size)												
Butter	<0.1	-	0.1	<0.1	<0.1	85.3	-	-	97.0	82.3	78.2	80.0
Cockle	75.6	-	72.5	76.1	-	-	62.6	-	81.6	70.1	69.6	67.2
Gaper	113.8	116.2	123.3	118.9	-	109.1	106.4	106.4	100.7	96.3	104.7	108.9
Littleneck	-	-	-	-	-	64.0	-	-	51.0	52.0	55.6	56.6
Softshell	-	-	-	-	-	-	-	-	-	-	-	-
No. Clams Measured												
Butter	-	-	-	-	-	16	-	4	1	36	14	22
Cockle	-	-	-	79	37	-	27	3	12	32	16	11
Gaper	-	310	198	207	-	195	69	142	109	200	265	176
Littleneck	-	-	-	-	-	3	-	1	1	20	8	18
Softshell	-	-	-	-	-	-	-	-	-	-	-	-

¹ Regulation change in bag limit; effective January 1, 1977.

² Bentnose Clam.

Table 9. Annual summary of recreational interview data; Idaho Point, Yaquina Bay.

	1971	1975	1976	1977 ¹	1978	1979	1980	1981	1982	1983	1984	1985	1986
No. Diggers Sampled	10,462	123	42	309	20	193	182	147	80	138	52	26	47
No. Clams Sampled	138,784	2,600	812	3,773	298	2,783	3,118	2,339	1,219	2,171	890	403	849
No. Digger Hours	15,621	-	77	464	25	248	302	222	145	219	83	42	77
Hours/trip	1.5	-	1.8	1.5	1.3	1.3	1.7	1.5	1.8	1.6	1.6	1.6	1.6
Clams/trip	13.3	21.1	19.3	12.2	14.9	14.4	17.1	15.9	15.2	15.7	17.1	15.5	18.1
Clams/hour	8.9	-	10.6	8.1	11.8	11.2	10.3	10.5	8.4	9.9	10.7	9.6	11.0
Digger Origin (%)													
Local	-	-	35.7	12.3	45.0	31.6	28.6	15.6	18.8	9.4	21.2	50.0	21.3
State	-	-	33.3	84.1	50.0	62.7	65.4	70.7	81.3	85.5	76.9	42.3	72.3
Non-state	-	-	31.0	3.6	5.0	5.7	6.0	13.6	-	5.1	1.9	7.7	6.4
Species Comp. (%) other ²	-	-	-	-	-	-	-	-	-	-	0.4	-	-
Butter	.03	<0.1	0.5	0.5	-	1.7	-	0.1	-	0.4	0.6	-	-
Cockle	77.7	93.2	72.5	78.5	83.9	70.2	87.2	93.4	95.0	85.5	97.1	99.0	93.9
Gaper	21.7	5.8	18.4	13.1	15.1	20.7	12.8	4.1	2.9	2.8	1.6	-	5.4
Littleneck	0.4	<0.1	0.1	0.2	-	0.1	-	0.5	0.9	0.7	0.3	1.0	0.7
Softshell	-	-	-	-	-	-	-	-	-	-	-	-	-
Clams/trip													
Butter	<0.1	<0.1	0.1	0.1	-	0.2	-	-	-	0.1	0.1	-	-
Cockle	10.3	19.7	14.0	9.6	12.5	10.1	14.9	14.9	14.5	13.5	16.6	15.3	17.0
Gaper	2.9	1.2	3.6	1.6	2.3	3.0	2.2	0.6	0.4	0.4	0.3	-	1.0
Littleneck	<0.1	<0.1	<0.1	<0.1	-	<0.1	-	<0.1	<0.1	0.1	0.1	0.2	0.1
Softshell	-	-	-	-	-	-	-	-	-	-	-	-	-
Clams/hour													
Butter	0.1	-	0.1	0.1	-	0.2	-	-	-	<0.1	0.1	-	10.4
Cockle	6.9	-	7.7	6.4	9.9	7.9	1.3	9.8	8.0	8.5	10.4	9.5	0.6
Gaper	1.9	-	2.0	1.1	1.8	2.3	9.0	0.1	0.2	0.3	0.2	-	0.1
Littleneck	<0.1	-	<0.1	<0.1	-	<0.1	-	-	0.1	0.1	<0.1	0.1	-
Softshell	-	-	-	-	-	-	-	-	-	-	-	-	-
Size Comp. (\bar{x} size)													
Butter	-	-	-	-	-	75.1	-	87.3	-	-	85.8	-	-
Cockle	61.0	58.6	58.3	60.2	59.0	58.2	57.8	54.3	54.4	52.6	52.3	56.8	56.7
Gaper	113.0	96.6	91.3	93.5	95.2	95.9	94.5	91.7	83.3	89.1	-	-	94.2
Littleneck	-	-	-	-	-	55.3	-	50.1	42.7	42.6	44.0	42.8	42.0
Softshell	-	-	-	-	-	-	-	-	-	-	-	-	-
No. Clams Measured													
Butter	-	-	-	-	-	-	-	4	-	-	5	-	-
Cockle	-	-	-	-	-	45	1,620	1,302	-	540	240	377	477
Gaper	-	369	522	1,804	250	1,471	181	75	-	40	-	-	5
Littleneck	-	171	126	173	42	24	-	9	-	5	4	4	2
Softshell	-	-	-	-	-	-	-	-	-	-	-	-	-

¹ Regulation change in bag limit; effective January 1, 1977.² Bentnose clam.

Table 10. Annual summary of recreational interview data; Northwest Gas Plant, Yaquina Bay.

	1971	1975	1976	1977 ¹	1978	1979	1980	1981	1982	1983	1984	1985	1986
No. Diggers Sampled	5,857	92	93	315	49	137	63	38	29	23	9	26	57
No. Clams Sampled	119,702	13,541	583	3,852	684	1,073	495	151	128	219	136	319	1,125
No. Digger Hours	8,725	-	139	402	67	165	84	54	33	25	13	33	71
Hours/trip	1.5	-	1.5	1.3	1.4	1.2	1.3	1.4	1.1	1.1	1.4	1.3	1.2
Clams/trip	20.4	14.7	17.0	12.2	14.0	7.8	7.9	4.0	4.4	9.5	15.1	12.3	19.7
Clams/hour	13.7	-	11.4	9.6	10.2	6.5	5.9	2.8	3.9	8.8	10.5	9.7	15.8
Digger Origin (%)													
Local	-	-	9.7	22.5	59.2	33.6	30.2	36.8	65.5	34.8	44.4	50.0	47.4
State	-	-	86.0	72.1	38.8	49.6	68.3	57.9	34.5	65.2	33.3	50.0	38.6
Non-state	-	-	4.3	5.4	2.0	16.8	1.5	5.3	-	-	22.2	-	14.0
Species Comp. (%) other ²	-	-	-	-	-	-	-	-	-	1.8	2.2	4.7	-
Butter	0.6	1.9	0.1	1.1	0.1	0.2	0.6	2.0	-	0.5	-	-	-
Cockle	85.1	60.6	71.3	74.5	82.6	81.9	78.4	11.3	91.4	84.0	94.9	92.2	95.9
Gaper	12.7	29.8	22.0	13.8	16.8	11.9	19.6	34.4	7.0	-	-	0.3	-
Littleneck	0.7	1.3	0.3	0.5	0.4	0.6	1.4	2.0	1.6	13.7	2.9	2.8	3.0
Softshell	-	-	-	-	-	-	-	47.0	-	-	-	-	-
Clams/trip													
Butter	0.1	0.3	<0.1	0.1	<0.1	<0.1	0.1	0.1	-	<0.1	-	-	-
Cockle	17.4	8.9	12.1	9.1	11.5	6.4	6.2	0.4	4.0	8.0	14.3	11.3	18.9
Gaper	2.6	4.4	3.7	1.7	2.3	0.9	1.5	1.4	0.3	-	-	-	-
Littleneck	0.1	0.2	<0.1	0.1	0.1	<0.1	0.1	0.1	0.1	1.3	0.4	0.3	0.6
Softshell	-	-	-	-	-	-	-	1.9	-	-	-	-	-
Clams/hour													
Butter	<0.1	-	<0.1	0.1	<0.1	<0.1	<0.1	0.1	-	<0.1	-	-	-
Cockle	11.7	-	8.1	7.1	8.5	5.3	4.6	0.3	3.6	7.4	9.9	8.9	15.2
Gaper	1.7	-	2.5	1.3	1.7	0.8	1.2	1.0	0.3	-	-	-	-
Littleneck	<0.1	-	<0.1	0.1	<0.1	<0.1	0.1	0.1	0.1	1.2	0.3	0.3	0.5
Softshell	-	-	-	-	-	-	-	1.3	-	-	-	-	-
Size Comp. (x size)													
Butter	-	-	-	-	-	-	99.0	80.0	-	97.0	-	-	-
Cockle	66.3	63.4	56.5	60.7	60.0	59.4	52.5	47.1	50.2	57.0	56.6	54.5	56.5
Gaper	95.3	91.3	91.5	92.8	101.1	94.9	96.0	88.8	87.3	96.5	-	33.0	-
Littleneck	-	-	-	-	-	-	47.4	48.0	45.5	45.8	-	48.6	51.3
Softshell	-	-	-	-	-	-	-	57.5	-	-	-	-	-
No. Clams Measured													
Butter	-	-	-	-	-	-	1	1	-	1	-	-	-
Cockle	-	219	648	889	525	606	349	18	60	177	122	293	408
Gaper	-	451	217	152	106	96	61	46	7	8	-	1	-
Littleneck	-	-	-	-	-	5	5	2	-	30	-	9	15
Softshell	-	-	-	-	-	-	-	2	-	-	-	-	-

¹ Regulation change in bag limit; effective January 1, 1977.

² Bentnose clam.

Table 11. Annual summary of recreational interview data; Coquille Point, Yaquina Bay.

	1981	1982	1983	1984	1985	1986
No. Diggers Sampled	11	53	27	-	7	13
No. Clams Sampled	24	267	147	-	45	28
No. Digger Hours	9	75	33	-	6	22
Hours/trip	0.8	1.4	1.2	-	0.8	1.7
Clams/trip	2.2	5.0	5.4	-	6.4	2.2
Clams/hour	2.7	3.6	4.5	-	8.2	1.3
Digger Origin (%)						
Local	-	9.4	25.9	-	57.1	46.2
State	100.0	75.5	55.6	-	42.9	23.1
Non-state	-	15.1	18.5	-	-	30.8
Species Comp. (%)						
Butter	4.2	3.0	40.1	-	60.0	7.1
Cockle	-	-	34.7	-	17.8	42.9
Gaper	95.8	93.3	15.7	-	-	-
Littleneck	-	3.0	8.2	-	22.2	35.7
Softshell	-	-	-	-	-	-
Clams/trip						
Butter	0.1	0.2	2.2	-	3.9	0.2
Cockle	-	-	1.9	-	1.1	0.9
Gaper	2.1	4.7	0.9	-	-	-
Littleneck	-	0.2	0.4	-	1.4	0.8
Softshell	-	-	-	-	-	-
Clams/hour						
Butter	0.1	0.1	1.8	-	4.9	0.1
Cockle	-	-	1.6	-	1.5	0.5
Gaper	2.6	3.3	0.7	-	-	-
Littleneck	-	0.1	0.4	-	1.8	0.5
Softshell	-	-	-	-	-	-
Size Comp. (\bar{x} size)						
Butter	88.0	93.6	74.9	-	80.4	80.0
Cockle	-	-	47.2	-	38.6	37.5
Gaper	94.5	96.6	98.9	-	-	-
Littleneck	-	61.3	45.9	-	41.9	41.8
Softshell	-	-	-	-	-	-
No. Clams Measured						
Butter	1	5	22	-	27	2
Cockle	-	-	51	-	9	12
Gaper	23	142	15	-	-	-
Littleneck	-	4	12	-	10	10
Softshell	-	-	-	-	-	-

Table 12. Annual summary of recreational interview data; Critser's Island, Yaquina Bay.

	1983	1984	1985	1986
No. Diggers Sampled	42	14	11	29
No. Clams Sampled	1,380	491	377	906
No. Digger Hours	56	24	15	53
Hours/trip	1.3	1.7	1.4	1.8
Clams/trip	32.9	35.1	34.3	31.2
Clams/hour	24.6	20.9	25.1	17.3
Digger Origin (%)				
Local	40.5	50.0	81.8	48.3
State	59.5	50.0	18.2	51.7
Non-state	-	-	-	-
Species Comp. (%)				
Butter	-	-	-	-
Cockle	-	-	-	-
Gaper	-	-	-	-
Littleneck	-	-	-	-
Softshell	100.0	100.0	100.0	100.0
Clams/trip				
Butter	-	-	-	-
Cockle	-	-	-	-
Gaper	-	-	-	-
Littleneck	-	-	-	-
Softshell	32.9	35.1	34.3	31.2
Clams/hour				
Butter	-	-	-	-
Cockle	-	-	-	-
Gaper	-	-	-	-
Littleneck	-	-	-	-
Softshell	24.6	20.9	25.1	17.3
Size Comp. (\bar{x} size)				
Butter	-	-	-	-
Cockle	-	-	-	-
Gaper	-	-	-	-
Littleneck	-	-	-	-
Softshell	82.5	93.3	93.1	85.4
No. Clams Measured				
Butter	-	-	-	-
Cockle	-	-	-	-
Gaper	-	-	-	-
Littleneck	-	-	-	-
Softshell	569	68	280	306

Table 13. Annual summary of recreational interview data; North Bank Softshell, Yaquina Bay.

	1984	1985	1986
No. Diggers Sampled	26	27	10
No. Clams Sampled	971	698	156
No. Digger Hours	25	27	20
Hours/trip	0.9	1.0	2.0
Clams/trip	37.4	25.9	15.6
Clams/hour	39.6	25.9	7.8
Digger Origin (%)			
Local	84.6	51.9	100.0
State	15.4	33.3	-
Non-state	-	14.8	-
Species Comp. (%)			
Butter	-	-	-
Cockle	-	-	-
Gaper	-	-	-
Littleneck	-	-	-
Softshell	100.0	99.9	100.0
Clams/trip			
Butter	-	-	-
Cockle	-	-	-
Gaper	-	-	-
Littleneck	-	-	-
Softshell	37.4	25.8	15.6
Clams/hour			
Butter	-	-	-
Cockle	-	-	-
Gaper	-	-	-
Littleneck	-	-	-
Softshell	39.6	25.8	7.8
Size Comp. (\bar{x} size)			
Butter	-	-	-
Cockle	-	-	-
Gaper	-	-	-
Littleneck	-	-	-
Softshell	74.6	63.6	83.5
No. Clams Measured			
Butter	-	-	-
Cockle	-	-	-
Gaper	-	-	-
Littleneck	-	-	-
Softshell	240	366	63

Table 14. Annual summary of recreational interview data; North Shore, Alsea Bay.

	1982	1983	1984	1985	1986
No. Diggers Sampled	4	3	-	-	-
No. Clams Sampled	71	22	-	-	-
No. Digger Hours	6	5	-	-	-
Hours/trip	1.5	1.5	-	-	-
Clams/trip	17.8	7.3	-	-	-
Clams/hour	11.8	4.9	-	-	-
Digger Origin (%)					
Local	100.0	-	-	-	-
State	-	100.0	-	-	-
Non-state	-	-	-	-	-
Species Comp. (%)					
Butter	-	-	-	-	-
Cockle	100.0	90.9	-	-	-
Gaper	-	-	-	-	-
Littleneck	-	4.6	-	-	-
Softshell	-	4.6	-	-	-
Clams/trip					
Butter	-	-	-	-	-
Cockle	17.8	6.7	-	-	-
Gaper	-	-	-	-	-
Littleneck	-	0.3	-	-	-
Softshell	-	0.3	-	-	-
Clams/hour					
Butter	-	-	-	-	-
Cockle	11.8	4.4	-	-	-
Gaper	-	-	-	-	-
Littleneck	-	0.2	-	-	-
Softshell	-	0.2	-	-	-
Size Comp. (\bar{x} size)					
Butter	-	-	-	-	-
Cockle	80.1	71.0	-	-	-
Gaper	-	-	-	-	-
Littleneck	-	39.0	-	-	-
Softshell	-	58.0	-	-	-
No. Clams Measured					
Butter	-	-	-	-	-
Cockle	39	20	-	-	-
Gaper	-	-	-	-	-
Littleneck	-	-	-	-	-
Softshell	-	-	-	-	-

Table 15. Annual summary of recreational interview data; Bayshore, Alsea Bay.

	1982	1983	1984	1985	1986
No. Diggers Sampled	32	24	17	35	9
No. Clams Sampled	529	316	156	478	138
No. Digger Hours	46	40	29	61	18
Hours/trip	1.4	1.7	1.7	1.7	2.0
Clams/trip	16.5	13.2	9.2	13.7	15.3
Clams/hour	11.5	8.0	5.5	7.9	7.7
Digger Origin (%)					
Local	59.4	66.7	41.2	48.6	66.7
State	25.0	25.0	58.8	45.7	33.3
Non-state	15.6	8.3	-	5.7	-
Species Comp. (%)					
Butter	-	-	-	-	-
Cockle	99.8	99.7	98.7	88.9	94.2
Gaper	0.2	-	1.3	2.9	5.1
Littleneck	-	-	-	0.4	0.7
Softshell	-	0.3	-	7.5	-
Clams/trip					
Butter	-	-	-	-	-
Cockle	16.5	13.1	9.1	12.1	14.4
Gaper	<0.1	-	0.1	0.4	0.8
Littleneck	-	-	-	0.1	0.1
Softshell	-	<0.1	-	1.0	-
Clams/hour					
Butter	-	-	-	-	-
Cockle	11.5	8.0	5.4	7.0	7.2
Gaper	<0.1	-	0.1	0.2	0.4
Littleneck	-	-	-	-	0.1
Softshell	-	<0.1	-	0.6	-
Size Comp. (\bar{x} size)					
Butter	-	-	-	-	-
Cockle	72.9	76.4	76.3	73.8	74.8
Gaper	-	-	116.0	130.9	121.7
Littleneck	-	-	-	44.0	49.0
Softshell	-	-	-	-	-
No. Clams Measured					
Butter	-	-	-	-	-
Cockle	159	295	154	331	109
Gaper	-	-	2	10	6
Littleneck	-	-	-	2	1
Softshell	-	-	-	-	-

Table 16. Annual summary of recreational interview data; Breakwater, Alsea Bay.

1986	
No. Diggers Sampled	23
No. Clams Sampled	122
No. Digger Hours	25
Hours/trip	1.1
Clams/trip	5.3
Clams/hour	5.0
Digger Origin (%)	
Local	47.8
State	52.2
Non-state	-
Species Comp. (%)	
Butter	-
Cockle	89.3
Gaper	-
Littleneck	10.7
Softshell	-
Clams/trip	
Butter	-
Cockle	4.7
Gaper	-
Littleneck	0.6
Softshell	-
Clams/hour	
Butter	-
Cockle	4.4
Gaper	-
Littleneck	0.5
Softshell	-
Size Comp. (\bar{x} size)	
Butter	47.0
Cockle	64.1
Gaper	-
Littleneck	45.1
Softshell	-
No. Clams Measured	
Butter	1
Cockle	83
Gaper	-
Littleneck	8
Softshell	-

Table 17. Annual summary of recreational interview data; Softshell, Alsea Bay.

	1983	1984	1985	1986
No. Diggers Sampled	4	5	5	8
No. Clams Sampled	91	138	151	148
No. Digger Hours	6	7	10	9
Hours/trip	1.5	1.4	2.0	1.1
Clams/trip	22.8	27.6	30.2	18.5
Clams/hour	15.2	19.7	15.1	16.4
Digger Origin (%)				
Local	50.0	60.0	80.0	50.0
State	50.0	-	20.0	25.0
Non-state	-	40.0	-	25.0
Species Comp. (%)				
Butter	-	-	-	-
Cockle	-	-	-	-
Gaper	-	-	-	-
Littleneck	-	-	-	-
Softshell	100.0	100.0	100.0	100.0
Clams/trip				
Butter	-	-	-	-
Cockle	-	-	-	-
Gaper	-	-	-	-
Littleneck	-	-	-	-
Softshell	22.8	27.6	30.2	18.5
Clams/hour				
Butter	-	-	-	-
Cockle	-	-	-	-
Gaper	-	-	-	-
Littleneck	-	-	-	-
Softshell	15.2	19.7	15.1	16.4
Size Comp. (\bar{x} size)				
Butter	-	-	-	-
Cockle	-	-	-	-
Gaper	-	-	-	-
Littleneck	-	-	-	-
Softshell	96.8	94.6	95.0	97.1
No. Clams Measured				
Butter	-	-	-	-
Cockle	-	-	-	-
Gaper	-	-	-	-
Littleneck	-	-	-	-
Softshell	86	135	180	102

Table 18. Annual summary of recreational interview data; North Fork², Siuslaw Bay.

	1971	1976	1977 ¹	1978	1979	1980	1981	1982	1983	1984	1985	1986
No. Diggers Sampled	3,203	39	51	21	42	7	115	21	33	168	70	47
No. Clams Sampled	72,756	1,067	1,426	670	1,140	188	3,445	875	1,163	5,418	2,297	1,704
No. Digger Hours	4,844	54	101	32	55	5	145	28	32	231	104	65
Hours/trip	1.5	1.4	20.	1.5	1.3	0.7	1.3	1.3	1.0	1.4	1.5	1.4
Clams/trip	22.7	27.4	28.0	31.9	27.1	26.9	30.0	41.7	35.2	34.0	32.8	36.3
Clams/hour	15.0	19.8	14.1	21.3	20.6	37.6	23.7	31.3	36.3	24.7	22.2	26.4
Digger Origin (%)												
Local	-	12.8	28.8	28.6	19.0	28.6	38.3	47.6	51.5	27.4	17.1	34.0
State	-	84.6	66.7	71.4	47.6	71.4	48.7	52.4	42.4	67.3	70.0	61.7
Non-state	-	2.6	4.4	-	33.3	-	13.0	-	9.1	5.4	12.9	4.3
Species Comp. (%)												
Butter	-	-	-	-	-	-	-	-	-	-	-	-
Cockle	-	-	-	-	-	-	-	-	-	-	-	-
Gaper	-	-	-	-	-	-	-	-	-	-	-	-
Littleneck	-	-	-	-	-	-	-	-	-	-	-	-
Softshell	100.0	100.0	100.0	100.0	100.0	100.0	100.0	100.0	100.0	100.0	100.0	100.0
Clams/trip												
Butter	-	-	-	-	-	-	-	-	-	-	-	-
Cockle	-	-	-	-	-	-	-	-	-	-	-	-
Gaper	-	-	-	-	-	-	-	-	-	-	-	-
Littleneck	-	-	-	-	-	-	-	-	-	-	-	-
Softshell	22.7	27.4	28.0	31.9	27.1	26.9	30.0	41.7	35.2	34.0	32.8	36.3
Clams/hour												
Butter	-	-	-	-	-	-	-	-	-	-	-	-
Cockle	-	-	-	-	-	-	-	-	-	-	-	-
Gaper	-	-	-	-	-	-	-	-	-	-	-	-
Littleneck	-	-	-	-	-	-	-	-	-	-	-	-
Softshell	15.0	19.8	14.1	21.3	20.6	37.6	23.7	31.3	36.3	24.7	22.2	26.4
Size Comp. (\bar{x} size)												
Butter	-	-	-	-	-	-	-	-	-	-	-	-
Cockle	-	-	-	-	-	-	-	-	-	-	-	-
Gaper	-	-	-	-	-	-	-	-	-	-	-	-
Littleneck	-	-	-	-	-	-	-	-	-	-	-	-
Softshell	-	107.4	96.5	99.0	89.5	90.0	89.4	90.7	92.8	95.0	99.2	96.1
No. Clams Measured												
Butter	-	-	-	-	-	-	-	-	-	-	-	-
Cockle	-	-	-	-	-	-	-	-	-	-	-	-
Gaper	-	-	-	-	-	-	-	-	-	-	-	-
Littleneck	-	-	-	-	-	-	-	-	-	-	-	-
Softshell	-	741	408	335	676	110	1,629	757	867	297	670	670

¹ Regulation change in bag limit; effective January 1, 1977.

² Includes digging on west side, east side and in North Fork of Siuslaw and near Florence.

Table 19. Annual summary of recreational interview data; Bolin Island, Umpqua Bay.

	1983	1984	1985	1986
No. Diggers Sampled	2	23	-	-
No. Clams Sampled	72	930	-	-
No. Digger Hours	4	69	-	-
Hours/trip	2.0	3.0	-	-
Clams/trip	36.0	40.4	-	-
Clams/hour	18.0	13.6	-	-
Digger Origin (%)				
Local	-	30.4	-	-
State	100.0	56.5	-	-
Non-state	-	13.0	-	-
Species Comp. (%)				
Butter	-	-	-	-
Cockle	-	-	-	-
Gaper	-	-	-	-
Littleneck	-	-	-	-
Softshell	100.0	100.0	-	-
Clams/trip				
Butter	-	-	-	-
Cockle	-	-	-	-
Gaper	-	-	-	-
Littleneck	-	-	-	-
Softshell	36.0	40.4	-	-
Clams/hour				
Butter	-	-	-	-
Cockle	-	-	-	-
Gaper	-	-	-	-
Littleneck	-	-	-	-
Softshell	18.0	13.6	-	-
Size Comp. (\bar{x} size)				
Butter	-	-	-	-
Cockle	-	-	-	-
Gaper	-	-	-	-
Littleneck	-	-	-	-
Softshell	-	-	-	-
No. Clams Measured				
Butter	-	-	-	-
Cockle	-	-	-	-
Gaper	-	-	-	-
Littleneck	-	-	-	-
Softshell	-	-	-	-

Table 20. Annual summary of recreational interview data; Hanson's Marina - South Slough, Coos Bay.

	1983	1984	1985	1986
No. Diggers Sampled	6	-	-	-
No. Clams Sampled	101	-	-	-
No. Digger Hours	5	-	-	-
Hours/trip	0.8	-	-	-
Clams/trip	16.8	-	-	-
Clams/hour	22.4	-	-	-
Digger Origin (%)				
Local	100.0	-	-	-
State	-	-	-	-
Non-state	-	-	-	-
Species Comp. (%)				
Butter	4.0	-	-	-
Cockle	19.8	-	-	-
Gaper	69.3	-	-	-
Littleneck	1.2	-	-	-
Softshell	-	-	-	-
Clams/trip				
Butter	0.7	-	-	-
Cockle	3.3	-	-	-
Gaper	11.7	-	-	-
Littleneck	1.2	-	-	-
Softshell	-	-	-	-
Clams/hour				
Butter	0.9	-	-	-
Cockle	4.4	-	-	-
Gaper	15.6	-	-	-
Littleneck	1.6	-	-	-
Softshell	-	-	-	-
Size Comp. (\bar{x} size) ¹				
Butter	-	-	-	-
Cockle	-	-	-	-
Gaper	-	-	-	-
Littleneck	-	-	-	-
Softshell	-	-	-	-
No. Clams Measured ¹				
Butter	-	-	-	-
Cockle	-	-	-	-
Gaper	-	-	-	-
Littleneck	-	-	-	-
Softshell	-	-	-	-

¹ Not taken.

Table 21. Annual summary of recreational interview data; Charleston Triangle, Coos Bay.

	1983	1984	1985	1986
No. Diggers Sampled	40	32	20	58
No. Clams Sampled	771	588	410	1,193
No. Digger Hours	44	27	25	75
Hours/trip	1.1	0.8	1.2	1.3
Clams/trip	19.3	18.4	20.5	20.6
Clams/hour	17.5	22.0	16.7	16.0
Digger Origin (%)				
Local	22.5	40.6	50.0	29.3
State	72.5	56.3	35.0	62.1
Non-state	5.0	3.1	15.0	8.6
Species Comp. (%)				
Butter	19.6	10.9	13.2	2.6
Cockle	55.1	69.2	56.6	66.5
Gaper	3.9	15.0	20.5	17.5
Littleneck	23.2	4.9	9.5	8.5
Softshell	-	-	-	0.3
Clams/trip				
Butter	3.8	2.0	2.7	0.5
Cockle	10.6	12.7	11.6	13.7
Gaper	0.8	2.8	4.2	3.6
Littleneck	4.5	0.9	1.9	1.8
Softshell	-	-	-	0.1
Clams/hour				
Butter	3.4	2.4	2.2	0.4
Cockle	9.7	15.2	9.5	10.6
Gaper	0.7	3.3	3.4	2.8
Littleneck	4.1	1.1	1.6	1.4
Softshell	-	-	-	0.1
Size Comp. (\bar{x} size)				
Butter	73.3	80.2	82.5	75.3
Cockle	51.2	66.3	62.6	63.2
Gaper	88.6	95.2	98.2	97.3
Littleneck	55.2	57.6	61.3	61.1
Softshell	-	-	-	-
No. Clams Measured				
Butter	39	17	52	15
Cockle	45	218	185	175
Gaper	26	54	67	30
Littleneck	18	159	41	51
Softshell	-	-	-	-

Table 22. Annual summary of recreational interview data; Charleston Flat, Coos Bay.

	1983	1984	1985	1986
No. Diggers Sampled	60	27	18	100
No. Clams Sampled	859	435	341	1,980
No. Digger Hours	125	29	32	180
Hours/trip	2.1	1.1	1.8	1.8
Clams/trip	14.3	16.1	18.9	19.8
Clams/hour	6.9	15.1	10.7	11.0
Digger Origin (%)				
Local	21.7	40.7	16.7	35.0
State	73.3	51.9	38.9	57.0
Non-state	5.0	7.4	44.4	8.0
Species Comp. (%)				
Butter	2.0	4.6	6.7	2.8
Cockle	46.6	60.9	72.4	83.3
Gaper	38.8	27.6	17.3	8.8
Littleneck	10.6	3.7	3.5	4.1
Softshell	-	3.0	-	0.1
Clams/trip				
Butter	0.3	0.7	1.3	0.6
Cockle	6.7	9.8	13.7	16.5
Gaper	5.6	4.4	3.3	1.8
Littleneck	1.5	0.6	0.7	0.8
Softshell	-	0.5	-	<0.1
Clams/hour				
Butter	0.1	0.7	0.7	0.3
Cockle	3.2	9.2	7.7	9.2
Gaper	2.7	4.6	1.8	1.0
Littleneck	0.7	0.6	0.4	0.5
Softshell	-	-	-	<0.1
Size Comp. (\bar{x} size)				
Butter	84.0	78.1	75.0	78.9
Cockle	59.9	63.2	62.2	66.9
Gaper	100.6	105.9	110.1	109.1
Littleneck	55.0	65.0	62.2	60.5
Softshell	-	-	-	-
No. Clams Measured				
Butter	1	13	20	43
Cockle	38	92	247	234
Gaper	13	80	58	70
Littleneck	3	2	13	30
Softshell	-	-	-	-

Table 23. Annual summary of recreational interview data; Peterson Flat, Coos Bay.

	1983	1984	1985	1986
No. Diggers Sampled	12	4	-	19
No. Clams Sampled	235	54	-	284
No. Digger Hours	24	5	-	41
Hours/trip	2.0	1.3	-	2.2
Clams/trip	19.6	13.5	-	14.9
Clams/hour	10.0	10.8	-	6.9
Digger Origin (%)				
Local	25.0	0	-	42.1
State	75.0	50.0	-	0.0
Non-state	-	50.0	-	57.9
Species Comp. (%)other ¹	-	7.4	-	-
Butter	8.1	-	-	3.5
Cockle	21.7	1.9	-	34.5
Gaper	45.1	88.9	-	60.2
Littleneck	25.1	1.9	-	1.4
Softshell	-	-	-	-
Clams/trip other ¹	-	1.0	-	-
Butter	1.6	-	-	0.5
Cockle	4.3	0.3	-	5.2
Gaper	8.8	12.0	-	9.0
Littleneck	4.9	0.3	-	0.2
Softshell	-	-	-	-
Clams/hour other ¹	-	0.8	-	-
Butter	0.8	-	-	0.2
Cockle	2.2	0.2	-	2.4
Gaper	4.5	9.6	-	4.2
Littleneck	2.5	0.2	-	0.1
Softshell	-	-	-	-
Size Comp. (\bar{x} size)				
Butter	-	-	-	95.0
Cockle	-	-	-	64.9
Gaper	-	113.7	-	110.6
Littleneck	-	-	-	62.0
Softshell	-	-	-	-
No. Clams Measured				
Butter	-	-	-	2
Cockle	-	-	-	43
Gaper	-	23	-	23
Littleneck	-	-	-	1
Softshell	-	-	-	-

¹ Bentnose clam.

Table 24. Annual summary of recreational interview data; Pigeon Point, Coos Bay.

	1983	1984	1985	1986
No. Diggers Sampled	111	43	10	68
No. Clams Sampled	1,681	679	190	1,160
No. Digger Hours	95	70	19	145
Hours/trip	0.9	1.6	1.9	2.1
Clams/trip	15.1	15.8	19.0	17.1
Clams/hour	17.7	9.7	10.0	8.0
Digger Origin (%)				
Local	45.9	65.1	20.0	51.5
State	48.6	27.9	60.0	41.2
Non-state	5.4	7.0	20.0	7.4
Species Comp. (%)				
Butter	27.1	36.4	47.9	56.5
Cockle	0.7	8.0	2.1	1.3
Gaper	51.2	32.7	10.0	17.2
Littleneck	20.9	22.5	39.5	24.1
Softshell	-	0.6	-	0.8
Clams/trip				
Butter	4.1	5.4	9.1	9.6
Cockle	0.1	1.3	0.4	0.2
Gaper	7.7	5.2	1.9	2.9
Littleneck	3.2	3.6	7.5	4.1
Softshell	-	0.1	-	0.1
Clams/hour				
Butter	4.8	3.5	4.8	4.5
Cockle	0.1	0.8	0.2	0.1
Gaper	9.1	3.2	1.0	1.4
Littleneck	3.7	2.2	3.9	1.9
Softshell	-	0.1	-	0.1
Size Comp. (\bar{x} size)				
Butter	85.9	84.8	84.3	84.0
Cockle	37.9	-	40.0	-
Gaper	108.0	104.5	85.3	107.9
Littleneck	67.2	62.0	60.6	63.3
Softshell	-	-	-	-
No. Clams Measured				
Butter	44	93	51	145
Cockle	7	-	4	-
Gaper	46	52	19	15
Littleneck	9	50	74	22
Softshell	-	-	-	-

Table 25. Annual summary of recreational interview data; Sitka Flat, Coos Bay.

	1983	1984	1985	1986
No. Diggers Sampled	46	-	6	3
No. Clams Sampled	678	-	112	107
No. Digger Hours	82	-	14	5
Hours/trip	1.8	-	2.3	1.5
Clams/trip	14.7	-	18.7	35.7
Clams/hour	8.3	-	8.0	23.8
Digger Origin (%)				
Local	58.7	-	50.0	100.0
State	41.3	-	50.0	-
Non-state	-	-	-	-
Species Comp. (%)				
Butter	19.8	-	8.9	55.1
Cockle	1.0	-	42.0	-
Gaper	50.9	-	29.5	0.9
Littleneck	28.2	-	19.6	43.9
Softshell	-	-	-	-
Clams/trip				
Butter	2.9	-	1.7	19.7
Cockle	0.2	-	7.8	-
Gaper	7.5	-	5.5	0.3
Littleneck	4.2	-	3.7	15.7
Softshell	-	-	-	-
Clams/hour				
Butter	1.6	-	0.7	13.1
Cockle	0.1	-	3.4	-
Gaper	4.2	-	2.4	0.2
Littleneck	2.3	-	1.6	10.4
Softshell	-	-	-	-
Size Comp. (\bar{x} size)				
Butter	85.9	-	-	-
Cockle	37.9	-	46.5	-
Gaper	108.0	-	-	-
Littleneck	67.2	-	-	-
Softshell	-	-	-	-
No. Clams Measured				
Butter	44	-	-	-
Cockle	7	-	47	-
Gaper	46	-	-	-
Littleneck	9	-	-	-
Softshell	-	-	-	-

Table 26. Annual summary of recreational interview data; Empire Flat, Coos Bay.

	1983	1984	1985	1986
No. Diggers Sampled	70	9	-	5
No. Clams Sampled	1,057	180	-	82
No. Digger Hours	99	9	-	9
Hours/trip	1.4	1.0	-	1.7
Clams/trip	15.1	20.0	-	16.4
Clams/hour	10.7	20.0	-	9.6
Digger Origin (%)				
Local	54.3	100.0	-	100.0
State	34.3	-	-	-
Non-state	11.4	-	-	-
Species Comp. (%)				
Butter	1.4	-	-	1.2
Cockle	11.2	13.3	-	68.3
Gaper	58.8	33.3	-	28.0
Littleneck	0.3	53.3	-	1.2
Softshell	-	-	-	-
Clams/trip				
Butter	0.2	-	-	0.2
Cockle	1.7	2.7	-	11.2
Gaper	8.9	6.7	-	4.6
Littleneck	<0.1	10.7	-	0.2
Softshell	-	-	-	-
Clams/hour				
Butter	0.2	-	-	0.1
Cockle	1.2	2.7	-	6.6
Gaper	6.3	6.7	-	2.7
Littleneck	<0.1	10.7	-	0.1
Softshell	-	-	-	-
Size Comp. (\bar{x} size)				
Butter	-	-	-	-
Cockle	-	-	-	67.0
Gaper	-	-	-	95.7
Littleneck	-	-	-	-
Softshell	-	-	-	-
No. Clams Measured				
Butter	-	-	-	-
Cockle	-	-	-	21
Gaper	-	-	-	12
Littleneck	-	-	-	-
Softshell	-	-	-	-

Table 27. Annual summary of recreational interview data; North Spit, Coos Bay.

	1983	1984	1985	1986
No. Diggers Sampled	65	50	29	163
No. Clams Sampled	692	746	449	2,262
No. Digger Hours	93	82	59	246
Hours/trip	1.4	1.6	2.0	1.5
Clams/trip	10.7	14.9	15.5	13.9
Clams/hour	7.4	9.2	7.6	9.2
Digger Origin (%)				
Local	72.3	68.0	37.9	65.0
State	27.7	28.0	58.6	32.5
Non-state	-	4.0	3.4	2.5
Species Comp. (%)				
Butter	3.5	6.4	5.1	6.7
Cockle	17.6	22.0	17.1	13.7
Gaper	75.3	65.5	74.6	73.7
Littleneck	3.6	6.0	2.4	3.9
Softshell	-	-	-	-
Clams/trip				
Butter	0.4	1.0	0.8	0.9
Cockle	1.9	3.3	2.7	1.9
Gaper	8.0	9.8	11.6	10.2
Littleneck	0.4	0.9	0.4	0.5
Softshell	-	-	-	-
Clams/hour				
Butter	0.3	0.6	0.4	0.6
Cockle	1.3	2.0	1.3	1.3
Gaper	5.6	6.0	5.7	6.8
Littleneck	0.3	0.6	0.2	0.4
Softshell	-	-	-	-
Size Comp. (\bar{x} size)				
Butter	-	77.0	81.8	87.0
Cockle	67.7	62.2	65.1	64.4
Gaper	109.6	111.2	100.5	122.7
Littleneck	72.0	59.5	46.5	64.4
Softshell	--	-	-	-
No. Clams Measured				
Butter	-	28	9	21
Cockle	20	39	29	62
Gaper	185	138	117	71
Littleneck	2	28	2	14
Softshell	-	-	-	-

Table 28. Annual summary of recreational interview data; Clam Island, Coos Bay.

	1983	1984	1985	1986
No. Diggers Sampled	57	462	11	76
No. Clams Sampled	1,002	7,931	208	1,097
No. Digger Hours	82	737	15	98
Hours/trip	1.4	1.9	1.4	1.3
Clams/trip	17.6	17.2	18.9	14.4
Clams/hour	12.2	10.8	13.9	11.3
Digger Origin (%)				
Local	36.8	51.5	81.8	52.6
State	57.9	46.3	18.2	46.1
Non-state	5.3	2.2	-	1.3
Species Comp. (%)				
Butter	2.88	4.6	26.9	0.4
Cockle	36.5	33.7	12.5	26.7
Gaper	54.2	59.8	54.3	72.0
Littleneck	1.1	1.8	6.2	0.9
Softshell	5.4	-	-	-
Clams/trip				
Butter	0.5	0.8	5.1	0.1
Cockle	6.4	5.8	2.4	3.9
Gaper	9.5	10.3	10.3	10.4
Littleneck	0.2	0.3	1.2	0.1
Softshell	1.0	-	-	-
Clams/hour				
Butter	0.3	0.5	3.7	-
Cockle	4.5	3.6	1.7	3.0
Gaper	6.6	6.4	7.5	8.1
Littleneck	0.1	0.2	0.9	0.1
Softshell	0.7	-	-	-
Size Comp. (\bar{x} size)				
Butter	78.7	95.0	89.5	97.0
Cockle	54.1	76.8	69.4	80.1
Gaper	107.7	121.0	119.2	118.8
Littleneck	55.5	68.0	66.9	-
Softshell	-	-	-	-
No. Clams Measured				
Butter	6	1	55	1
Cockle	8	12	25	43
Gaper	46	56	108	136
Littleneck	4	1	13	-
Softshell	-	-	-	-

Table 29. Annual summary of recreational interview data; Bandon Softshell, Coquille Bay.

	1983	1984	1985	1986
No. Diggers Sampled	6	1	-	21
No. Clams Sampled	215	36	-	635
No. Digger Hours	5	2	-	35
Hours/trip	0.8	1.5	-	1.7
Clams/trip	35.8	36.0	-	30.2
Clams/hour	43.0	24.0	-	18.1
Digger Origin (%)				
Local	100.0	-	-	52.4
State	-	-	-	28.6
Non-state	-	100.0	-	19.0
Species Comp. (%)				
Butter	-	-	-	-
Cockle	-	-	-	-
Gaper	-	-	-	-
Littleneck	-	-	-	-
Softshell	100.0	100.0	-	100.0
Clams/trip				
Butter	-	-	-	-
Cockle	-	-	-	-
Gaper	-	-	-	-
Littleneck	-	-	-	-
Softshell	35.8	36.0	-	30.2
Clams/hour				
Butter	-	-	-	-
Cockle	-	-	-	-
Gaper	-	-	-	-
Littleneck	-	-	-	-
Softshell	43.0	24.0	-	18.1
Size Comp. (\bar{x} size) ¹				
Butter	-	-	-	-
Cockle	-	-	-	-
Gaper	-	-	-	-
Littleneck	-	-	-	-
Softshell	-	-	-	-
No. Clams Measured ¹				
Butter	-	-	-	-
Cockle	-	-	-	-
Gaper	-	-	-	-
Littleneck	-	-	-	-
Softshell	-	-	-	-

¹ Not taken.

Table 30. Annual summary of recreational interview data; all estuaries combined.

	1975	1976	1977 ¹	1978	1979	1980	1981	1982	1983	1984	1985	1986
No. Diggers Sampled	453	721	4,165	847	1,603	1,284	1,276	870	1,506	1,800	898	1,392
No. Clams Sampled	8,837	15,085	62,963	14,008	24,697	21,601	19,610	12,928	22,189	33,916	14,614	24,691
No. Digger Hours	-	1,101	6,833	1,187	1,986	1,718	1,606	1,104	2,113	2,589	1,303	2,128
Hours/trip	-	1.5	1.6	1.4	1.2	1.3	1.3	1.3	1.4	1.4	1.5	1.5
Clams/trip	19.5	20.9	15.1	16.5	15.4	16.8	15.4	14.9	14.7	18.8	16.3	17.7
Clams/hour	-	13.7	9.2	11.8	12.4	12.6	12.2	11.7	10.5	13.1	11.2	11.6
Digger Origin (%)												
Local	-	25.5	30.5	29.0	29.3	22.9	30.6	40.5	33.6	42.7	37.8	36.9
State	-	66.6	64.4	62.8	63.8	70.5	60.0	54.0	60.7	52.7	53.7	56.7
Non-state	-	7.9	5.1	8.3	7.0	6.6	9.4	5.5	5.7	4.7	8.6	6.4
Species Comp. (%)												
Butter	12.9	11.1	7.3	5.2	8.5	12.8	15.8	16.2	9.9	7.8	10.6	13.3
Cockle	58.7	48.2	46.9	56.6	53.1	44.3	29.3	31.3	31.2	22.7	32.2	40.7
Gaper	19.1	20.9	32.5	26.9	25.1	17.9	24.9	31.8	35.6	26.1	23.6	20.8
Littleneck	9.3	12.5	7.5	5.8	6.5	7.5	9.9	8.1	7.8	6.2	5.0	6.7
Softshell	0.1	7.2	5.8	5.5	6.7	17.5	20.1	12.5	15.4	37.2	28.7	17.1
Clams/trip												
Butter	2.5	2.3	1.0	0.9	1.3	2.2	2.4	2.4	1.4	1.5	1.7	2.4
Cockle	11.3	10.0	6.6	9.3	8.1	7.4	4.5	4.6	4.5	4.3	5.1	7.2
Gaper	3.7	4.4	4.6	4.4	3.8	3.0	3.8	4.7	5.1	4.9	3.8	3.7
Littleneck	1.8	2.6	1.1	1.0	1.0	1.3	1.5	1.2	1.1	1.2	0.8	1.2
Softshell	<0.1	1.5	0.8	0.9	1.0	2.9	3.1	1.9	2.2	6.9	4.6	3.0
Clams/hour												
Butter	-	1.5	0.6	0.6	1.0	1.6	1.9	1.9	1.0	1.0	1.2	1.5
Cockle	-	6.6	4.0	6.6	6.5	5.6	3.6	3.6	3.2	3.0	3.5	4.7
Gaper	-	2.9	2.8	3.1	3.1	2.2	3.0	3.7	3.6	3.4	2.6	2.4
Littleneck	-	1.7	0.6	0.7	0.3	0.9	1.2	1.0	0.8	0.8	0.5	0.8
Softshell	-	1.0	0.5	0.6	0.8	2.2	2.4	1.5	1.6	4.8	3.2	2.0
Size Comp. (\bar{x} size)												
Butter	79.6	81.1	82.4	90.7	78.9	69.2	78.1	75.1	71.0	79.5	76.5	79.8
Cockle	61.4	63.2	62.3	62.6	63.1	60.2	55.3	63.2	60.8	62.0	64.2	63.3
Gaper	104.1	89.5	90.7	95.5	93.0	98.0	104.3	101.4	103.6	104.2	108.0	111.6
Littleneck	42.2	45.8	40.3	44.8	47.0	39.8	44.2	40.2	41.4	50.1	66.5	47.7
Softshell	-	95.5	101.9	83.3	89.5	86.4	88.2	81.8	87.7	86.0	88.4	91.0
No. Clams Measured	3,615	7,441	11,743	5,096	8,643	6,661	5,372	4,044	6,774	5,152	7,438	6,997

Table 31. Peak counts of clam diggers¹.

Estuary	Tideflat	1975	1976	1977 ¹	1978	1979	1980	1981	1982	1983	1984	1985	1986
Tillamook	Garibaldi Flat	425	350	131	225	256	300	460	516	487	350	118	380
	Bay Ocean	-	280	122	39	107	-	33	13	10	4	-	17
Netarts	Happy Camp	-	175	73	-	150	160	425	500	478	200	191	314
Nestucca	Little Nestucca	-	-	-	-	-	-	44	6	12	6	8	8
Yaquina	Bridge Bed	-	245	138	30	91	84	225	625	275	84	107	204
	Breakwater Bed	-	127	120	62	23	20	27	63	26	28	25	30
	Idaho Point	-	110	98	45	66	61	38	176	46	35	31	50
	NW Gas Plant	-	-	-	-	24	26	41	16	12	10	11	34
	Coquille Point	-	-	-	-	17	18	45	41	20	5	9	14
Alsea	North Beach	-	-	-	-	-	-	-	4	3	-	5	0
	Bay Shore	-	-	-	-	-	-	-	49	31	14	20	10
	Waldport Breakwater	-	-	-	-	-	-	-	12	9	-	22	22
Siuslaw	North Fork	-	55	-	-	109	57	146	33	22	43	41	44
Coos Bay	Charleston Triangle	-	-	-	-	-	-	-	-	31	24	41	39
	Charleston Flat	-	-	-	-	-	-	-	-	64	30	26	27
	Peterson Flat	-	-	-	-	-	-	-	-	5	-	2	15
	Fossil Point	-	-	-	-	-	-	-	-	38	-	0	44
	Pigeon Point	-	-	-	-	-	-	-	-	62	50	42	67
	Empire Flat	-	-	-	-	-	-	-	-	20	-	19	22
	Hanson's Marina	-	-	-	-	-	-	-	-	5	3	4	-
	Clam Island	-	-	-	-	-	-	-	-	-	58	-	86
North Spit	-	-	-	-	-	-	-	-	-	-	-	83	
Bandon	Softshell Bed	-	-	-	-	-	-	-	-	-	-	-	50

¹ Number of clam diggers actually on tideflat at time of count. Count occurred at or near low tide.

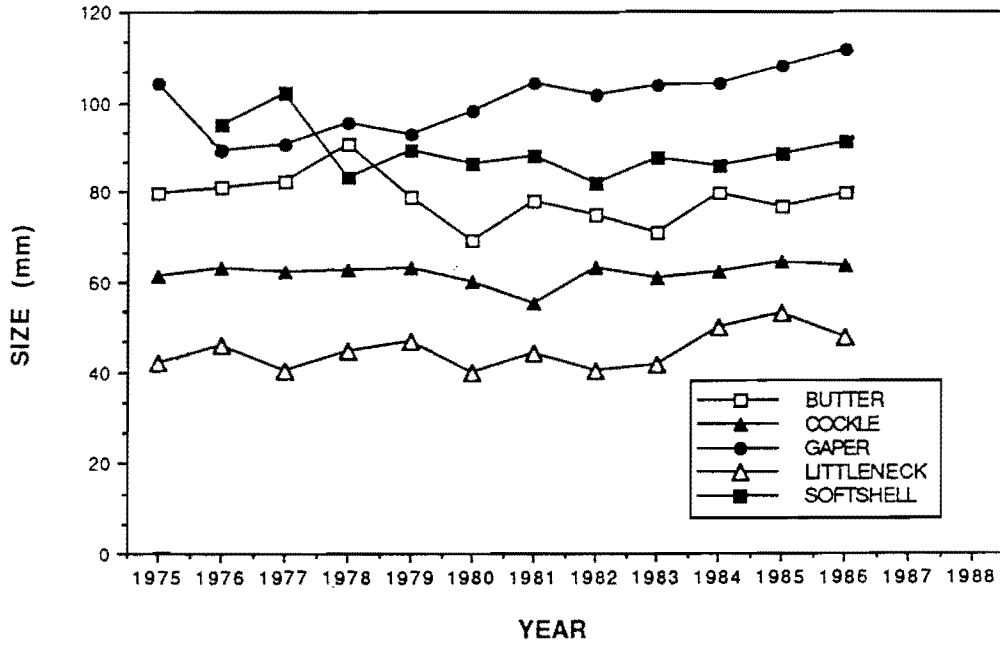


Figure 1. Size composition of recreationally harvested bay clams, all bays combined, 1975-86.

Table 32. Summary of pounds of bay clams reported commercially harvested in Oregon by species, 1970-86.

Year	Butter	Cockle	Gaper	Littleneck	Softshell	Macoma	Total
1970	885	12,257	1,218	863	10,661	0	25,884
1971	217	9,391	10,345	639	7,714	220	28,526
1972	52	7,269	34,006	1,406	18,772	0	61,505
1973	95	5,756	185	9,771	1,349	0	17,156
1974	412	6,073	0	8,987	843	0	16,315
1975	0	6,855	15,024	4,311	360	0	26,550
1976	816	322	85,831	455	630	0	88,054
1977	607	859	81,775	232	1,366	894	85,733
1978	1,452	6,717	207,685	1,056	52	0	216,962
1979	606	2,299	91,028	0	979	0	94,912
1980	40	2,244	74,459	4,268	456	0	81,467
1981	2,409	4,580	68,508	4,892	749	0	81,138
1982	3,654	10,517	106,440	13,231	248	0	134,090
1983	4,035	2,579	95,091	34,444	36	0	136,185
1984	4,842	17,912	50,573	46,874	366	0	120,567
1985	1,646	29,412	20,121	46,266	1,809	0	99,254
1986	2,862	31,681	17,021	27,487	3,558	0	82,609

Table 33. Summary of pounds of bay clams reported commercially harvested in major Oregon estuaries, 1970-86.

Year	Nehalem	Tillamook	Netarts	Yaquina	Alsea	Siuslaw	Umpqua	Coos	Coquille	Total
1970	258	7,819	2,210	444	0	0	10,631	4,522	0	25,884
1971	589	6,168	1,598	1,819	0	0	7,459	10,893	0	28,526
1972	80	9,637	914	57	70	0	6,105	44,642	0	61,505
1973	329	11,997	1,191	0	0	0	786	2,853	0	17,156
1974	882	9,309	2,049	398	0	0	445	3,232	0	16,315
1975	0	4,637	0	0	13	0	309	21,553	38	26,550
1976	0	998	0	0	480	0	0	86,576	0	88,054
1977	0	2,619	0	71,013	0	0	35	12,066	0	85,733
1978	0	3,111	0	172,047	0	0	0	41,804	0	216,962
1979	174	433	0	74,565	0	3,432	0	16,308	0	94,912
1980	373	5,320	486	244	0	9,109	0	65,935	0	81,467
1981	65	4,259	0	128	0	684	0	76,002	0	81,138
1982	10,862	11,501	37	15	0	223	25	111,427	0	134,090
1983	31,856	3,144	200	5,253	0	15	0	95,717	0	136,185
1984	23,069	42,663	0	22	0	50	0	54,763	0	120,567
1985	40,349	34,148	240	0	0	895	268	23,030	324	99,254
1986	30,545	28,737	480	6	0	1,206	0	19,557	2,078	82,609

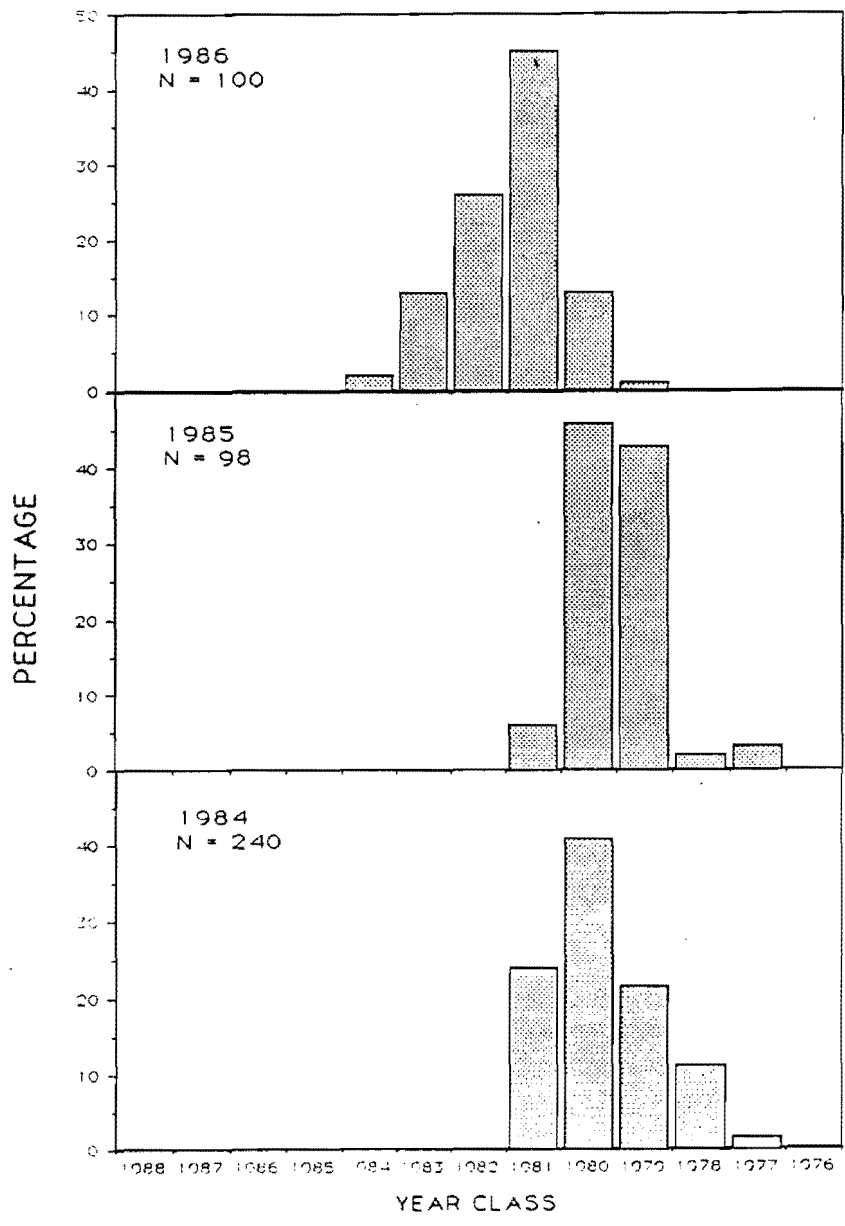


Figure 2. Age composition of commercial subtidal native littleneck clam harvest, Nohalem Bay, 1984-86.

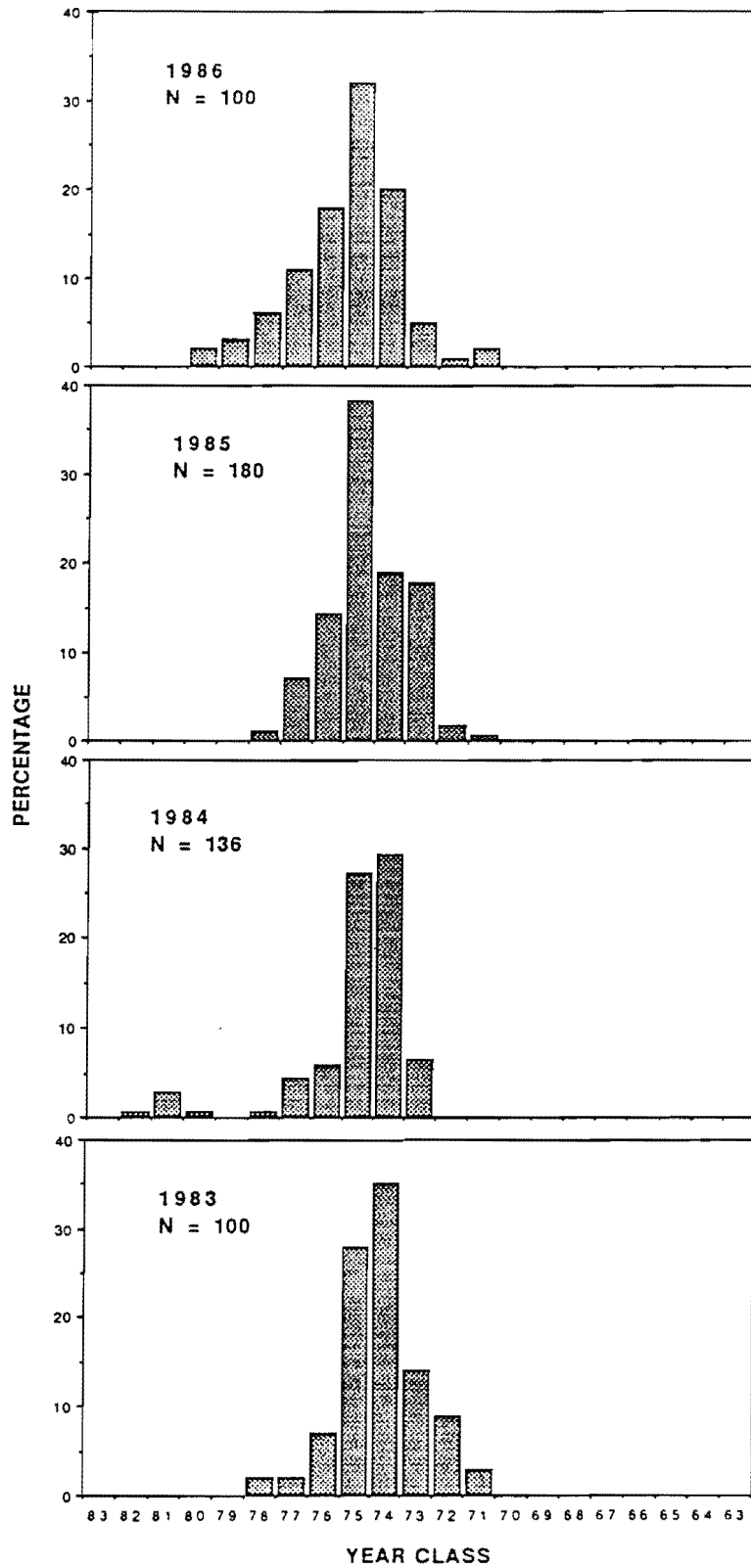


Figure 3. Age composition of commercial subtidal gaper clam harvest, Pigeon Point, Coos Bay, 1983-86.

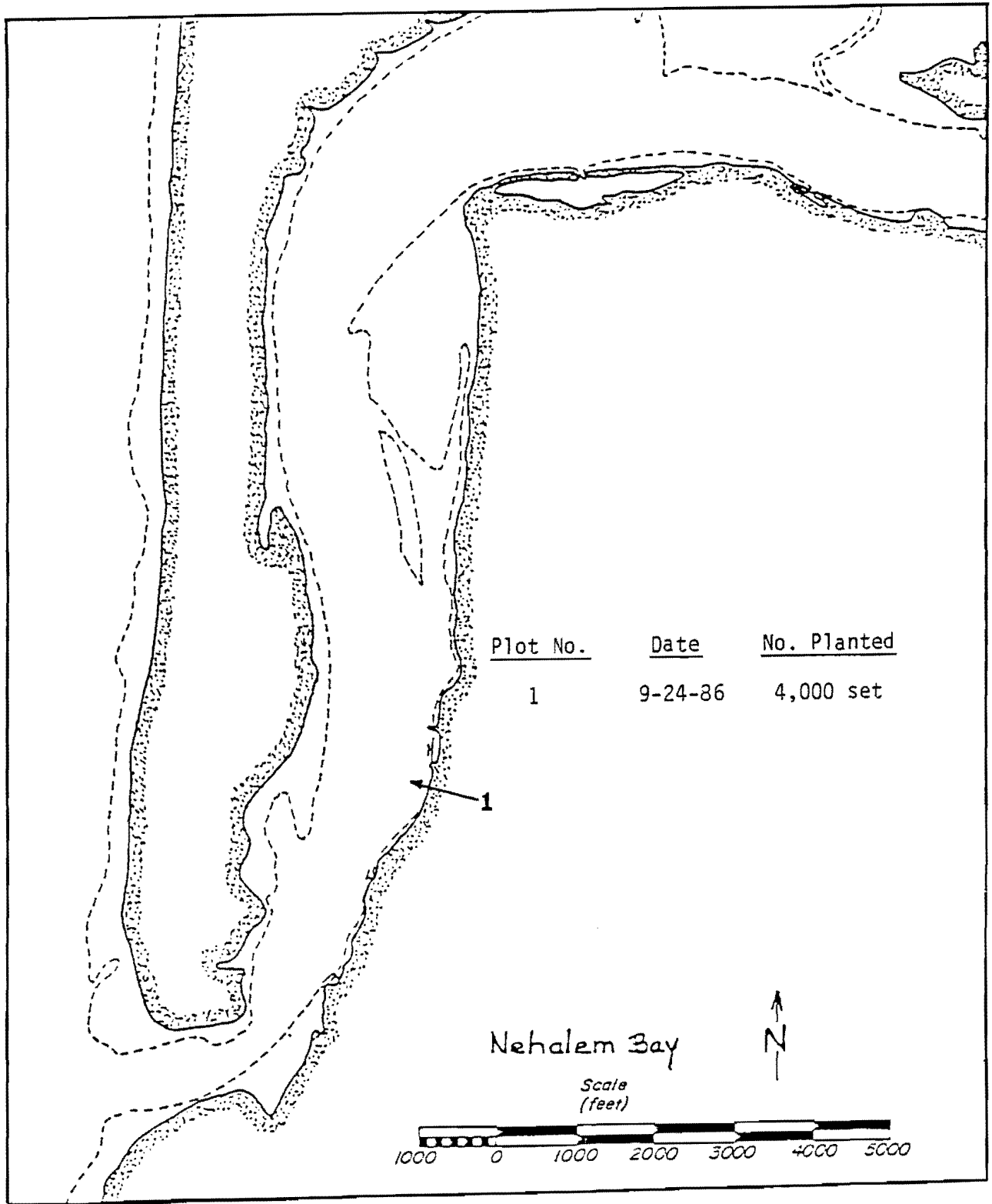


Figure 4. Location of Manila littleneck clams released in Nehalem Bay, 1986.

Table 34. Summary of experimental Manila littleneck clam plants in Tillamook Bay, 1971-86.

Plot No.	Planting Date	Number Released	Length at Release (mm)	Planting Density (ft ²)	Sample Date	Recovery Size (mm)	Survival (%)
1	9/18/71	20,000 ¹	6.3	50	5/16/72	-	0.0
2	3/4/83	2,000,000 ¹	-	800	2/21/84 7/15/84 8/02/85	14.1 17.5 30.2	0.4 0.3 0.1
3	4/16/83	1,000	41.1	5.2	7/15/84	41.8	19.2
4	6/16/83	10,000	-	22.2	9/08/83 7/15/84 8/02/85	31.0 34.0 37.6	18.9 11.7 0.6
5	6/30/83	10,000 ¹	-	44.0	9/08/83 7/15/84	13.6 21.0	0.7 0.5
6	3/14/84	1,150	-	6.3	7/15/84 8/02/85	40.6 -	44.4 0.0
7	3/14/84	700	-	10.6	7/15/84 8/02/85 5/28/86	39.1 45.0 -	17.0 1.9 0.0
8	3/14/84	4,000 ¹	-	79.6	7/15/84	-	0.0
9	5/07/84	2,400	-	10.0	7/15/84 8/02/85 5/28/86	36.6 42.2 47.8	100+ 100+ 37.5
10	7/15/84	1,000	36.5	10.2	8/02/85	-	0.0
11	7/31/84	300	-	6.3	8/02/85 5/28/86	49.8 49.3	47.6 71.4
12	11/21/84	3,400	31.0	10.0	8/02/85 5/28/86	35.3 38.1	20.0 2.0
13	11/21/84	3,400	31.0	10.0	8/02/85 5/28/86	34.5 40.0	34.0 20.0
14	11/21/84	13,500	31.0	10.0	8/02/85 5/28/86	35.8 40.2	56.0 32.0
15	4/09/85	10,200	37.0	10.0	8/02/85 5/28/86	44.2 45.8	82.0 78.0

Table 34 (continued)

Plot No.	Planting Date	Number Released	Length at Release (mm)	Planting Density (ft ²)	Sample Date	Recovery Size (mm)	Survival (%)
16	4/09/85	12,700	37.0	10.0	8/02/85	40.0	96.0
					5/28/86	44.8	97.0
17	4/09/85	7,700	37.0	10.0	8/02/85	44.2	54.0
					5/28/86	42.9	83.0
18	4/25/85	100,000 ^{1,2}	-	100.0	7/25/86	25.0	14.8
19	4/25/85	10,000 ¹	-	100.0	7/25/86	24.3	1.0

¹ Hatchery produced clams, planted as set.

² Clams placed under "Vexar" netting.

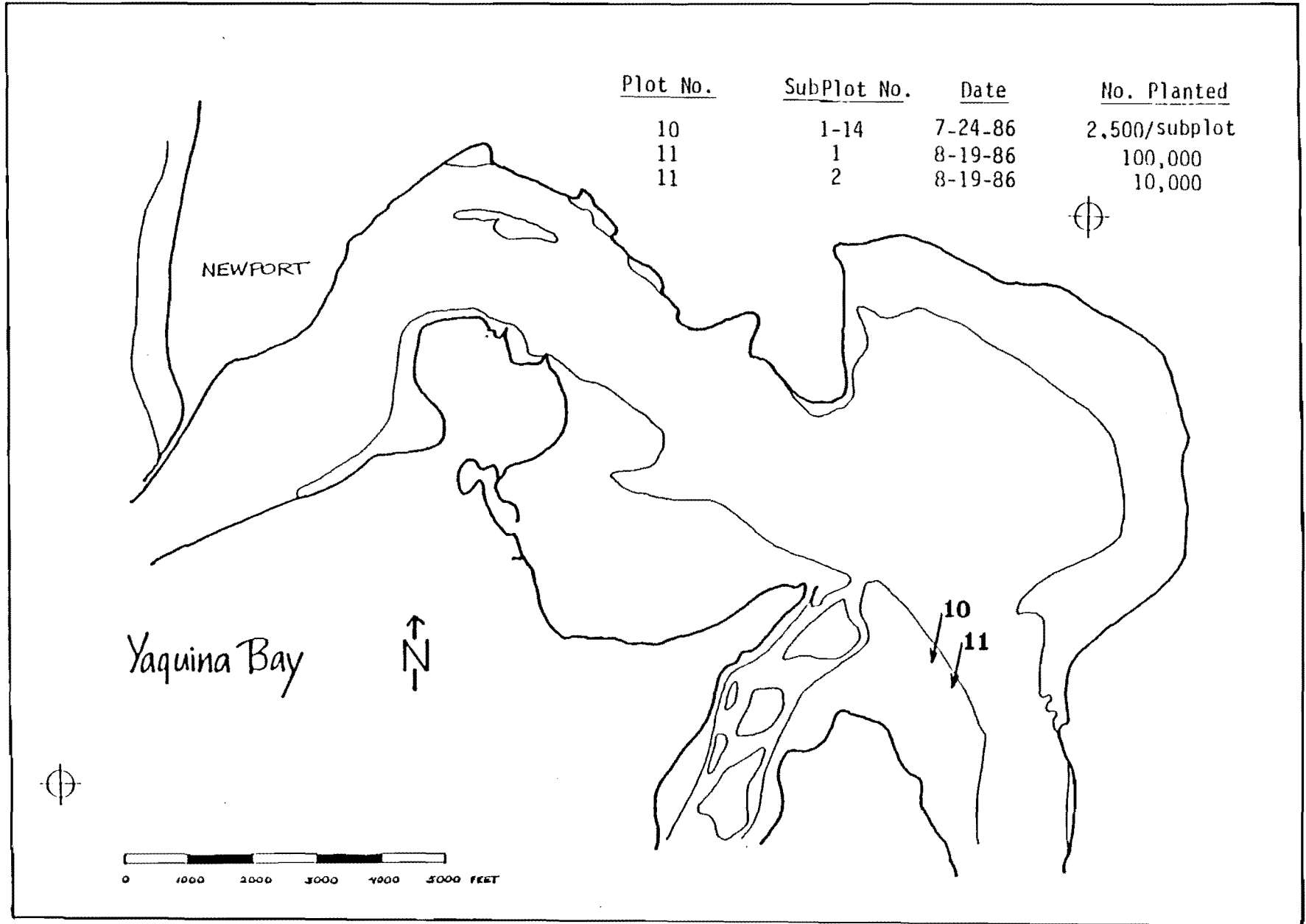


Figure 5. Location of Manila littleneck clams released in Yaquina Bay, 1986.

Table 35. Test plots and substrate types for Manila clam plants, Yaquina Bay, 1986.

Plot No.	Subplot No.	Date	Number Planted	Substrate Type
10	1	7/24/86	2,500	Natural "control"
	2	"	"	Natural "Vexar"
	3	"	"	Natural "raked"
	4	"	"	Natural "raked "Vexar"
	5	"	"	Whole oyster shell
	6	"	"	Whole oyster shell "Vexar"
	7	"	"	Ground oyster shell
	8	"	"	Ground oyster shell "Vexar"
	9	"	"	Pea gravel
	10	"	"	Pea gravel "Vexar"
	11	"	"	Whole oyster shell/pea gravel
	12	"	"	Whole oyster shell/pea gravel and "Vexar"
	13	"	"	Ground oyster shell/pea gravel
	14	"	"	Ground oyster shell/pea gravel and "Vexar"
11	1	8/19/86	100,000	Natural substrate "Vexar"
	2	"	10,000	Natural substrate "control"

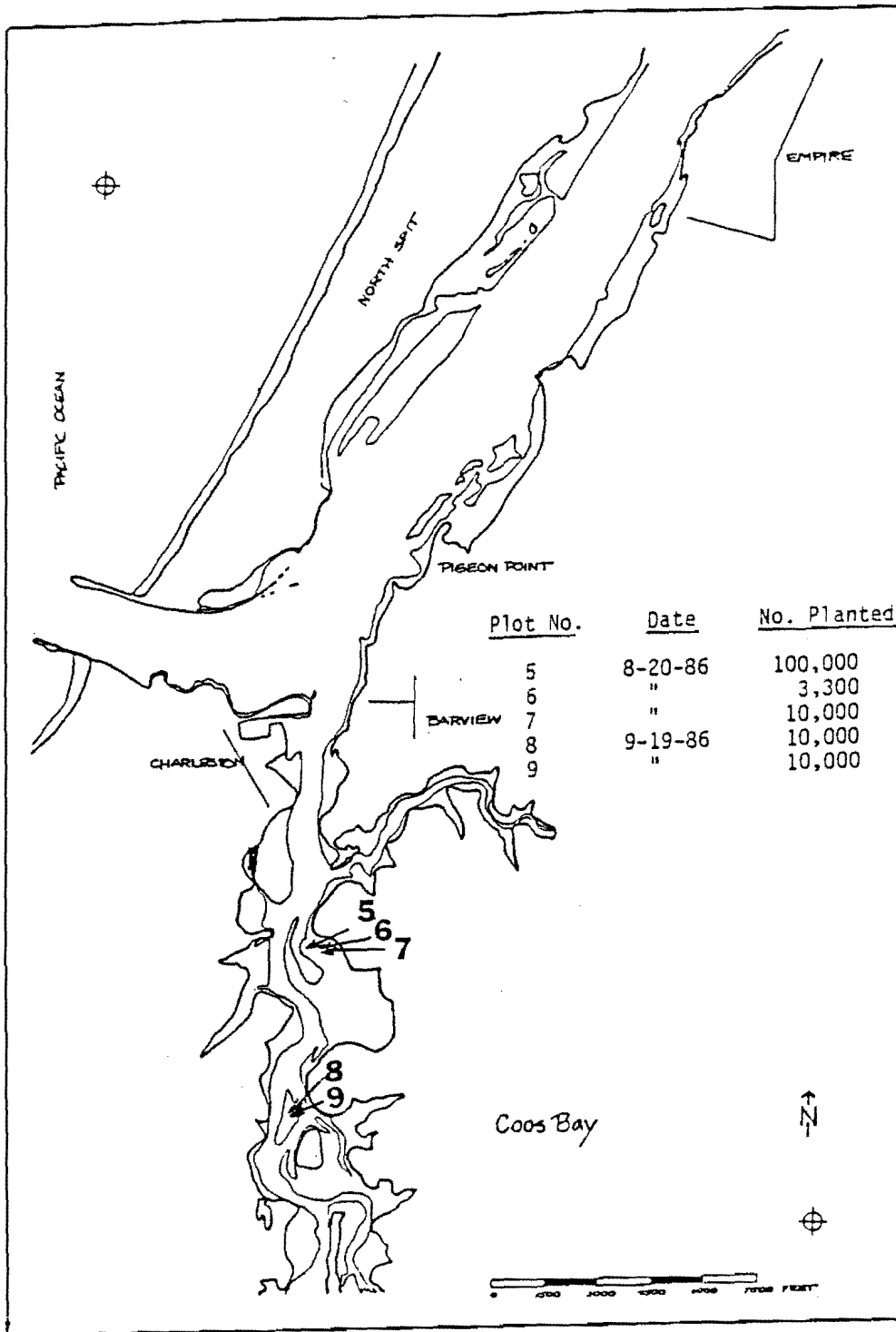


Figure 6. Location of Manila littleneck clams released in Coos Bay, 1986.

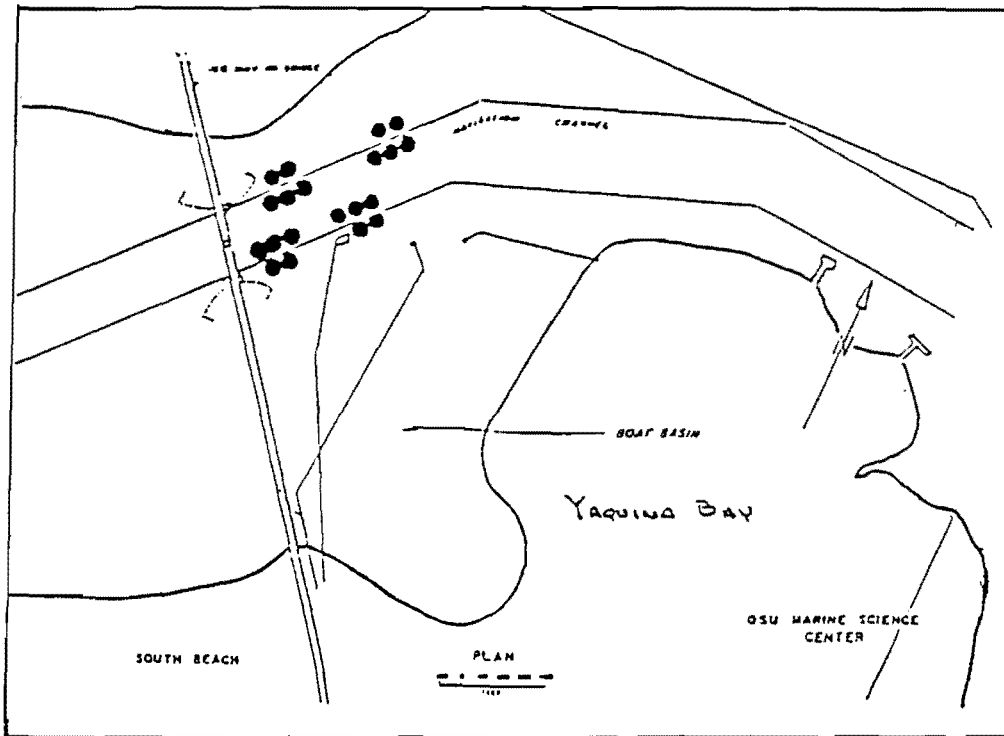


Figure 7. Subtidal clam survey area in Yaquina Bay, 1986.

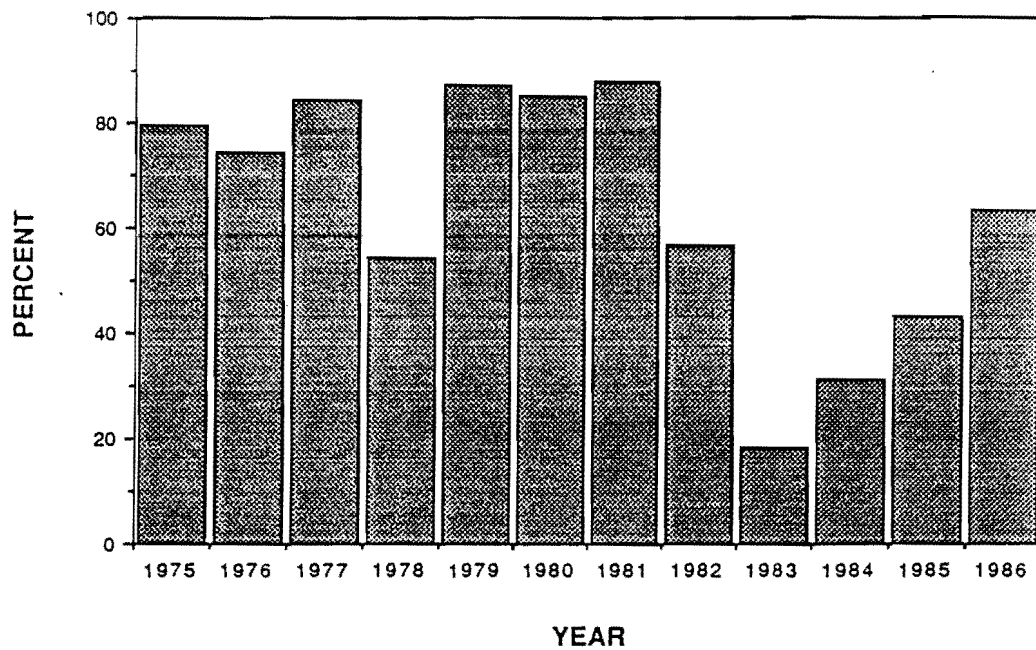


Figure 8. Percent of 1975 year class gaper clams in subtidal samples, Yaquina Bay, area 2, 1975-86.

Table 36. Population and biomass estimates (95% CI) for gaper clams in Yaquina Bay, Area 2, 1975-86.

Year	Population Numbers	Estimates 95% CI	Biomass Pounds	Estimates 95% CI
1975	36,302,000	±56.1	5,084,200	N/A
1976	25,566,400	±51.5	5,217,200	N/A
1977	29,316,000	±44.5	4,969,000	N/A
1978	10,560,000	±48.9	4,136,800	N/A
1979	11,116,700	±51.7	3,459,900	±39.0
1980	11,050,000	±51.6	4,252,500	±33.2
1981	6,160,000	±49.4	2,569,700	±36.9
1982	6,320,000	±42.6	4,424,900	±30.4
1983	7,680,000	±40.3	5,042,100	±29.7
1984	5,600,000	±59.2	3,528,700	±54.2
1985	6,480,000	±32.6	4,708,200	±32.7
1986	5,920,000	±48.8	4,350,600	±50.0