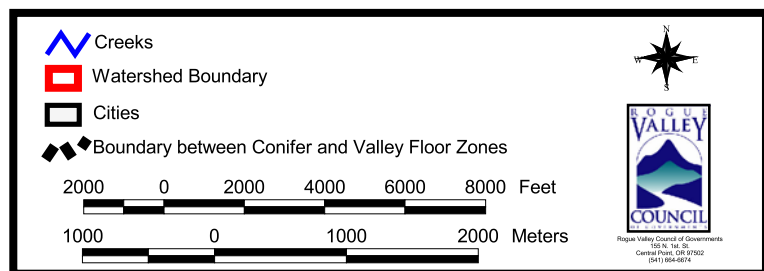


# SOIL MAP UNITS AND POTENTIAL NATIVE VEGETATION OF THE JACKSON CREEK SUB WATERSHED\*

## GENE HICKMAN

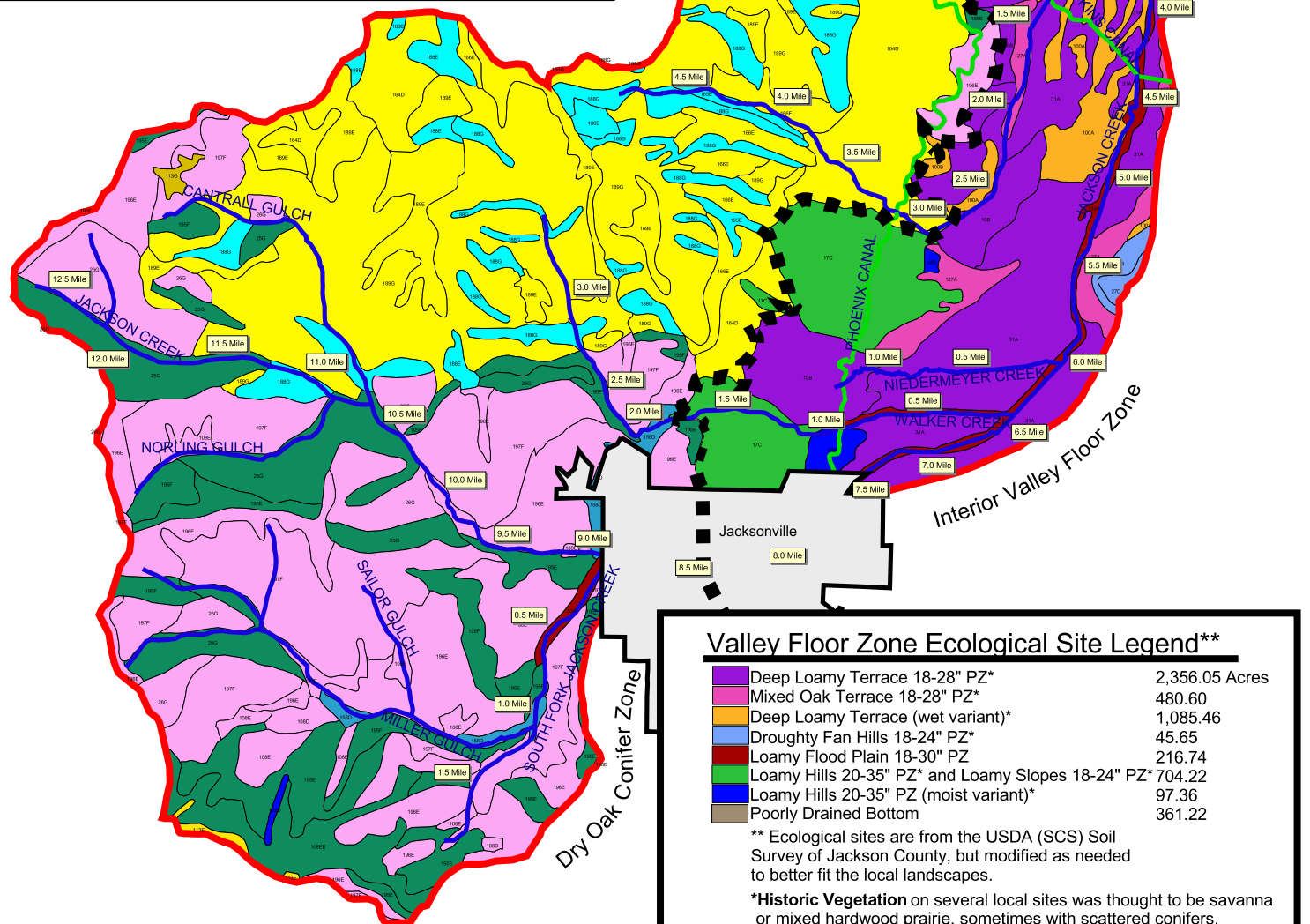
\*(Not necessarily historic vegetation.) (August, 2000)



### Upland Zone Ecological Site Legend\*

Douglas Fir Forest	1,768.79 Acres
Douglas Fir-Mixed Pine-Fescue Forest	947.73
Loamy Hills 20-35" PZ (moist variant)	7.98
Loamy Shrub Scabland 18-35" PZ	18.21
Loamy Slopes 18-24" PZ	11.00
Mixed Pine-Douglas Fir-Fescue Forest (granitic)	3,841.78
Pine-Douglas Fir-Fescue	3,549.24
Pine-Douglas-Fir-Fescue (deep fan/terrace variant)	87.82
Shallow Mtn. Slopes 22-30" PZ	15.69
Undescribed Upland Riparian Zone	26.44

\* Ecological sites are from the USDA (SCS) Soil Survey of Jackson County, but modified as needed to better fit the local landscapes.



### Valley Floor Zone Ecological Site Legend\*\*

Deep Loamy Terrace 18-28" PZ*	2,356.05 Acres
Mixed Oak Terrace 18-28" PZ*	480.60
Deep Loamy Terrace (wet variant)*	1,085.46
Droughty Fan Hills 18-24" PZ*	45.65
Loamy Flood Plain 18-30" PZ	216.74
Loamy Hills 20-35" PZ* and Loamy Slopes 18-24" PZ*	704.22
Loamy Hills 20-35" PZ (moist variant)*	97.36
Poorly Drained Bottom	361.22

\*\* Ecological sites are from the USDA (SCS) Soil Survey of Jackson County, but modified as needed to better fit the local landscapes.

\*Historic Vegetation on several local sites was thought to be savanna or mixed hardwood prairie, sometimes with scattered conifers.