

WARM SPRINGS INDIAN RES.

JEFFERSON COUNTY
LAKES & RESERVOIRS

OREGON STATE GAME COMMISSION

LEGEND

INCOMPLETE SITE

COMPLETE SITE

SCALE: 3/8 inch = 1 mile

DESCHUTES COUNTY LAKES & RESERVOIRS

OREGON STATE GAME COMMISSION

LEGEND

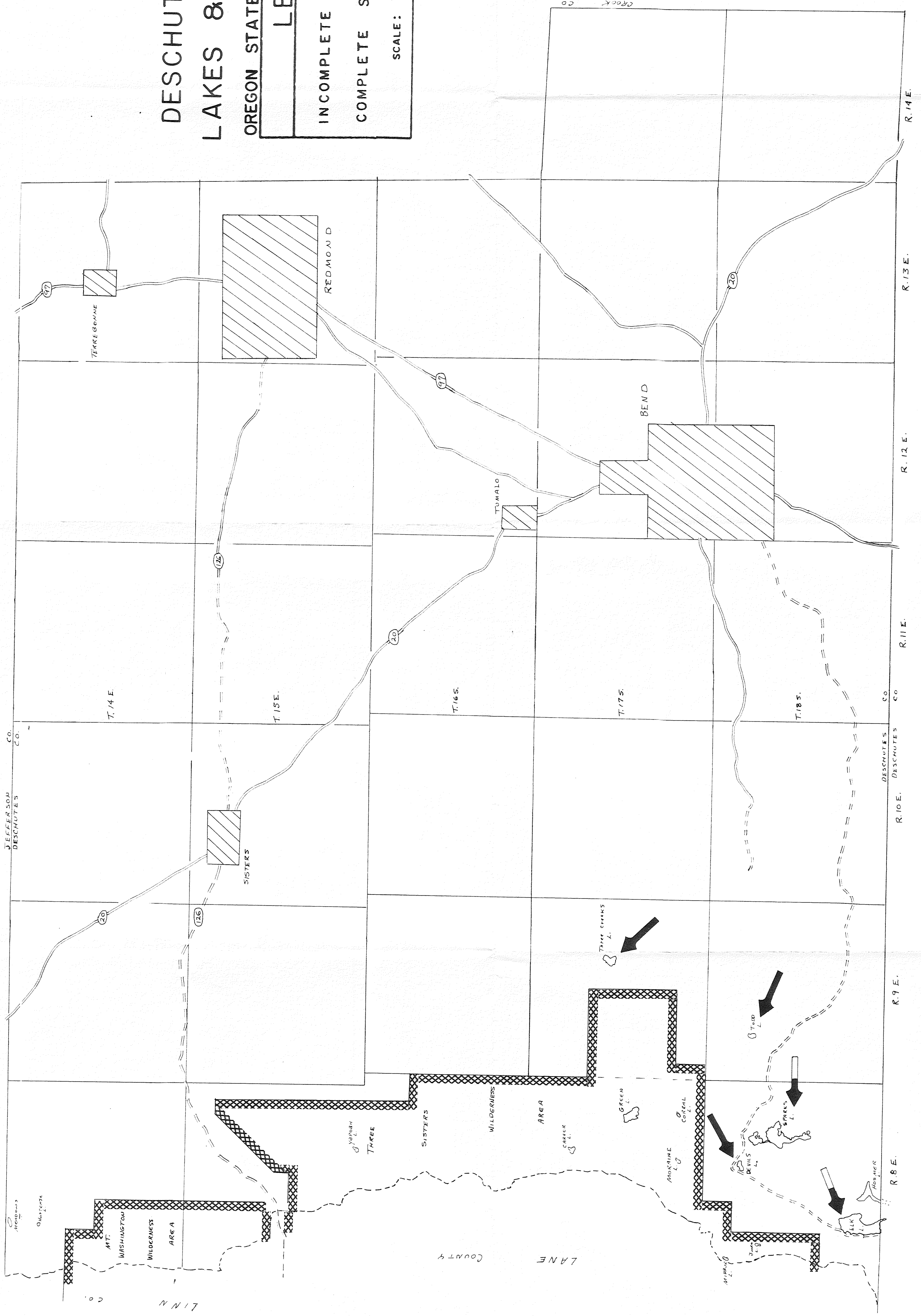
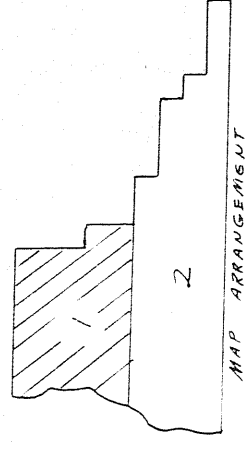
INCOMPLETE SITE

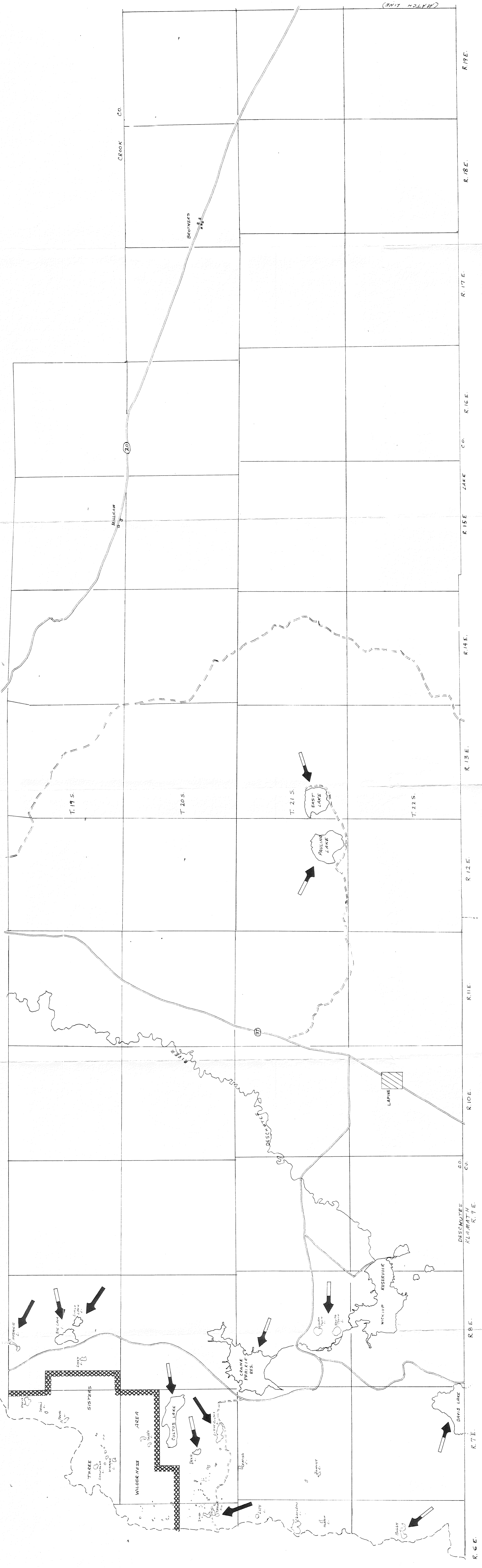


COMPLETE SITE



SCALE: $\frac{3}{8}$ inch = 1 mile





DESCHUTES COUNTY LAKES & RESERVOIRS

OREGON STATE GAME COMMISSION

LEGEND	
INCOMPLETE SITE	
COMPLETE SITE	
SCALE: 3/8 inch = 1 mile	

