

Mapped by U.S. Forest Service, Portland, Oregon
by Stereophotogrammetric methods.
Control by U.S.C. & G.S., U.S.G.S. and Forest Service.
Aerial photography by

Polyconic Projection, 1927 North American Datum

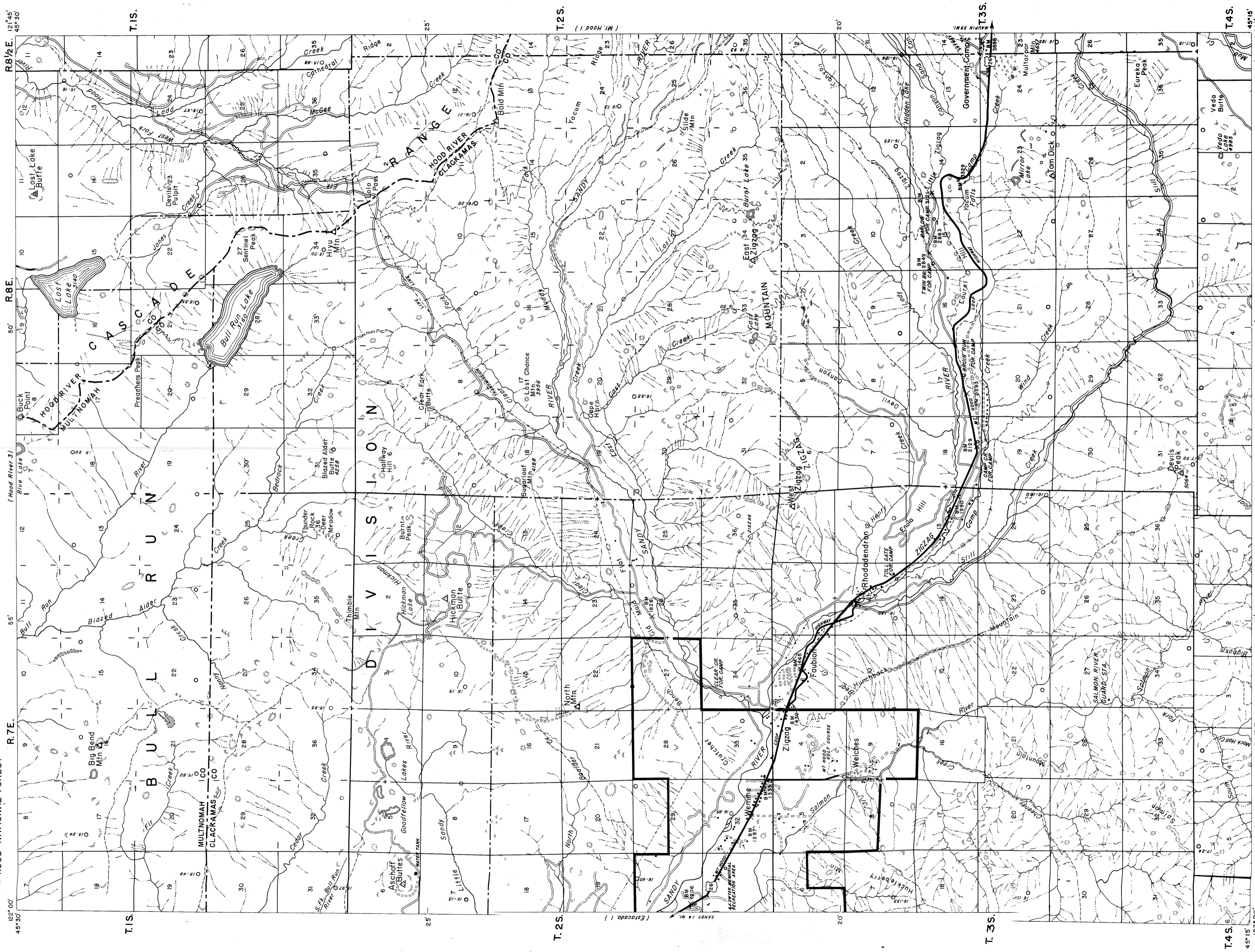
SCALE 1:31680

ROAD CLASSIFICATION
HARD-SURFACE ALL WEATHER ROADS DRY WEATHER ROADS
Heavy-duty Improved dirt
Medium-duty Unimproved dirt
U.S. Route State Route

MT JEFFERSON 3, OREGON

CORRECTED 1/30/57-ACM

264



Mapped by U.S. Forest Service, Portland, Oregon
by Stereo Photogrammetric methods.
Control by U.S.C. & G.S., U.S.G.S. and Forest Service.
Aerial photography by U.S. Forest Service

SCALE 1:31680
(Frazier Min)

ROAD CLASSIFICATION
HARD-SURFACE ALL WEATHER ROADS
DRY WEATHER ROADS
Heavy-duty
Medium-duty
Unimproved dirt
U.S. Route
State Route

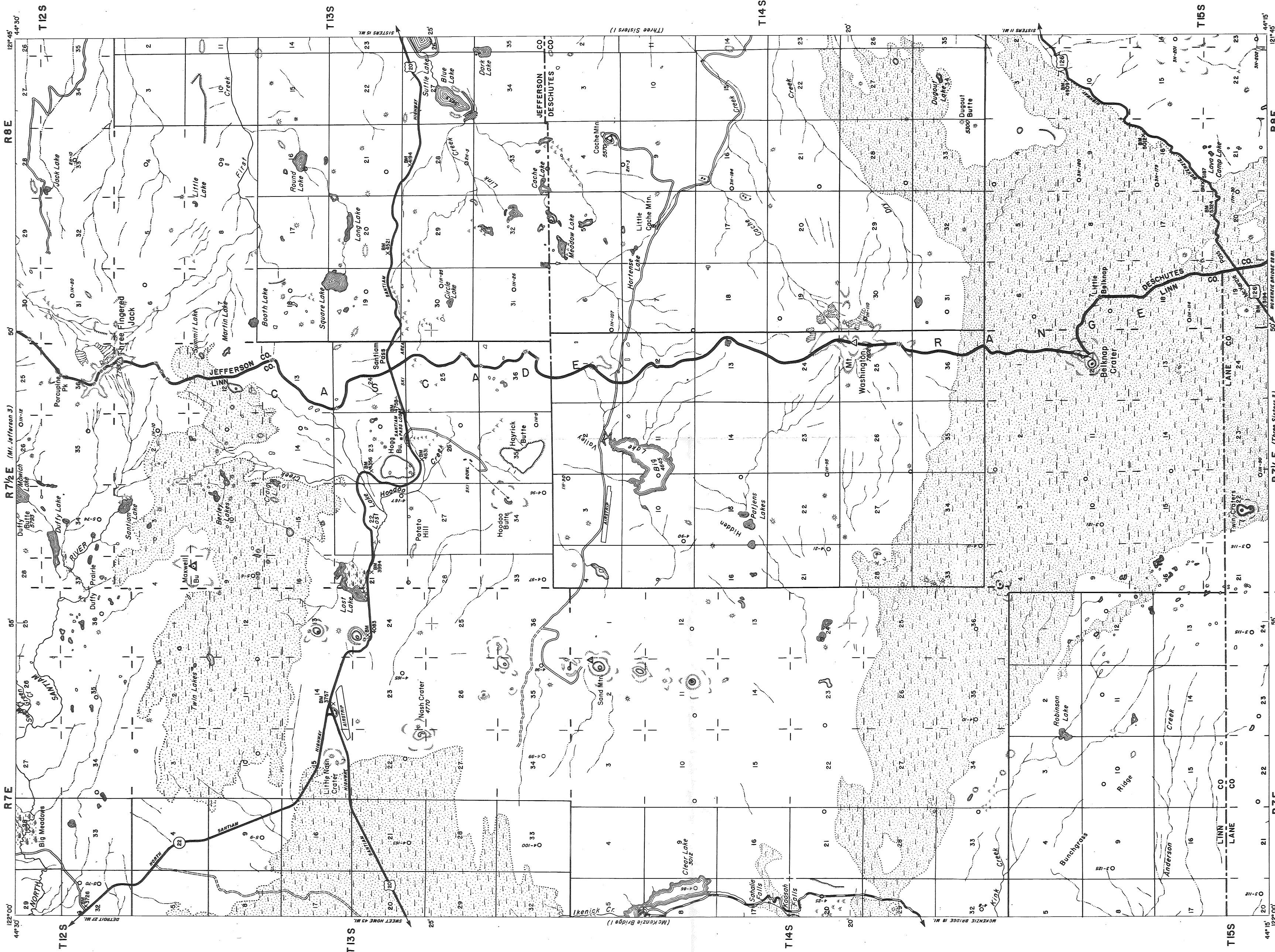
MT. HOOD 2, OREGON
203

Collected 1945/1946

Polyconic Projection, 1927 North American Datum.

U.S. DEPARTMENT OF AGRICULTURE
FOREST SERVICE
WILLAMETTE-DESCHUTES NATIONAL FORESTS

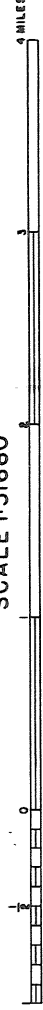
THREE SISTERS 2 QUADRANGLE
OREGON



Mapped by U.S. Forest Service, Portland, Oregon
by Stereophotogrammetric methods.
Control by U.S.C. & G.S., U.S.G.S. and Forest Service.
Aerial photography by

Polyconic Projection, 1927 North American Datum

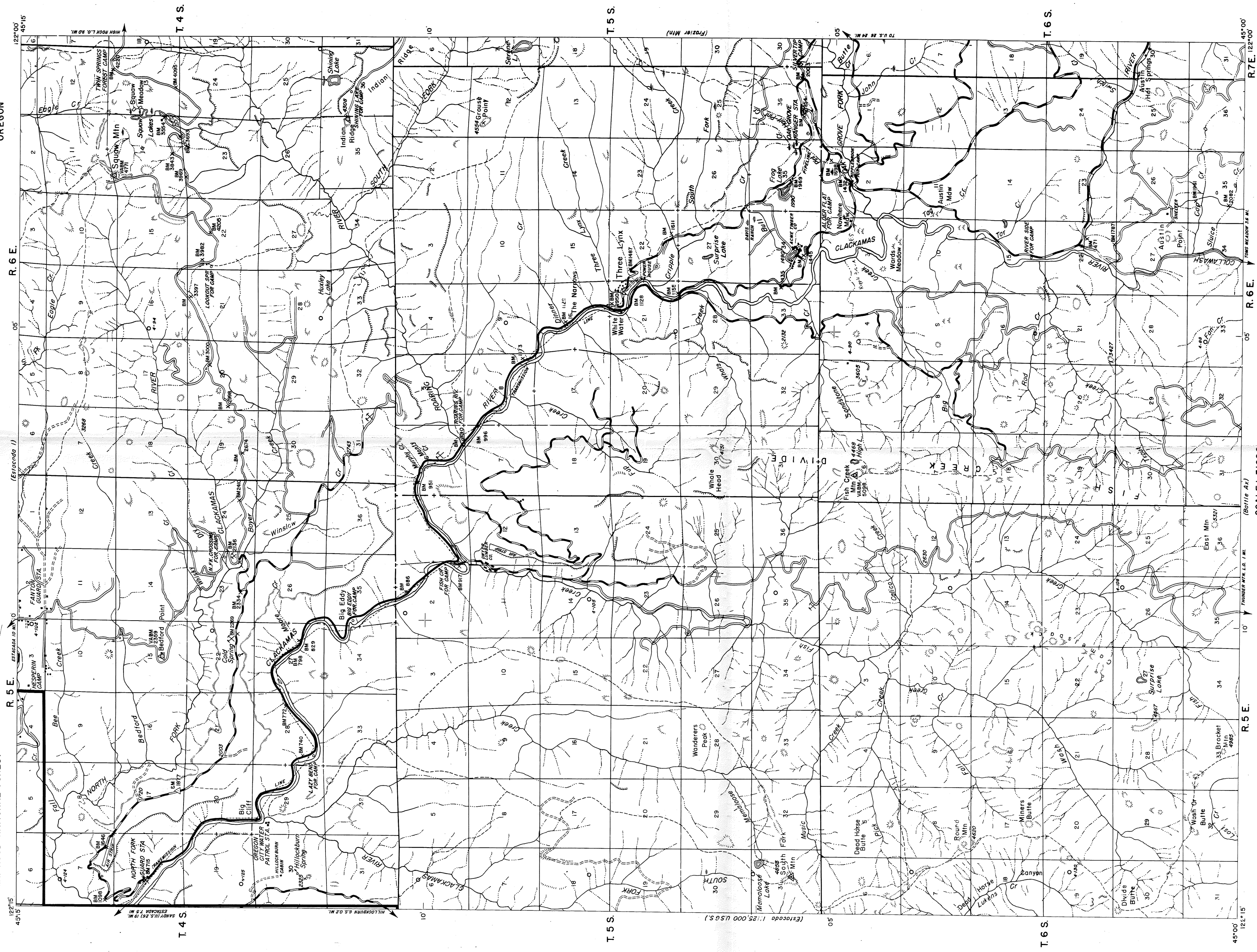
SCALE 1:31680



ADVANCE SHEET SUBJECT TO CORRECTION
AND FINAL PRINTING

ROAD CLASSIFICATION
 HARD SURFACE ALL WEATHER ROADS
 Heavy duty
 Medium duty
 U.S. Route
 DRY WEATHER ROADS
 Improved dirt
 Unimproved dirt
 State Route

THREE SISTERS 2, OREGON
301



Originally mapped as planning sheet
by Chiefs Office Conversion to
Planimetric map with revisions by R-6

Polyconic Projection, 1927 North American Datum

ROAD CLASSIFICATION
ROAD SURFACE ALL WEATHER ROADS
DRY WEATHER ROADS
Heavy-duty
Medium-duty
Improved dirt
Unimproved dirt
U.S. Route
State Route

FISH CREEK MTN., OREGON
214

This sheet has been compared with U.S.G. Find good. 4/12/17

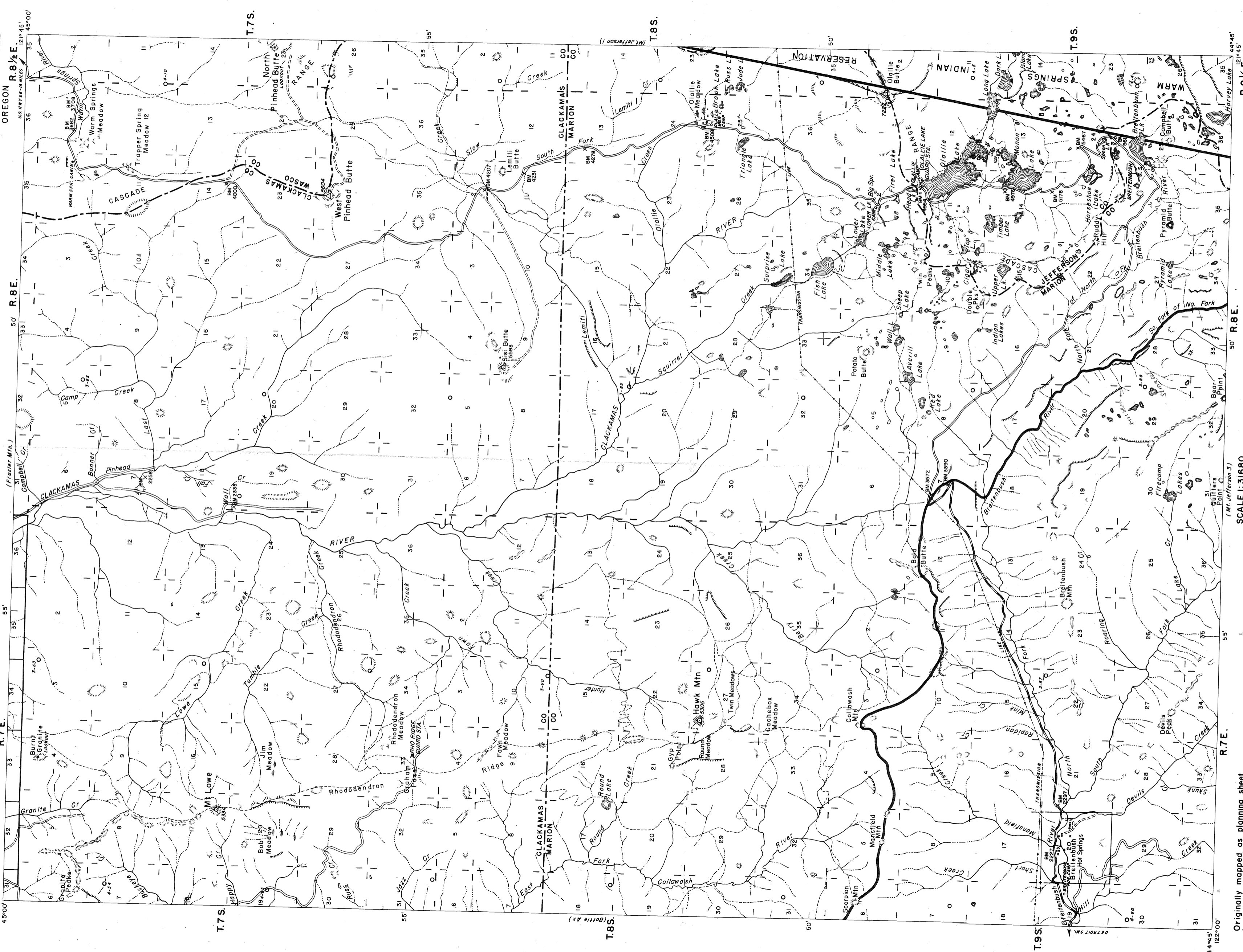
U.S. DEPARTMENT OF AGRICULTURE
FOREST SERVICE

MT. HOOD - WILLAMETTE NATIONAL FORESTS

R. 7 E.

R. 8 E.

OLALLIE QUADRANGLE
OREGON R. 8 1/2 E.



SCALE 1:31680

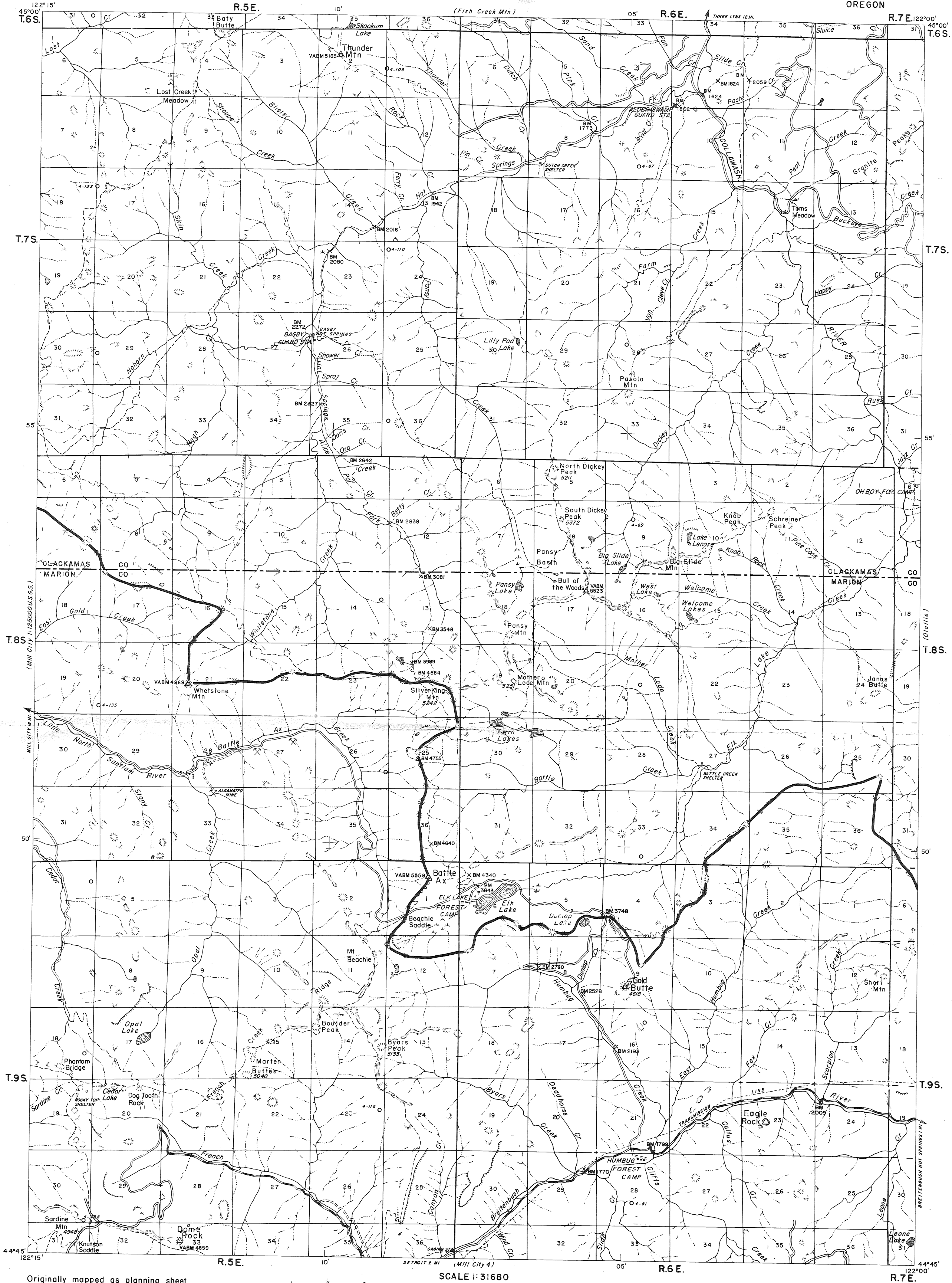
ROAD CLASSIFICATION
 HARD-SURFACE ALL WEATHER ROADS DRY WEATHER ROADS
 Heavy-duty Improved dirt
 Medium-duty Unimproved dirt
 U.S. Route State Route

Originally mapped as planning sheet
by Chiefs Office. Conversion to
Planimetric map with revisions by R-6

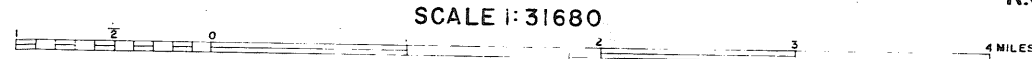
Polyconic Projection, 1927 North American Datum

OLALLIE, OREGON
251

Conserved Slopes, etc.



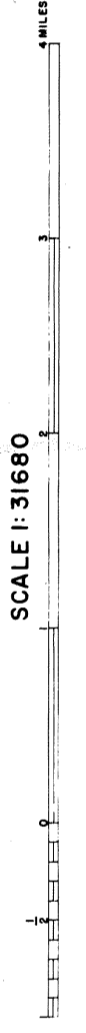
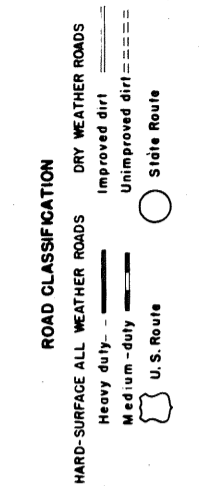
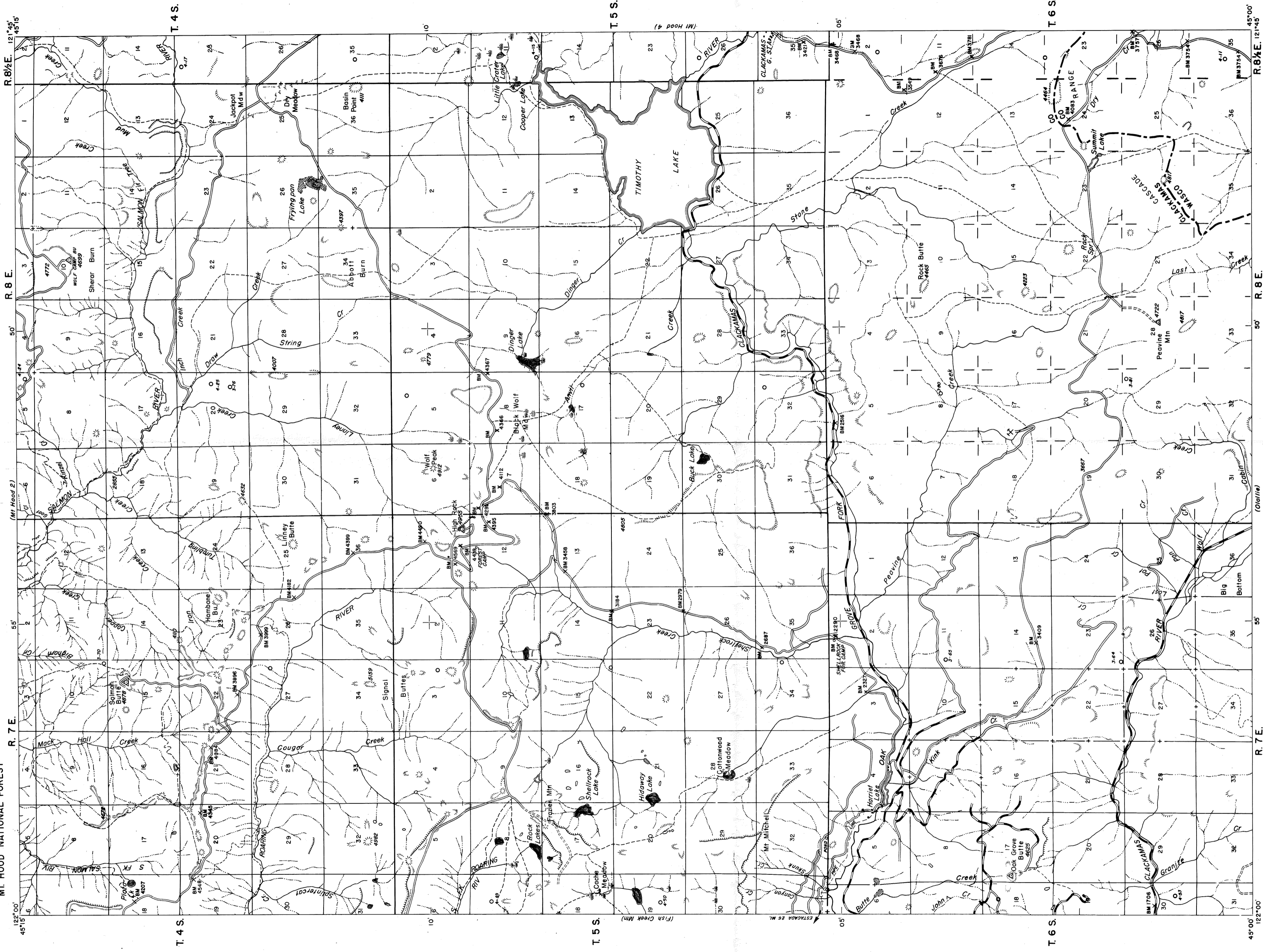
Originally mapped as planning sheet
 by Chiefs Office. Conversion to
 Planimetric map with revisions by R-6



ROAD CLASSIFICATION

HARD SURFACE ALL WEATHER ROADS	DRY WEATHER ROADS
Heavy-duty	Improved dirt
Medium-duty	Unimproved dirt
U.S. Route	State Route

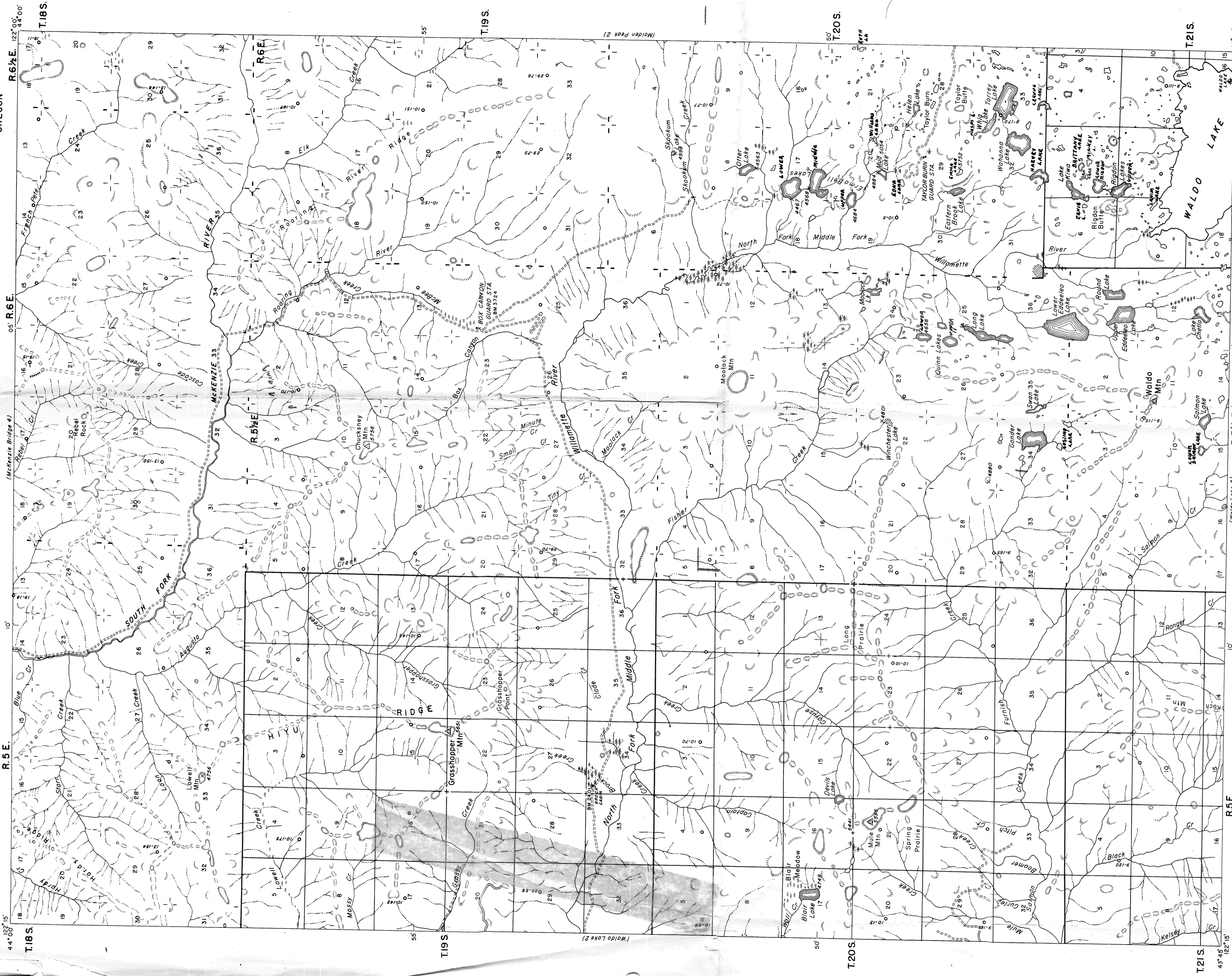
Polyconic Projection, 1927 North American Datum



Originally mapped as planning sheet
by Chiefs Office. Conversion to
Planimetric map with revisions by R-6

Polyconic Projection, 1927 North American Datum

Original 2-6-55



Mapped by U.S. Forest Service, Portland, Oregon
by Stereophotogrammetric methods.
Control by U.S.C. & G.S., U.S.G.S. and Forest Service.
Aerial photography by U.S. Forest Service

Polygonic Projection, 1927 North American Datum

SCALE 1:31680
ADVANCE SHEET SUBJECT TO CORRECTION
AND FINAL PRINTING

4 MILES

ROAD CLASSIFICATION
HARD SURFACE ALL WEATHER ROADS
HEAVY-DUTY
MEDIUM-DUTY
IMPROVED DIRT
UNIMPROVED DIRT
U.S. Route
State Route
DRY WEATHER ROADS
IMPROVED DIRT
UNIMPROVED DIRT
U.S. Route
State Route

WALDO LAKE I, OREGON
ADVANCE EDITION OF